



# Pennine

No. 112

Winter 1994



---

Huddersfield Canal Society Ltd., 239 Mossley Road, Ashton-under-Lyne, Lancs., OL6 6LN.  
Tel: 061 339 1332 Fax: 061 343 2262

---

<i>Chairman</i>	David Sumner	4 Whiteoak Close, Marple, Stockport, Cheshire, SK6 6NT. Tel: 0161 449 9084
<i>Vice-Chairman and Working Party Co-ordinator</i>	Trevor Ellis	20 Batley Avenue, Marsh, Huddersfield, HD1 4NA. Tel: 01484 534666
<i>Treasurer</i>	John Sully	5 Primley Park Road, Leeds, West Yorkshire, LS17 7HR. Tel: 01132 685600
<i>Company Secretary</i>	John Fryer	c/o Ramsdens Solicitors, Ramsden Street, Huddersfield, HD1 2TH.
<i>West Side Chairman</i>	Jack Carr	19 Sycamore Avenue, Euxton, Chorley, Lancashire., PR7 6JR. Tel: 01252 765786
<i>East Side Chairman</i>	Gordon Calverley	Frieldhurst House, Cornholme, Todmorden, OL14 8JL. Tel: 01706 812409
<i>Chairman, HCS Restoration Ltd.</i>	Keith Gibson	27 Penistone Road, New Mill, Huddersfield, West Yorkshire, HD7 7JP. Tel: 01484 681245
<i>Festivals Officer</i>	Brian Minor	45 Gorton Street, Peel Green, Eccles, Manchester, M30 7LZ. Tel: 0161 789 4867
<i>Press Officer</i>	Alec Ramsden	16 Edgemoor Road, Honley, Huddersfield, West Yorkshire, HD7 2HP. Tel: 01484 662246
<i>Sales Officer</i>	Gay Quilter	12 Shaw Hall Close, Greenfield, Oldham, Lancashire, OL3 7PG. Tel: 01457 872526
<i>Editor</i>	Alwyn Ogborn	92 Lane Head Road, Lees, Oldham, Lancashire, OL4 5RT. Tel: 0161 624 0736
<i>Membership Secretary</i>	Josephine Young	Huddersfield Canal Society, 239 Mossley Road, Ashton-u-Lyne, Lancs., OL6 6LN. Tel: 0161 339 1332
	David Finnis	The Kettle, 1 Booth, Greenbottom, Slaithwaite, Huddersfield, West Yorkshire, HD7 5XB.
	Robert Maycock	9 Warwick Close, Shaw, Oldham, Lancashire, OL2 7DZ
	Ken Wright	Bridge House, Dobcross, Oldham, Lancashire, OL3 5NL. Tel: 01457 873599
	Allen Brett	31 Woodlands Road, Milnrow, Rochdale, Lancashire, OL16 4EY. Tel: 01706 41203

#### NON-COUNCIL POSTS

<i>Managing Director HCS Restoration Ltd</i>	Stephen Whitby	239 Mossley Road, Ashton-u-Lyne, Lancs., OL6 6LN. Tel: 0161 339 1332
<i>General Secretary</i>	Frank Smith	Huddersfield Canal Society, address as above
<i>Consultant</i>	Mike Thompson	32 The Balk, Walton, Wakefield, WF2 6JU. Tel: 01924 250919

---

Council Members..... Inside Front  
 Editorial..... 3  
 Then & Now - Stanley Square, Stalybridge..... 4-5  
 Then & Now - Bayley Street Bridge..... 6-7  
 Then & Now - Staley Wharf..... 8-9  
 Then & Now - Egmont Street, Mossley..... 10-11  
 Then & Now - Lock 11W..... 12-13  
 Then & Now - Wellihole Road Bridge..... 14-15  
 Then & Now - Dobcrass New Road..... 16-17  
 Then & Now - Pound above Lock 25E..... 18-19  
 Then & Now - Lock 29E..... Centre Pages  
 Then & Now - Pound above Lock 28E..... 28-29

Then & Now - Lock 27E..... 30-31  
 Then & Now - Pound above Lock 17E..... 32-33  
 WRG & Benji Nostalgia..... 34  
 Canal Crossword - 8..... 35  
 The Wife's Tale - Part 25..... 36-37  
 Canalside Walking Holidays..... 38  
 Water Watch Guidelines..... 39  
 Canal & Riverboat Article..... 40  
 Letters..... 41  
 Exhibition of Paintings..... 42  
 New Members..... Inside Back  
 Social Programme & Back Issues..... Back Cover

Front Cover: Reconnected at last! The removal of the causeway near the junction of the Huddersfield Narrow and Broad canals re-establishes the link between the Narrow and the waterways network. Photo: R.Gough



Hi folks! Pictures, pictures, pictures in this Issue. Then and now. Yesterday and today. Before and after. Call it what you will, but over the last few years the change of scene along the canal corridor has changed dramattically.

I would think that many, probably most of you, do not have the chance to view the progress of restoration along the whole length of the canal. Indeed, members who are not local to the canal at some point may rely entirely on the waterways press for information. Therefore I have put together some pictures of scenes illustrating the achievements of restoration. The pictures run from West to East and their locations can be pin-pointed on the restoration maps in the Autumn issue (111). Of course, due to space limitations, these are only a small sample of before and after photographs.

On page 38 we have given a free plug to a holiday company, Towpath Treks. Maybe they

will reciprocate by organising a walking holiday taking in 'our' canal. That would give everyone the opportunity to view the spectacular progress.

Did you see the National Lottery draw Saturday 11th March? I didn't because there was no television where I was, but our Chairman, David Sumner, did the draw at Huddersfield University, which is right next to Lock 1E. A superb piece of publicity and a nice little cash input to the cause. Well done David!

The Mersey Basin Campaign are getting to grips with the problems of misuse of waterside environments by the publication of three booklets of guidelines, see page 39. Let us hope that they do the trick and improve waterside situations everwhere, for far too long canals and rivers have been dumping grounds for all sorts of rubbish.

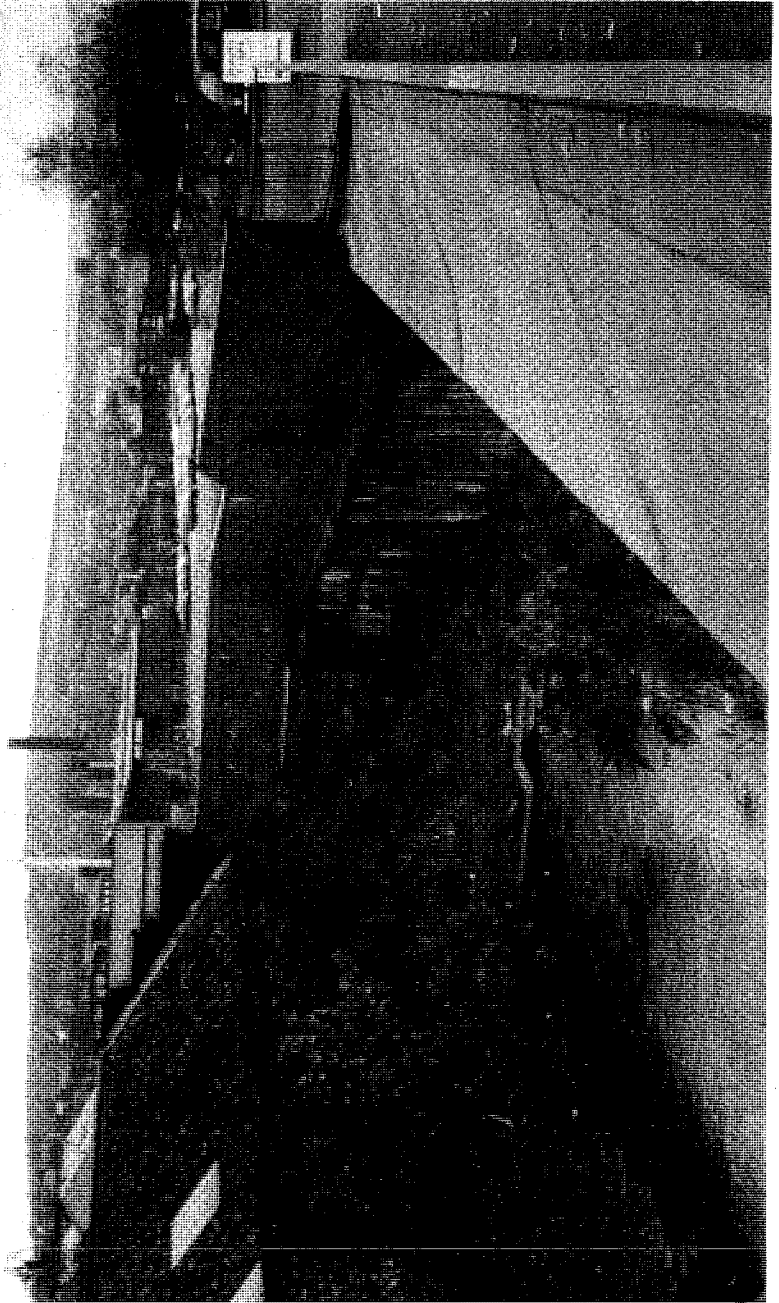
Not much more to say about this issue. More news of funding bids and restoration progress in the next issue.

Alwyn Ogborn

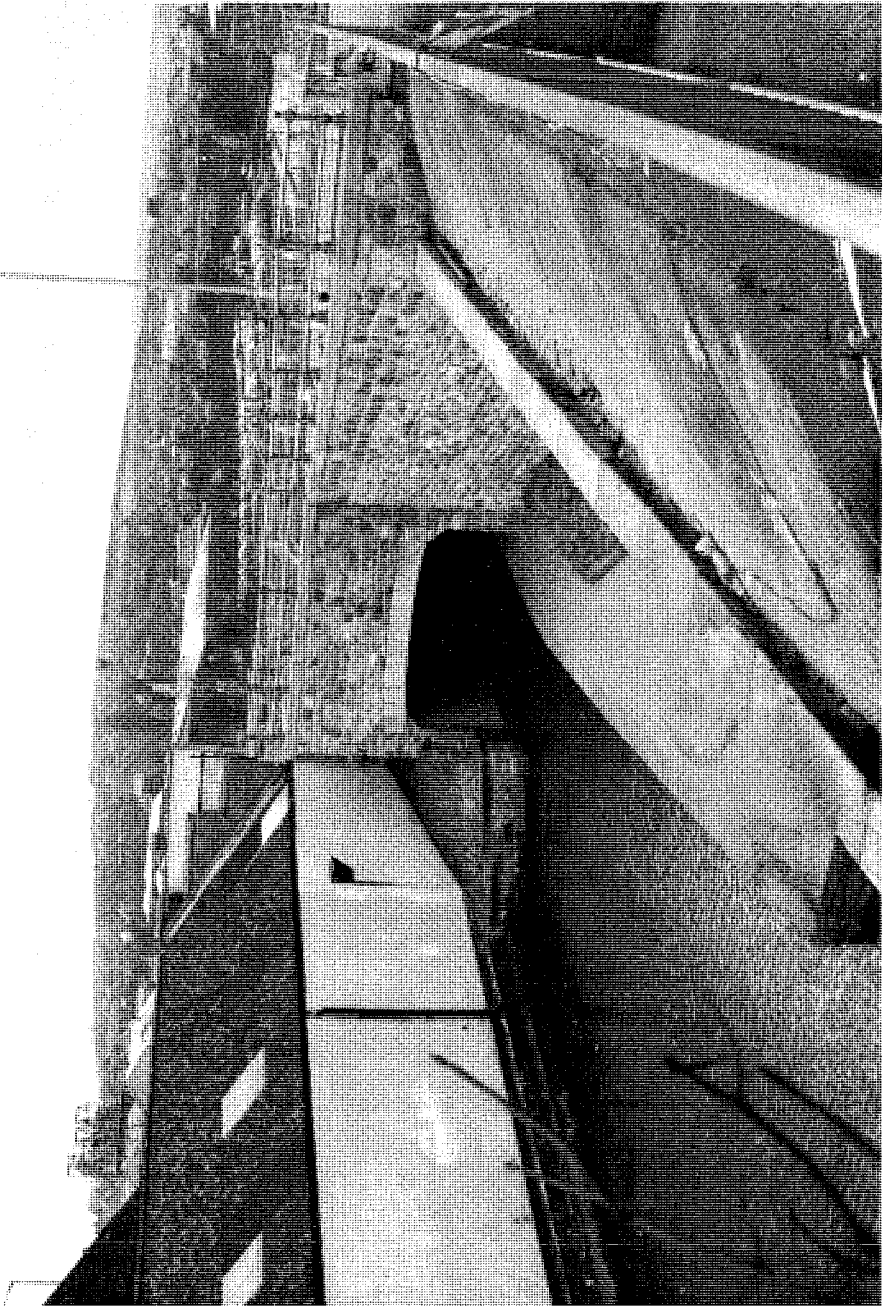
*PS Our apologies for the tardiness of this issue, mind you, perhaps a Winter edition is not so out of place!*

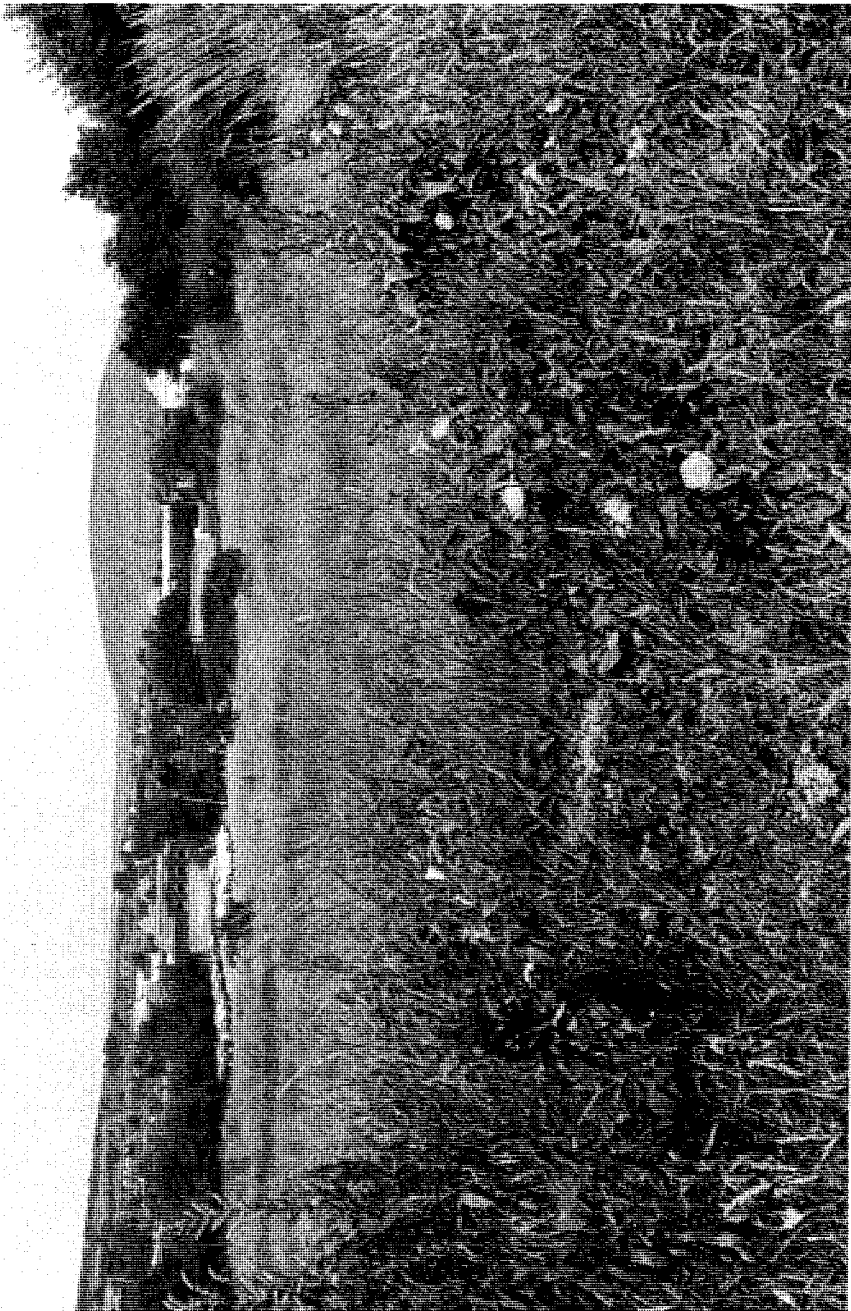






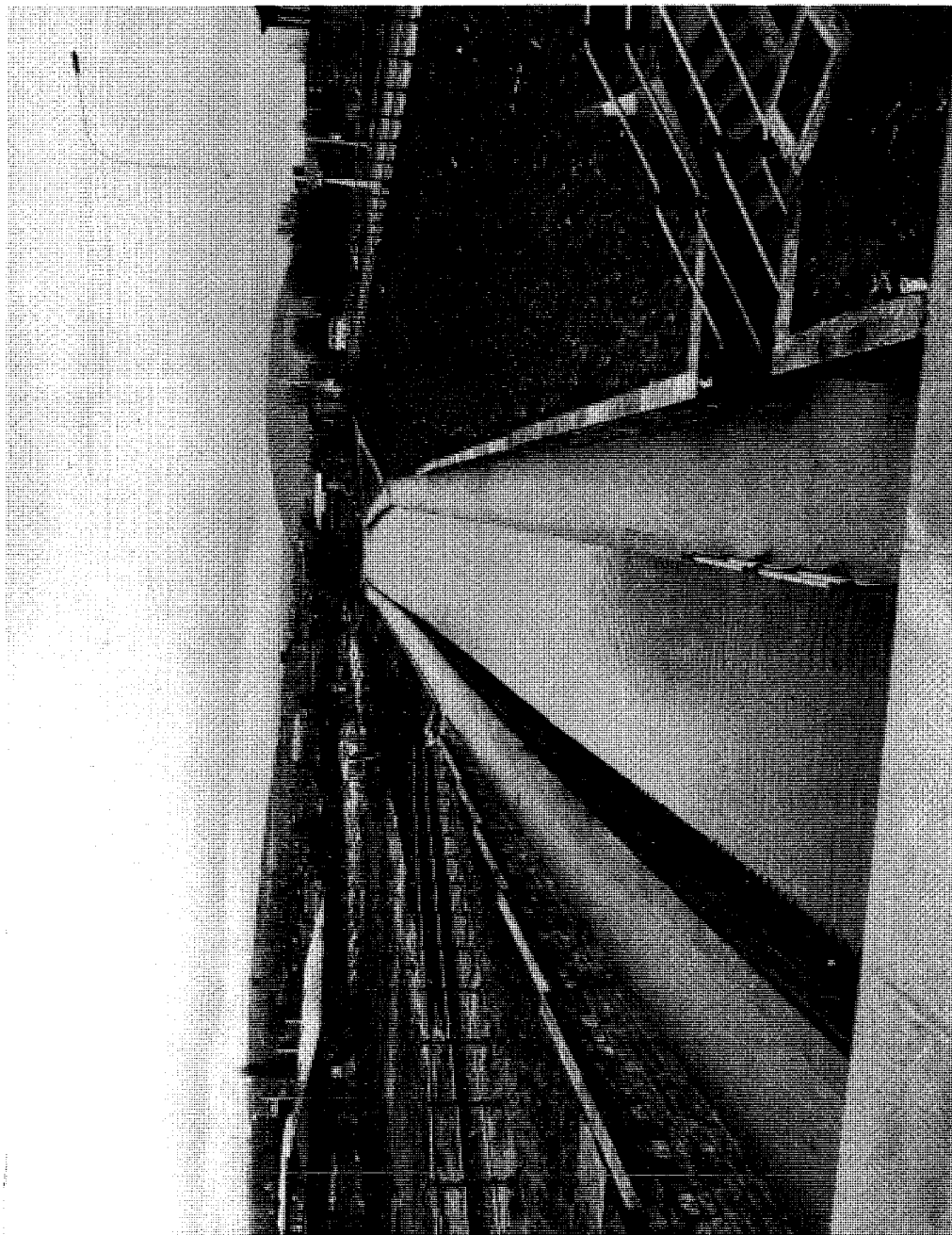
Then & Now ... Bayley Street bridge, Stalybridge, looking towards the town centre.  
Restored in 1994. Photos: R. Dewey & R. Gough





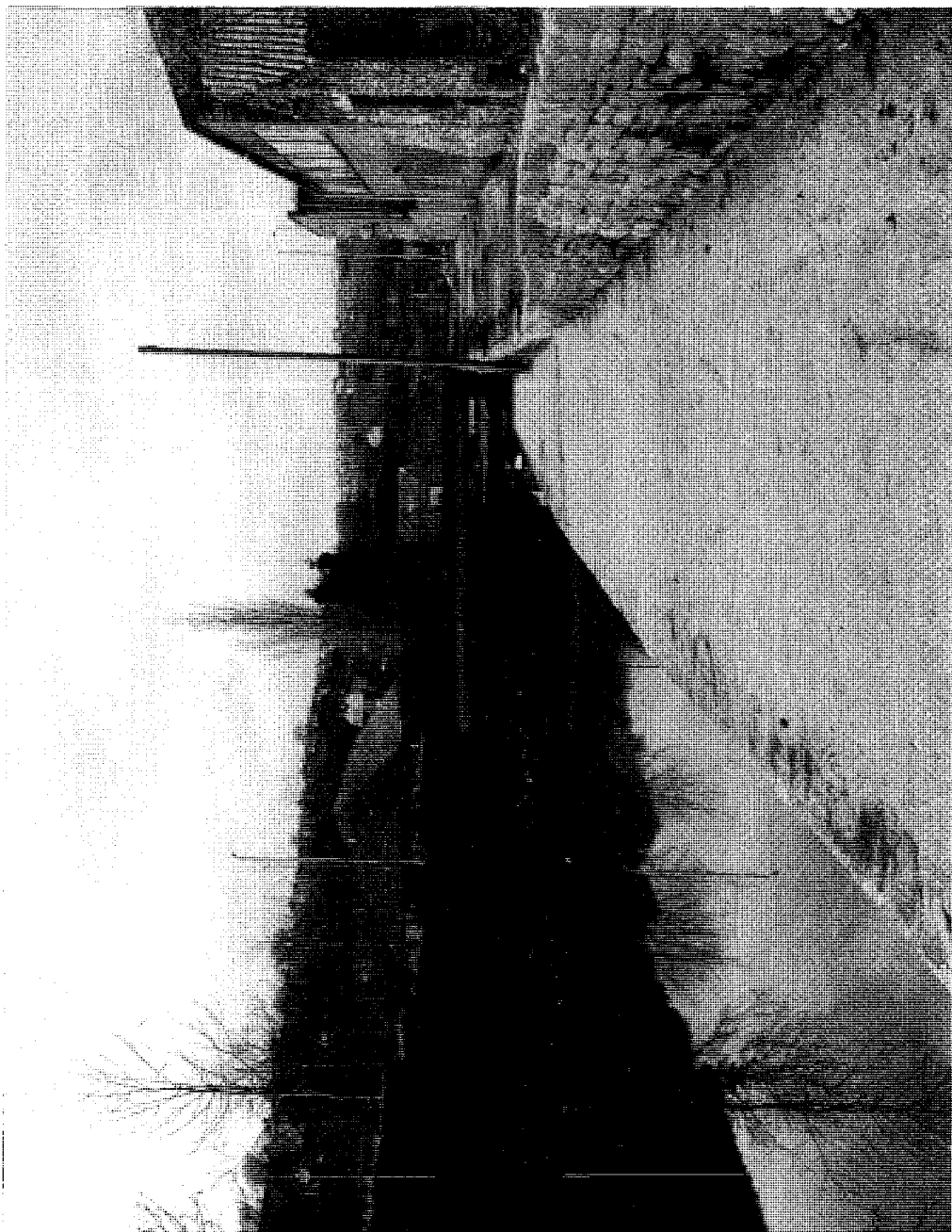


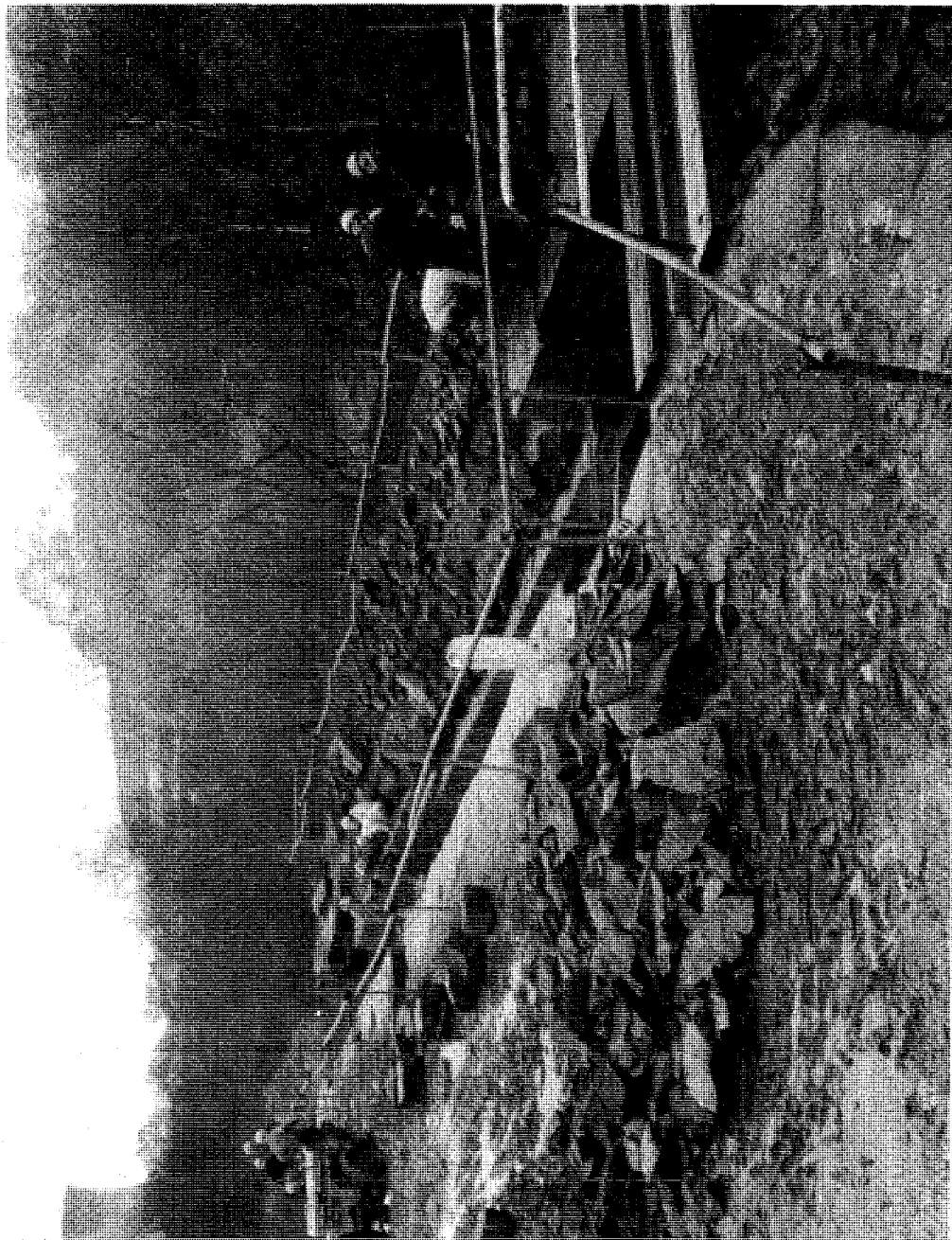
Then & Now ... 'Staley Wharf' - The canal beyond Bayley Street bridge, looking towards Stalybridge town centre. Restored in 1994/5. Photos: R. Gough

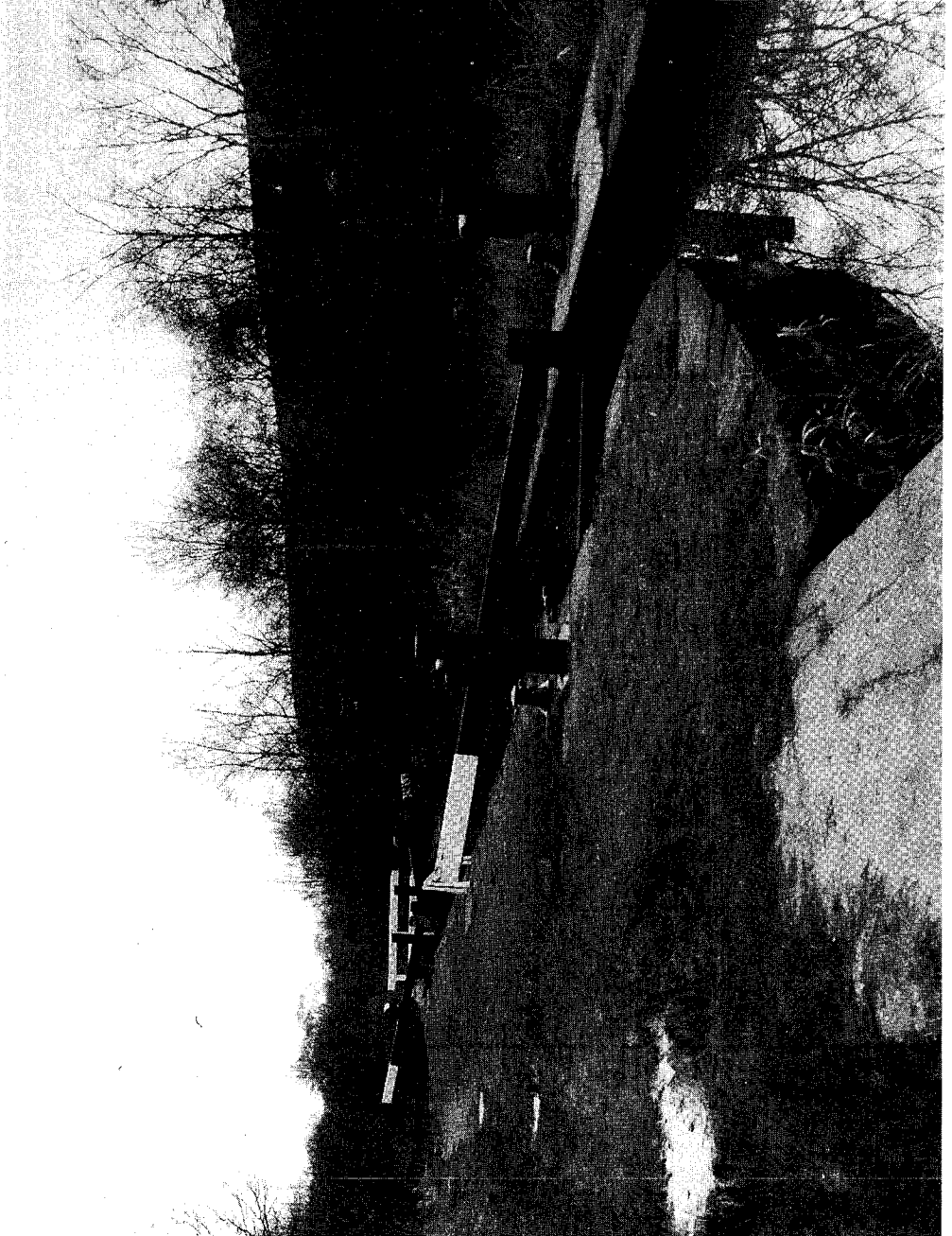


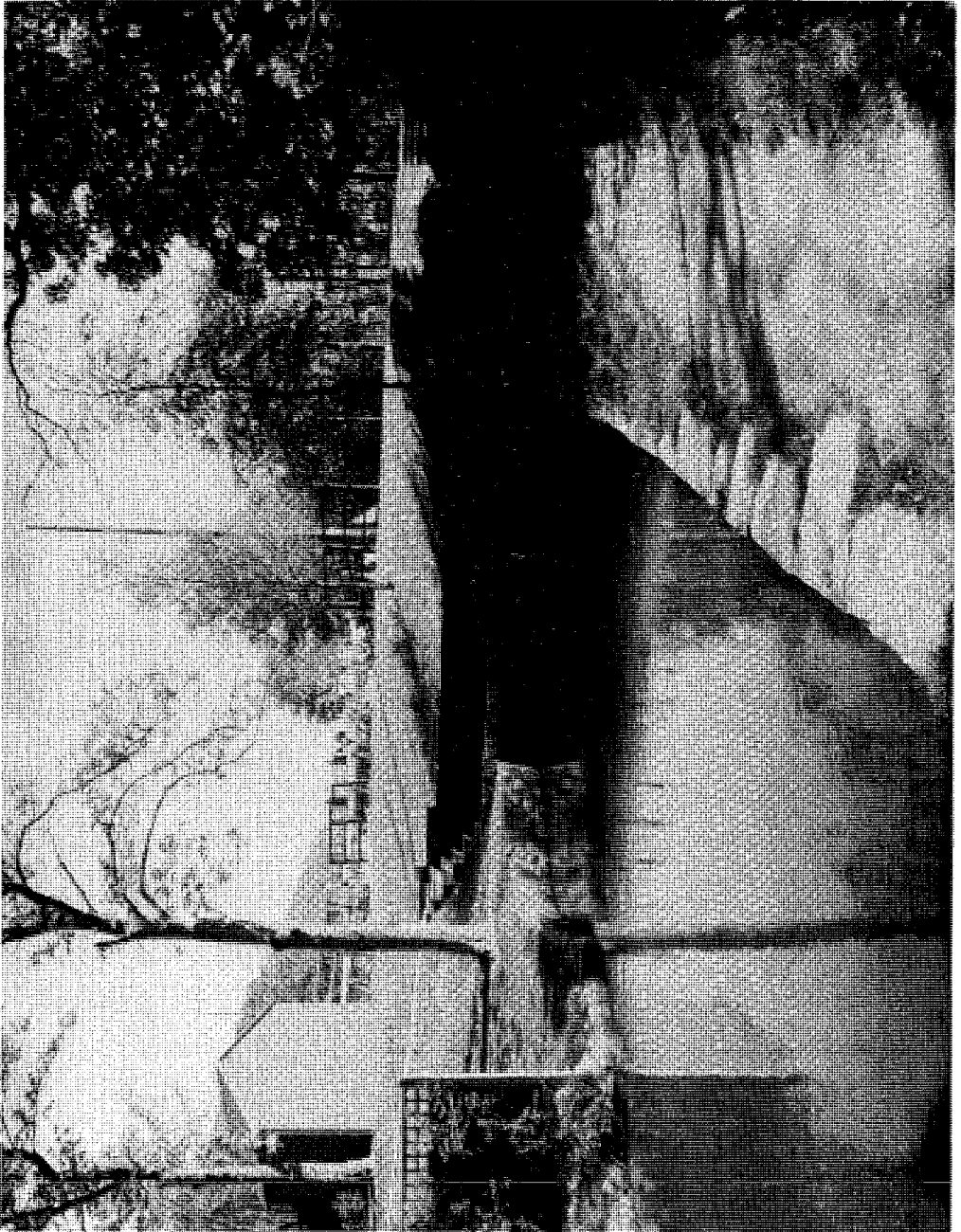


Then & Now ... The canal at Egmont Street, Mossley, looking towards Waggon Road.  
Dredging & towpath works in 1993/4. Photos: A. Ogborn & R. Gough



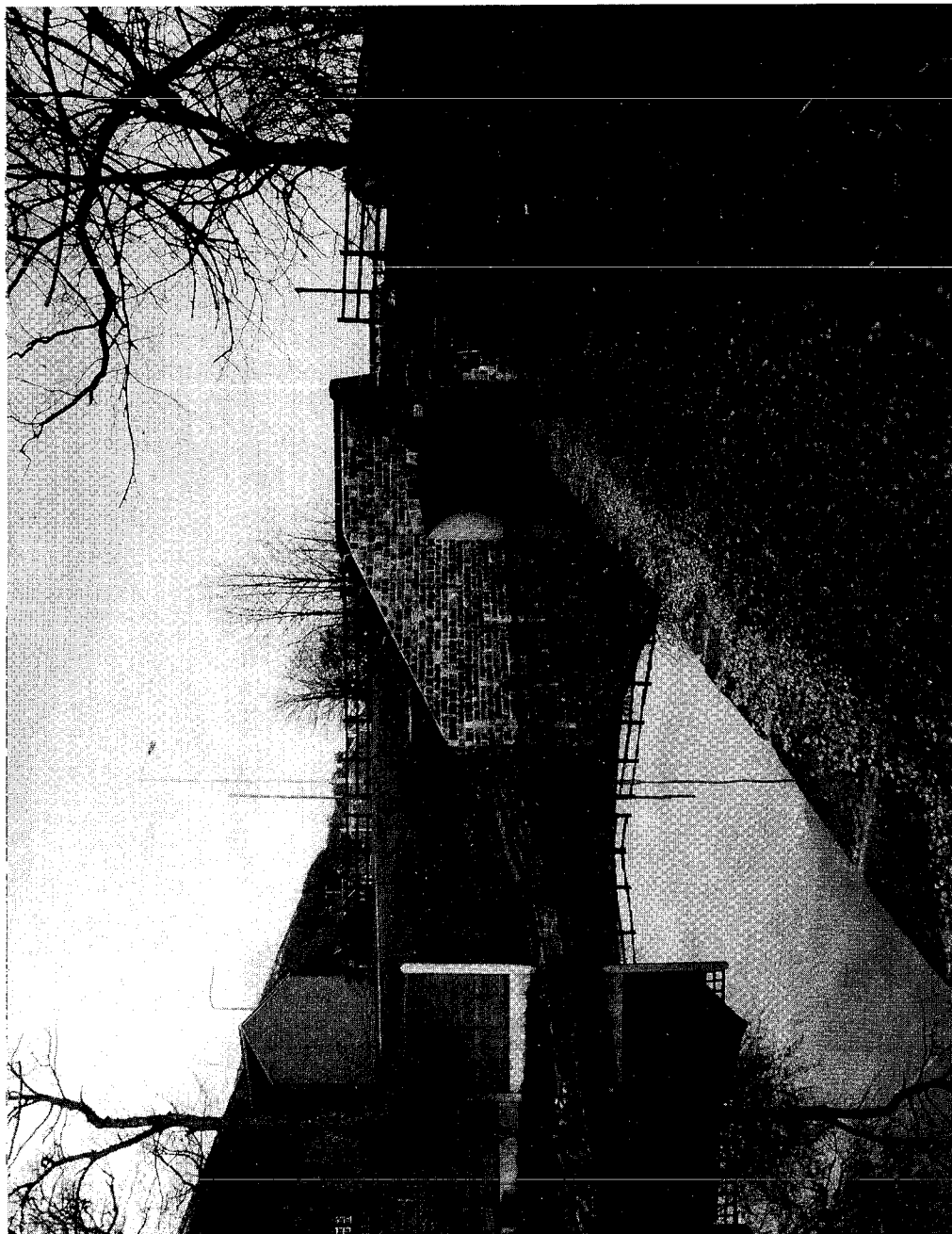


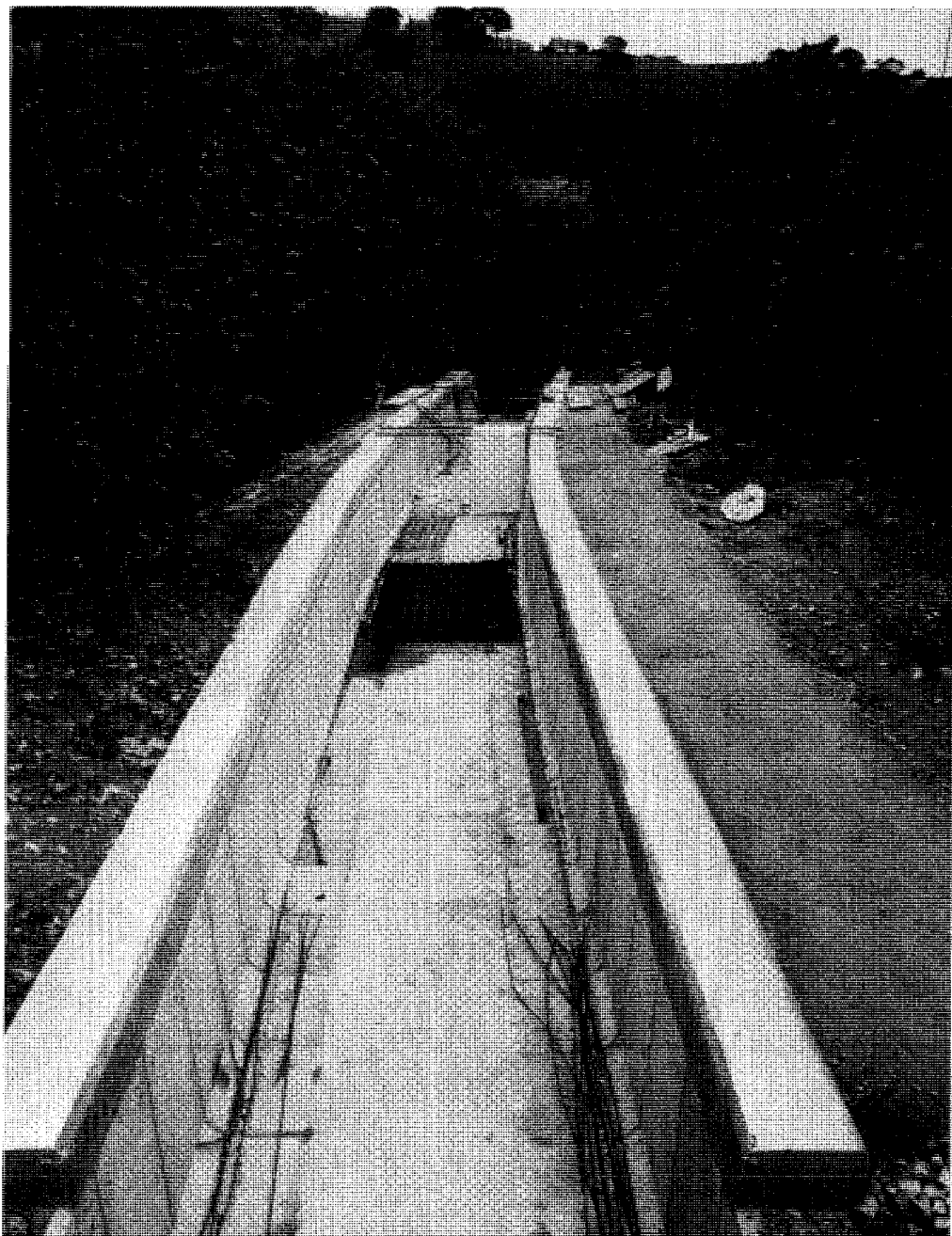






Then & Now ... Wellihole Road bridge looking towards Greenfield.  
Restored in 1994. Photos: R. Gough

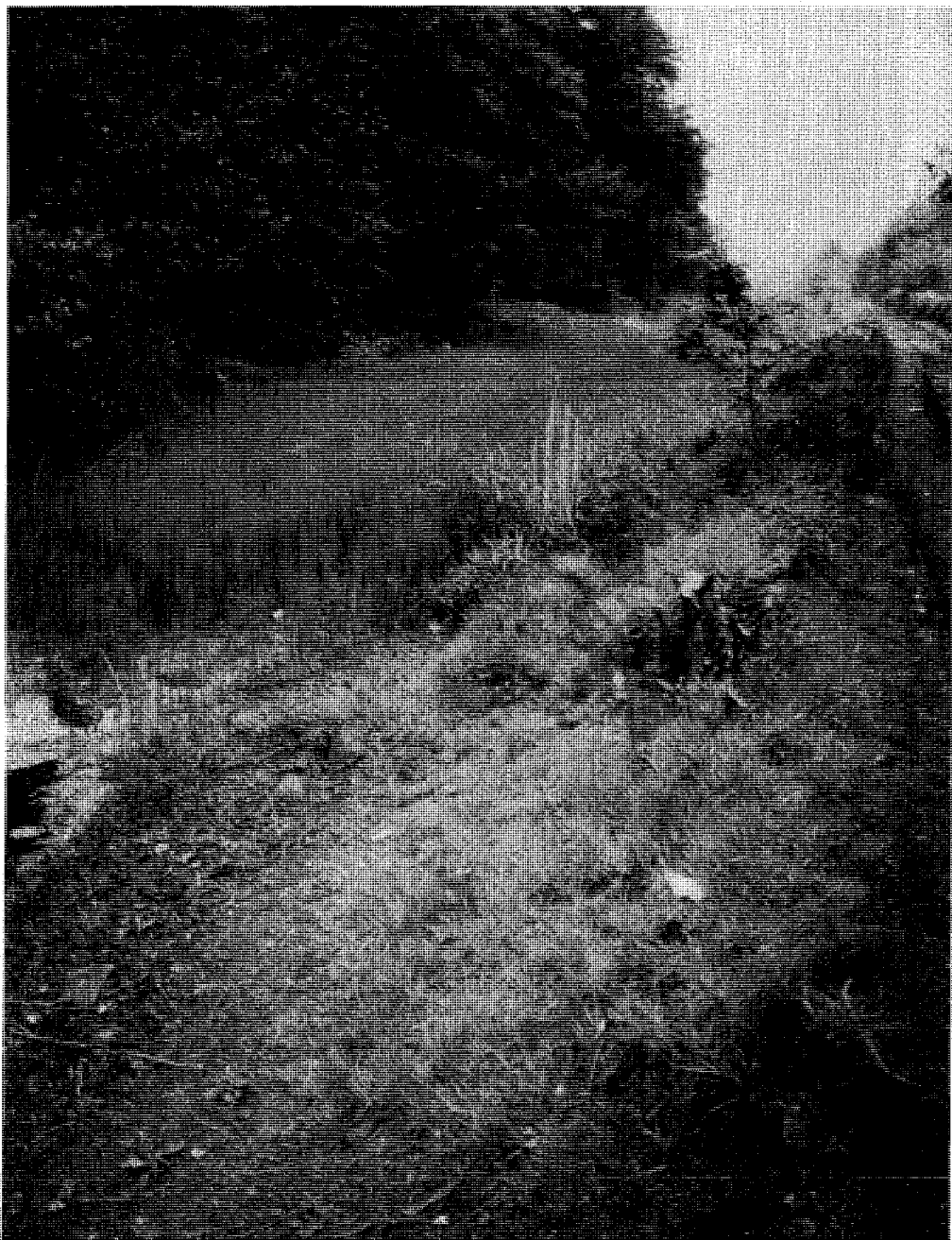




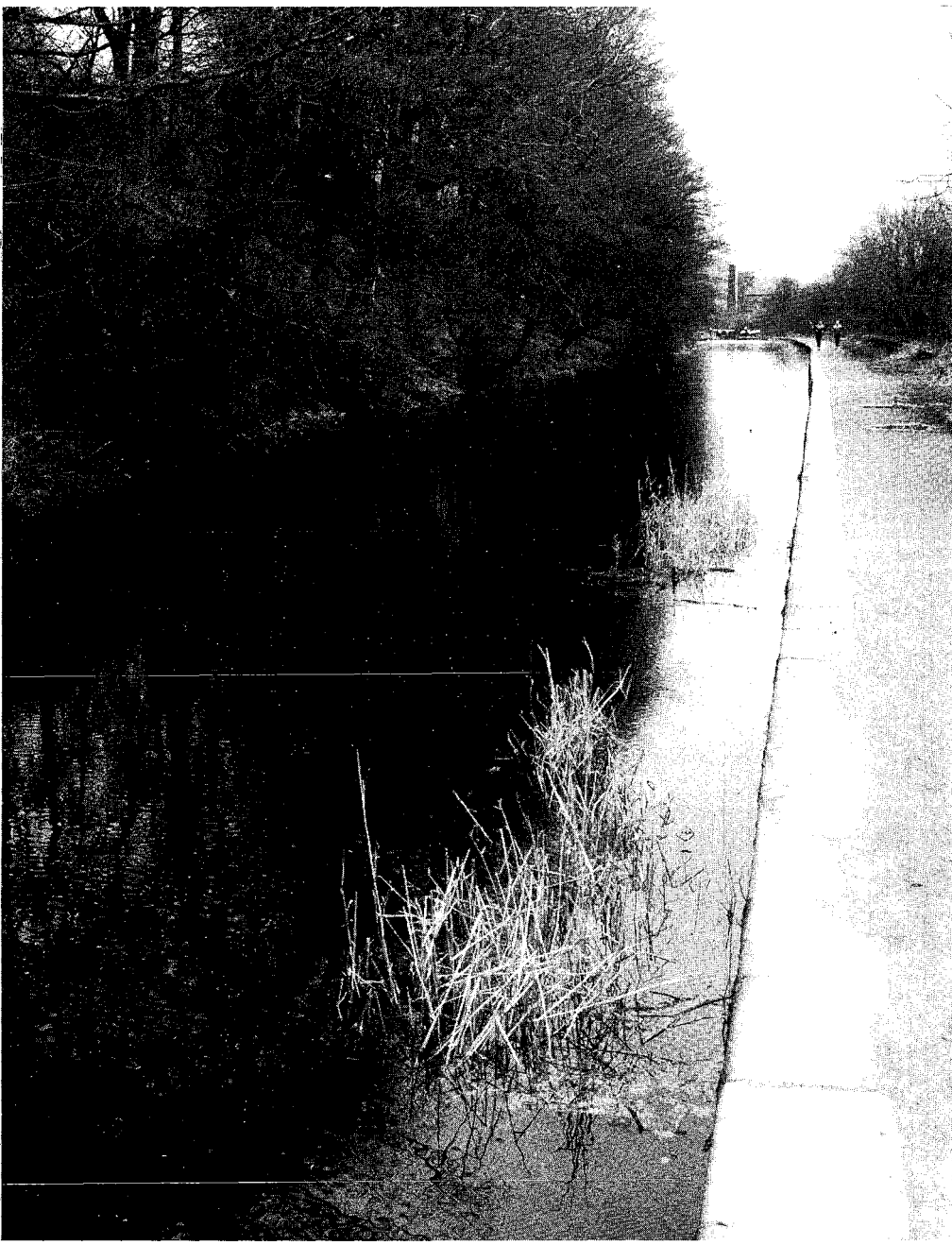


Then & Now ... Canal relining at Dobcross New Road looking towards Wool Road Basin.  
Completed in 1987. Photos: A. Ogborn & R. Gough

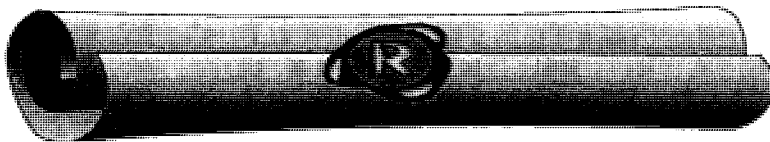




Then & Now ... The long pound above Lock 25E with Upper Mills, Slaithwaite in the distance.  
Dredging and towpath works in mid 1980's. Photos: A. Ogborn & R. Gough



*To All Canal Society Members:*



*Don't Let Your Estate Drift into Intestacy...*

***MAKE A WILL!***

*and chart a course to the destination of your choice*

**RAMSDENS**

Your Society's Solicitors offer Society Members and their spouses/  
partners a Will or Wills for a limited period at a competitive price of  
£30.00 (Single) or £50.00 (Spouse/Partner)

*Please Contact Mr Vernon H Sykes  
on Huddersfield (01484) 545311*

Ramsden Street  
Huddersfield HD1 2TH

## ACCOMMODATION?



No problem at Globe Farm!



We have Bed & Breakfast (with en-suite facilities)  
Self Catering Bunkhouse for 24 people with Showers and Drying Room  
Camping ●●● All at very reasonable rates

Contact: *Jean Mayall, Globe Farm, Huddersfield Road, Delph, Nr. Oldham*  
*For details, Telephone: 01457 873040 • Member H.C.S.*  
*Meals available*

## TOP LOCK MARINE



M.D. & A.M. Allcard

### THE FOUR SEASONS RESTAURANT BOAT

Enjoy a cruise on board our traditionally styled narrow boat as we serve you with our home cooked meals

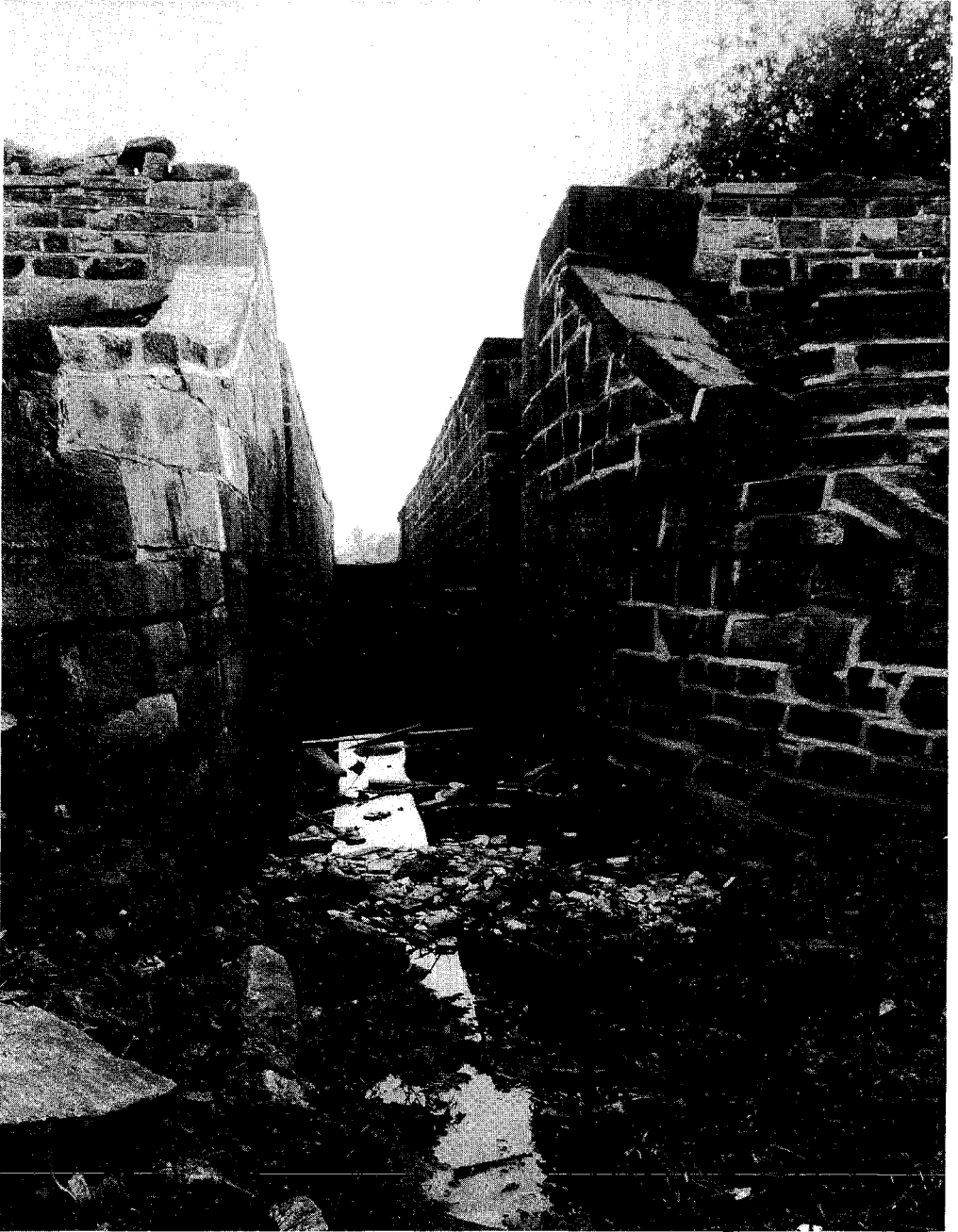
---

### SUMMER SPRITE

Have a day out on our self-steer day boat, fully equipped with galley and toilet. Boat handling instruction is given.

---

Top Lock House, 5 Lime Kiln Lane, Marple, Stockport, SK6 6BX Tel: 0161 427 5712



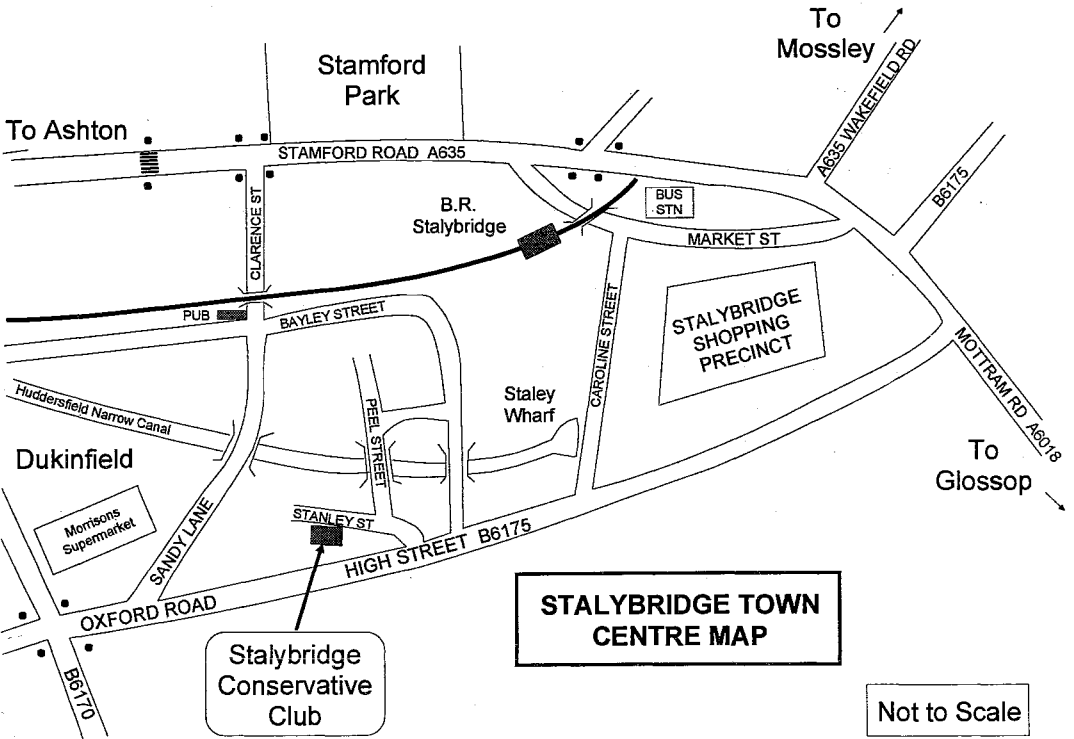
# ANNUAL GENERAL MEETING

It's that time of year folks, when we hope to see as many of you as possible attend the A.G.M. For many, the distance is too great and we appreciate the fact, but I would ask you all to participate by returning the attached reply/proxy form. If nothing else, it will give us an indication of buffet numbers. As usual, we will request those attending to make a contribution on the day towards the cost of the buffet.

After lunch we hope to give a guided tour around the new Staley Wharf and possibly a boat trip as well. This, however, depends on British Waterways completing repair works to the three locks in preparation for the official opening. We will try our best.

Frank Smith  
General Secretary

## HOW TO GET THERE ...



# HUDDERSFIELD CANAL SOCIETY LIMITED

## 1995 ANNUAL GENERAL MEETING

**NOTICE IS HEREBY GIVEN THAT THE FIFTEENTH ANNUAL GENERAL MEETING OF THE ABOVE NAMED COMPANY WILL BE HELD AT THE STALYBRIDGE CONSERVATIVE CLUB, STANLEY STREET, STALYBRIDGE, CHESHIRE, ON SUNDAY THE 11TH DAY OF JUNE 1995, AT 11.30 A.M.**

### **TO TRANSACT THE FOLLOWING BUSINESS:**

- A. To receive and adopt the Accounts for the Company for the year ending 31st December 1994 together with the report of the Council of Management and of the Auditors thereon.
- B. To re-elect Messrs Revell Ward of Huddersfield as Auditors and to authorise the Council of Management to fix their remuneration.
- C. To re-elect Mr A J Brett as a Member of the Council of Management retiring by rotation.
- D. To re-elect Mr A P Ogborn as a Member of the Council of Management retiring by rotation.
- E. To re-elect Mr J M Sully as a Member of the Council of Management retiring by rotation.
- F. To re-elect Mrs J G Quilter as a Member of the Council of Management retiring by rotation.
- G. To re-elect Mr K Wright as a Member of the Council of Management retiring by rotation.
- H. To re-elect Mrs J A Young as a Member of the Council of Management retiring by rotation.
- I. To consider any other nominations.
- J. Any other business.
- K. That the membership fees be revised as follows:

Ordinary Membership	£9.00
Family Membership	£11.00
Life Membership	£90.00

DATED the 30th day of March 1995

By Order of the Council

**J. M. Fryer**

Company Secretary





**1995 ANNUAL GENERAL MEETING**

I/We\* will/will not\* be attending the 1995 Annual General Meeting.

If applicable - please insert the name(s) of those attending:

-----  
-----  
-----

Signed ----- \*Delete where applicable Date -----

**FORM OF PROXY**

A Member entitled to attend and vote at the Meeting is entitled to appoint a proxy to attend and vote on his/her behalf. A proxy must be a member of Huddersfield Canal Society Limited.

I/We -----  
of (Address) -----  
-----

in the County of -----

being a Member/Member\*s\* of the above named Society, hereby appoint

(Full Name) -----

of (Address) -----  
-----

as my/our\* proxy to vote for me/us\* on my/our\* behalf at the Annual General Meeting of the Society to be held on the 11th day of June 1995 and at any adjournment thereof.

Signed: ----- (\*Delete where applicable)

Name in Capitals: -----

Dated this ----- day of ----- 1995

PLEASE RETURN THE COMPLETED FORM TO:

General Secretary, Huddersfield Canal Society Limited, 239 Mossley Road, Ashton-u-Lyne, Lancs., OL6 6LN.

## **1995 FESTIVALS**

Members of the Huddersfield Canal Society are involved in numerous canal festivals this year - one more than last year - and can promise an exciting fun day out for all the family, whichever event you attend.

Based around the canal, you can enjoy brass bands, craft fairs, boat rides, children's entertainers, dancers and many others too numerous to mention.

### **May 6-8 - Uppermill**

Saddleworth Canal Festival

Blues & Folk nights - Friday & Saturday

### **May 27-29 - Linthwaite, Huddersfield**

National Trail Boat Festival

Folk & Jazz nights - Saturday & Sunday

### **June 24-25 - Tunnel End, Marsden**

Tunnel End Summer Fair

See the start of Britain's longest and highest canal tunnel.

### **July 7-9 - Ashton-under-Lyne**

Tameside Canals Festival

Biggest CAMRA beer tent in the North West

### **September 2-3 - Huddersfield University**

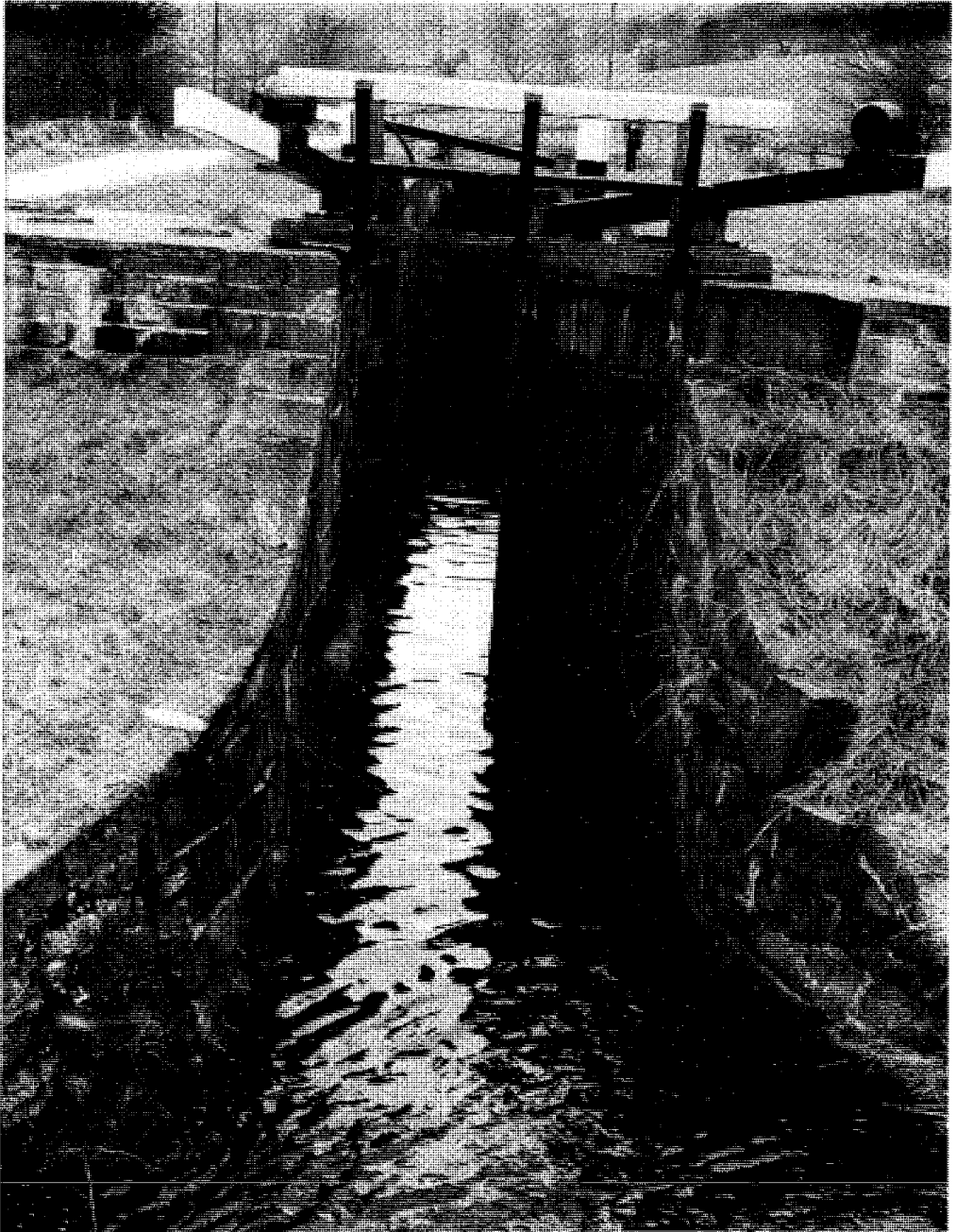
Huddersfield Canals Festival

For further details on these events,  
trade and boat booking forms, please contact:

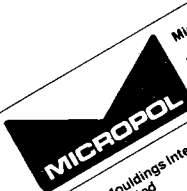
Frank Smith, Huddersfield Canal Society  
Tel: 0161 339 1332 Fax: 0161 343 2262

Festival Committees are always short of staff. Should you wish to volunteer your services to help in any capacity on any of the above dates - please call the office for details.

Then & Now ... Lock 29E at West Slaithwaite Road.  
Restored in mid 1980's. Photos: A. Ogborn & R. Gough



## ■ THE STAMFORD CONCEPT IN PROGRESSIVE BUSINESS ■



**Micropol**  
Manufacturers of specialist  
Thermoplastic compounds  
and Powders.



**Mouldings International  
Limited**  
Manufacturers of plastic  
injection moulded products.



**Mailbox Mouldings  
Limited**  
Manufacturers of plastic  
rotational moulded products.



**Stamford Profiles Limited**  
Manufacturers of Lignum  
extruded profiles

**Mailbox**  
Materials handling products  
by mail order



**OPTO**  
Intrio design, storefitting  
and conveyor systems

**Stamford Management  
Services Ltd.**  
Professional management  
services

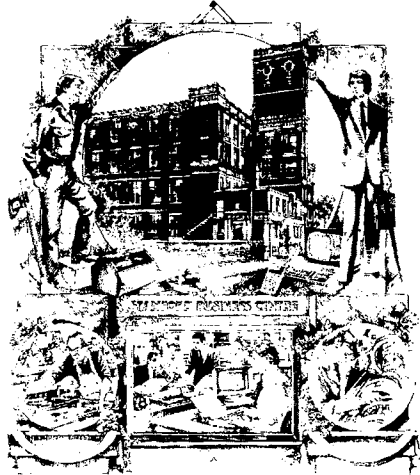


**Sudwos Carriers Limited**  
National hauliers and  
distributors.

*The  
Stamford  
Group*

The Stamford Group  
Limited  
Bayley Street,  
Stalybridge,  
Cheshire SK15 1QQ  
Telephone: 0161-330 6511  
Telefax: 0161-330 5576

## A UNIQUE OPPORTUNITY TO LEASE SUPERBLY REFURBISHED WORKSHOP UNITS



FROM 600 to 3,000 sq. ft.  
WITH COMPREHENSIVE  
BUSINESS SUPPORT FACILITIES.

Features include:

- Flexible Leasing arrangements.
- Management guidance and support.
- Administrative assistance
- Inhouse catering

For further details  
and colour brochure  
telephone

**Ray Dickson**  
**0161-330 6511**

Tower Mill, Park Road, Tameside, Cheshire SK16 5LN.



# YOU'LL BE IN GOOD COMPANY

# Shire Cruisers



The Wharf  
 Sowerby Bridge  
 West Yorkshire HX6 2AG  
 Tel: Halifax (01422) 832712

The secret may not last .....

Explore Yorkshire's secret waterways now, before the re-opening of the Huddersfield Canal unleashes the ravaging hordes from the Midlands. With us you can reach the parts other hire boats can't get to: York and Ripon (almost); the Derwent and the Pocklington, and we are still waiting for the first crew to take a hire boat onto the Market Weighton Canal! Then there's Sheffield and Keadby - and you could reach the end of the Rufford Branch with a fortnight .....

And now, of course, there are our two boats on the Rochdale - come and see how the competition are doing!

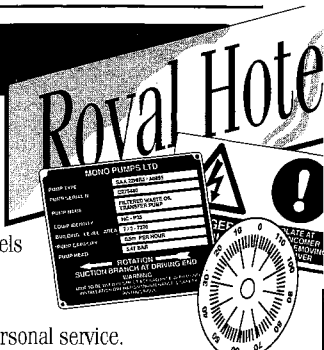
*YORKSHIRE'S LARGEST HIRE FLEET*

## Industrial Graphics

Mockridge Labels and Nameplates is an established market leader in the production of industrial graphic printing, including Photo Anodising, Chemical Etching, Machine Engraving, Profiling and Tooling-out.

From Graphic Membranes in Polyester to Stainless Steel Control Panels and Brass Signs, We can provide quality branding to identify and promote your products, plus design and technical advice.

Highly Trained specialist staff working as a team, but giving you a personal service.



**mockridge**  
 LABELS & NAMEPLATES LTD.  
 Cavendish St, Ashton-u-Lyne, Lancs. OL6 7QL.

Tel: 0161 308 2331  
 Fax: 0161 343 1958

## THE STATION

WARRINGTON ST., ASHTON 330 6776

What could be more pleasant than a fine Lunch, a superb pint & good company in our Conservatory or in the garden if its fine?

**WE'RE OPEN ALL AFTERNOON**

Hand-pumped Real Ales -

**BODDINGTONS · MARSTONS plus GUEST BEERS**

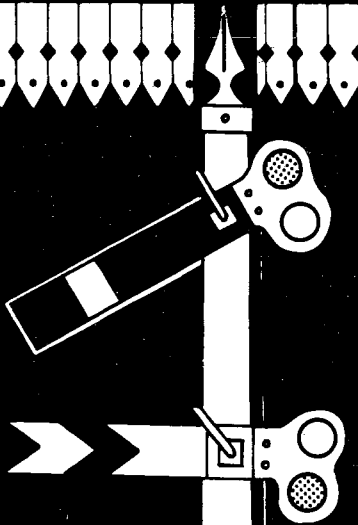
**Monday Night is FOLK NIGHT**



The Conservatory is bookable for parties up to two dozen, larger groups, up to 65, may book

Ask for Menus.

**ASHTON'S PREMIER FREEHOUSE**



**ONLY A SHORT WALK FROM THE HUDDERSFIELD NARROW!**

**Visiting the Tameside Canals Festival  
7/8/9 July 1995 ?**

**Why not stay at Tameside's finest hotel**

RAC  
\*\*\*

*York House Hotel*

4 CROWNS  
Highly  
Commended

(Only 2 minutes from the Festival site at Portland Basin, Ashton-under-Lyne.)

**A fantastic weekend for canal enthusiasts  
and all fun loving people:**

- Enjoy the entire Festival (including the biggest CAMRA beer tent in the North West!)
- View the progress of restoration work on the Huddersfield Narrow Canal
- Soak up the luxury of the York House, where all rooms have en-suite facilities, colour T.V with free satellite channels, and tea & coffee making facilities
- Dine in our 'Seasons' Restaurant, which is highly renowned for its superb menu and excellent service

**only £84.95 per person**

**Includes dinner, bed & breakfast accommodation for Friday and Saturday nights (7th & 8th July), a Weekend Pass to the Festival, plus a ticket to both the Folk and Jazz Concerts!**

(No Supplement for Single Rooms, but £5.00 per night extra for Twin/Double for Single Occupancy)

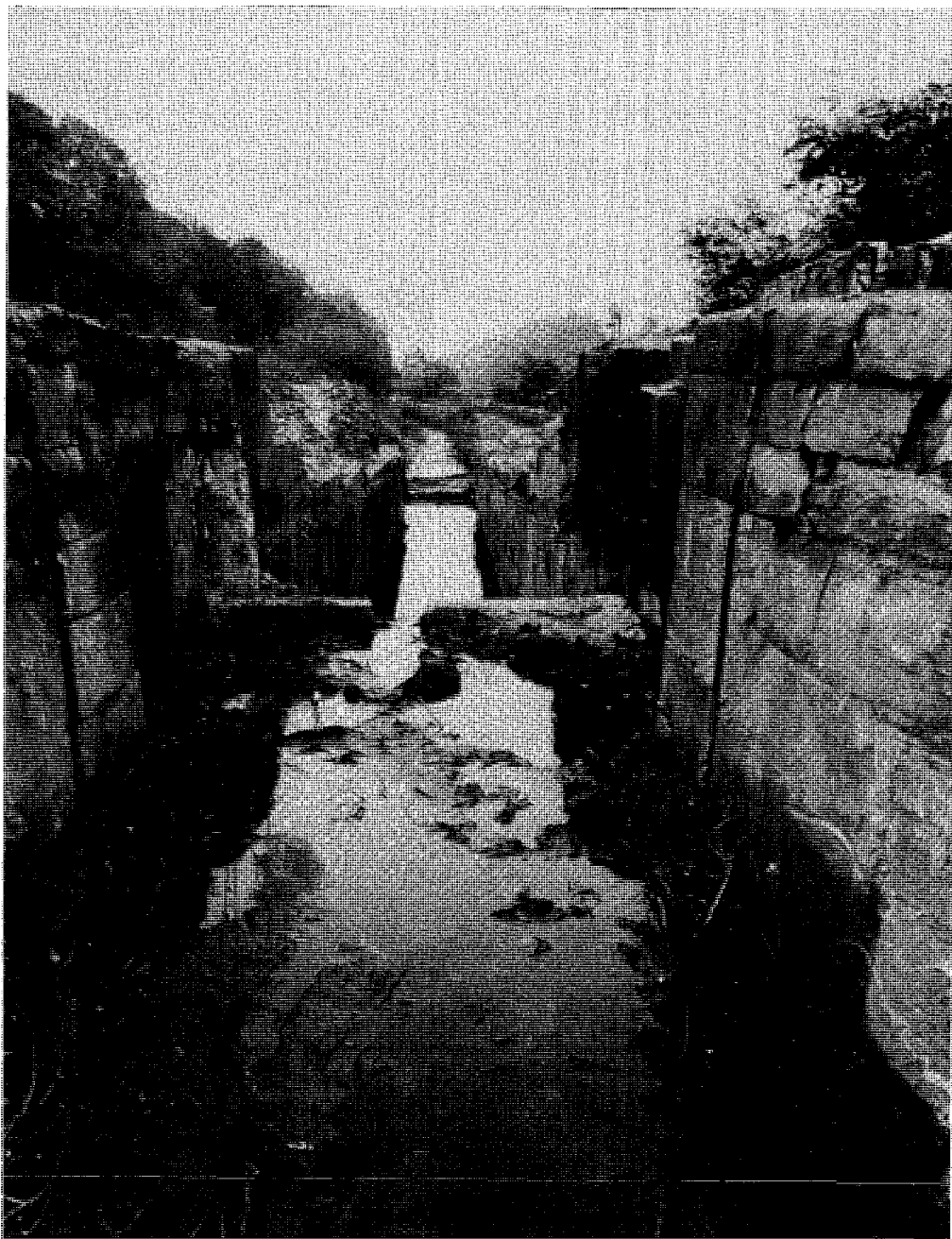
**For further details, or to make your reservation, please contact :**  
**Peter Hawley, Sales & Marketing Manager,**  
**York House Hotel, York Place, Ashton-under-Lyne, Lancs OL6 7TT.**  
**Tel:0161-339 0230 Fax: 0161-343 1613.**





Then & Now ... The pound above Lock 28E as seen from West Slaitwhaite Road.  
Dredging and towpath works in mid 1980's. Photos: A. Ogborn & R. Gough





Then & Now ... Lock 27E at Waring Bottom looking towards Lock 26E.  
Restored in mid 1980's. Photos: A. Ogborn & R. Gough





Then & Now ... Towpath and dredging work above Lock 17E, Linthwaite.  
Completed in mid 1980's. Photos: R. Dewey & R. Gough

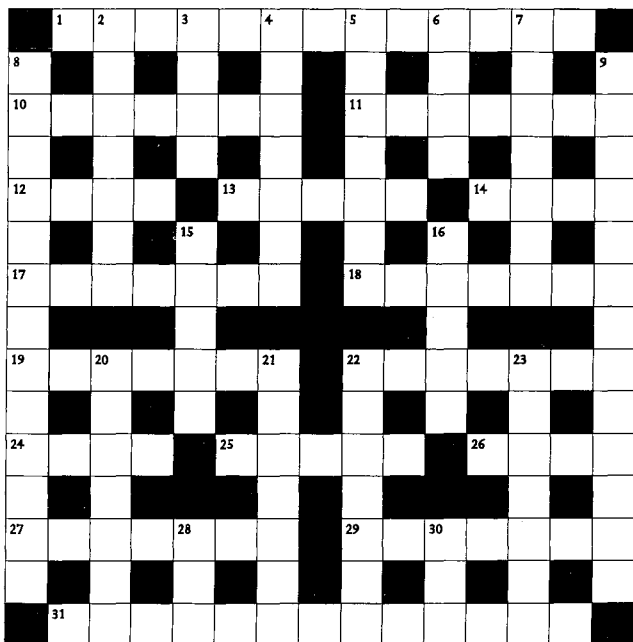




Above: Waterways Recovery Group (WRG) get stuck in at the Wool Road Transhipment Warehouse, or maybe they're planting themselves to grow more volunteers? Photo: K. Wright

Below: Benjamin Outram (Benji), the Society's first 70' trip boat, at Lock 33E, surrounded by familiar Society faces! Photo: R. Dewey





7. At the end of the cruise, pre prandially, Gin, Tonic, Lemon and an .....(3,4)
8. Snob hall as bin, off the T & M at Burton (8,5)
9. Not old, not meek, so go subterranean on the Oxford Canal (7,6)
15. So Don, wrap long hair up, keep it out of lock gear (5)
16. Southwards either side of the present - winter weather coming (5)
20. Fragment of cloth. But there's no F in clothing (7)
21. Not how old the bottom of your boat is but it's depth (7)
22. Red fort on Chesterfield canal? (7)
23. O Roland, let's holiday in Florida (7)
28. Not a measure of weight (3)
30. Cafe where not many people go (3)

## EASY

### ACROSS

1. Terminus of the Stratford canal (8,5)
10. Horse must be equipped with this before it can pull the boat (7)
11. How you feel after a good meal in canalside pub (7)
12. The front of a boat (4)
13. To which the wheels of a railway carriage are attached (5)
14. How your hands are after hours at the tiller on a cold day (4)
17. Said to make the heart grow fonder (7)

## CRYPTIC

### ACROSS

1. Inn for cab bats, but would Shakespeare have washed in here? Not very likely. (8,5)
10. Equine equipage? (7)
11. Let peer feel full at the end of a good meal in canalside pub (7)
12. Gent makes obeisance at the front of a boat (4)
13. In a bog i.e., find part of a railway carriage (5)
14. How your fingers go after many hours steering in cold weather (4)
17. Cab seen leaving, does the heart grow fonder? (7)
18. Llanwhe locks - not in Wales but on GU (7)
19. Nautical diary? (7)
22. At bow or stern of vessel with oars (7)
24. Care for an area of ground (4)
25. Cruise at sunset, sitting (5)
26. Scheme up a design (for a boat?) (4)
27. I.e., train to get the boat moving and overcome this (7)
29. Point North with coffee and break the law (7)
31. Was he the first lock keeper in the east? (7,6)

### DOWN

2. Was real cruise through T & M village? (7)
3. A boat may not have fingers but it must have hands (4)
4. Or shone off the boat (7)
5. Keep your brass polished and avoid this (7)
6. Spam in the electrics? (4)

18. First lock flight from Thames on GU (7)

19. A record of cruises (7)
22. A craft propelled by oars (7)
24. Measurement of an area of ground (4)
25. For sitting on (5)
26. Draw one before building your boat (4)
27. That which must be overcome to get a boat moving (7)
29. Act against the law (7)
31. Is he the lock keeper of 1E? (7,6)

### DOWN

2. T & M village and lock between Fradley and Branston (7)
3. The complement of a boat? (4)
4. Not offshore (7)
5. This happens to your brass if you don't keep it polished (7)
6. Current measurement (4)
7. Put this in your G & T to cool it (7)
8. What's left of the Bond End canal at Burton on Trent (8,5)
9. Oxford canal goes subterranean near Rugby (7,6)
15. In which to contain long hair (5)
16. Winter weather feature (5)
20. An article of clothing (waterproof?) (7)
21. Another term for the draught of your boat (7)
22. Town at midpoint of the Chesterfield canal (7)
23. Florida resort (7)
28. Weight measurement from which tolls were calculated (3)
30. Not many (3)

Solution in the Spring Issue 113



# Pennine

Before I start the final episode of the 1988 journey round the Stratford Ring I have a confession to make - we have succumbed and become dog owners again. Little William was a hard act to follow but, after 16 months of pining, we have acquired Bill, a long-haired standard shaded red dachshund, seven months old at the time of writing and with a wonderful temperament - I am trying to teach him how to bark!

To proceed - we're on the Stratford Canal near Salter Street about to start the last day of our holiday.

## DAY 7 - SATURDAY

Sailing Time: 9 - 8.30

Weather: Fine & Sunny

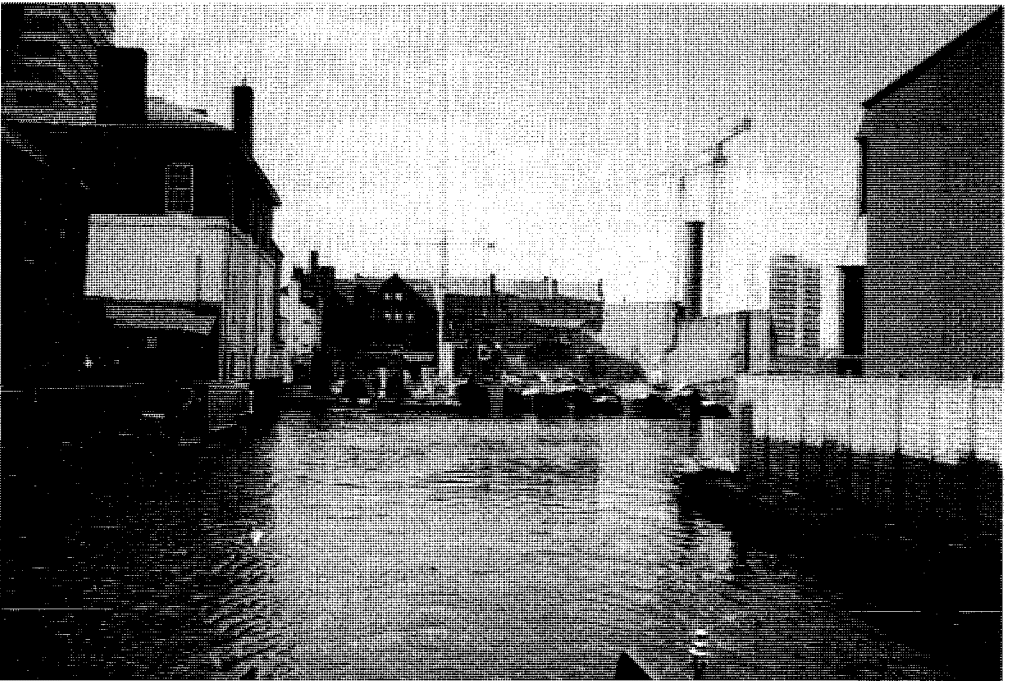
Destination: Alvechurch Base

Locks: NIL - unless you count an open stop lock!

The last day has arrived all too quickly. Bit of a lie-in and set out at 9am. Cold breeze but already the sun is warming it up - not bad for 23 April. Had breakfast on the go - remarked on

what a litter-free canal this had been then almost immediately passed some caravan sites whose rubbish had been tipped down the canal cutting side. Lovely! Decided to start cleaning the boat - using the super dooper 240v. vacuum cleaner - only to have to call HIM to help improve the suck! The vac. hadn't been emptied for yonks. Ken took the thing apart and gave it a 1000 mile service - cleaning over in a couple of hours - floor a lot cleaner than when we came aboard - (not surprising if the yard used the vac!) Took on water and Ken cleared the weed hatch of underpants, socks, plastic bags, sticks and a fan belt from a lorry! Should run a little better, now.

Stopped for lunch at The Horseshoes, where the A435 crosses the cut, and had a welcome pint or two and lovely crusty bread sandwiches. Sun well and truly out by now so very pleasant sailing. Canal hereabouts very pretty, plenty of wildlife - had to slow down for a duck and TEN ducklings (hectic life!). Squirrels, Canada Geese, one on a nest with 4 eggs, water voles, plenty of bird life including a Jay though, having forgotten





## THE WIFE'S TALE - PART 25

the Observer book, we cannot recognise the less familiar ones - to us that is, living just below the tree line!

Approached King's Norton junction and Ken went ashore to open a swing bridge. Simon was driving, in a rural tranquil stupour, and drove through the gap before HE had the bridge properly open. Result, a nasty tuck on the cabin edge on our brand new boat! Fortunately the design allows a 4" or 5" leading edge before the front cabin bulkhead so the damage is superficial to anyone with a 3'0" long pair of pliers! Rather took the edge from the birdwatching, though.

Plenty of time in hand so we turned right at King's Norton junction and went up to Birmingham, past Cadbury's enormous complex, Birmingham University - a very pretty and well

maintained stretch of canal and well worth the extra miles. The city centre tower blocks loom in the (not too) distance.

We got as far as Gas St. Basin in the city centre and turned round amid the famous collection (now gone) of residential working boats. We wondered at all the new modern, canal-side buildings (including a pub) with "no mooring" signs and hoped that common sense would prevail in time.

Back down to King's Norton and straight on into the final stretch, including West/Wast Tunnel, at 2726 yards one of the longest in the country - 3/4 of an hour of eerie canalling. Four boats passed us in the tunnel - first day out from Alvechurch - not much room for error for the inexperienced! Moored up at Hopwood to check the weed hatch - batteries are red hot and the alternator isn't working - good job we are finishing and not starting!

Completed our journey through beautiful countryside in evening sunshine and arrived at the base for dinner and reversed into our proper mooring. Took most of our stuff to the car and took a few last pictures of the boat. Then to the Club House to renew our acquaintance with the landlord Bill and his dachsy loving wife. Two other boats had returned and all the crews joined the Alvechurch employees for a good natter. What a terrific bonus the Club House is for Alvechurch.

And so to bed.

Next day dawned to gorgeous blue skies and a hot sun. Just right for a drive home! The boatyard forgave us for bending the cabin - they were much more concerned at our problems with the electrics and gave us our fuel deposit back in full, in compensation. A very good, friendly, firm to be with and, 240 volt problems aside, clearly among the finest boats in the water. We will be sailing Alvechurch again!

Bought a Stratford Canal brass for the collection and headed home.

If the Editor will allow I might soon be telling you about the Cheshire Ring - holidays in Ashton and all that!



Below Left: Gas St Basin, Birmingham  
Below: King's Norton Stop Lock. Photos: A & K Wright

**TOWPATH TREKS** is the only U.K. organisation specialising in canalside walking holidays. We are an independent business, but have close links with British Waterways, who manage the canal system, and with a number of groups concerned with the countryside and canal preservation and restoration.

We provide:

- pre-booked, confirmed bed and breakfast accommodation in a variety of hotels, guest-houses, inns, farmhouses and family homes.
- transfer of main luggage between overnight stops.
- detailed route notes indicating places and items of interest, locations of suitable

venues for meals and refreshments en route and at each overnight stop, and locations of accessible shops, telephones, Post Offices, etc.

- alternative routes for any long-term diversions.

We currently have 20 routes available, between; London, Slough, Aylesbury, Oxford, Northampton, Stratford, Worcester and Birmingham, covering the Grand Union, South Oxford, Stratford, and Worcester and Birmingham Canals.

More details may be obtained from:

Towpath Treks,  
15 Penrith Way,  
Aylesbury,  
Bucks HP21 7JZ

## DECUS ET TUTAMEN

For those of you who have fond memories of 23 years ago when the last vestiges of decent pocket wearing coinage weighed heavy with its intrinsic value and nomenclature befitting the denominations of the day; when wallets required yards of finest Moroccan to adequately protect the generously sized notes and the aroma of polycarbonate plastic derivatives were alien to the leather workers craft, here's a quiz to bring a nostalgic tear to the eye..... Translate the following into their Pounds, Shillings and Pence, total them and wait for Issue 113 for the correct answer. For the post-decimal amongst you, flatter your parents by asking your grand-parents for help and revel in the joys of base 12 and base 20 maths!

	£	s	d
1. OLD BIKE	.....	.....	.....
2. PIG	.....	.....	.....
3. LOCK WORKER	.....	.....	.....
4. SINGER	.....	.....	.....
5. LEATHER WORKER	.....	.....	.....
6. ROYAL HEADRESS	.....	.....	.....
7. RULER	.....	.....	.....
8. STONE	.....	.....	.....
9. HAIR STYLE	.....	.....	.....
10. DISTANT OBJECT	.....	.....	.....
TOTAL	£.....	.....	.....



'Water Watch' has been established by the Mersey Basin Campaign to work with others, tackling problems of litter and waste in rivers and canals across the region.

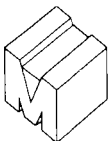
The WATER WATCH GUIDELINES aim to give practical advice and information on how to achieve effective management of materials and solid waste in order to prevent pollution of the water environment. The GUIDELINES are aimed at all those involved with the development or operation of waterside sites:

**'PLANNING A WATERSIDE DEVELOPMENT'**  
Guidelines for Architects, Designers and Planners

**'SAFEGUARD THE WATER ENVIRONMENT'**  
Guidelines for Contractors and Developers

**'LOOK AFTER YOUR WATERFRONT'**  
Guidelines for Waterside Businesses

More details about Water Watch can be obtained from:



Mersey Basin Campaign

**WATER WATCH**  
c/o N.R.A. 'MIRWELL'  
CARRINGTON LANE  
SALE M33 5NL



**TIDY  
BRITAIN  
GROUP**

*"Canal & Riverboat's" unique four part guide to restoration work throughout the British Isles during the past twelve months.*

*Edited by MICHAEL HANDFORD*

### Restoration Round-up

#### PART ONE

#### *Major national restoration schemes*

"...to the national network. Watch this space for further details.

#### **Huddersfield Narrow Canal (2000)**

What *can* one say about the Huddersfield Canal Society, other than marvel at their drive, professionalism and verve? Only HCS would launch a major fund-raising appeal to complete the canal (for £23 million no less), launch it in the Houses of Parliament, and expect to get the lot! Far from fainting from shock, ministers, civil servants and MPs led by the redoubtable Geoffrey Dickens MP are reported to be muttering approvingly. Given their talent for instigating new restoration ideas, it comes as no surprise to learn the provisional final opening date is booked for 4pm on 4th April 2004!

Aided by Derelict Land Grant and local employment schemes, restoration is now proceeding at a very rapid pace. The largest scheme underway at present is the complete restoration of the Diggle flight of locks leading up to restored locks 31W and 32W on the Lancashire side of Standedge Tunnel. These are now almost finished after six years work by HCS and WRG volunteers. It has been financed by a £800,000 DLG awarded to Oldham MBC. The work is contracted to HCS Restoration (a subsidiary of HCS) using mostly a Community Action programme and should be completed by 1995.

Prospects for reopening Standedge Tunnel earlier rather than later continue to improve. Ove Arup have measured air flows in the tunnel to assess potential ventilation problems. Some sort of electric traction may be necessary to pull boats

through the tunnel. Now all the costs of restoring the tunnel are known, it will be possible to submit DLG applications of £2 million+ to reopen the longest navigable tunnel in Britain by 1996-7. The implications for Norwood, Lapal and Sapperton Tunnels on the Chesterfield, Dudley No. 2 and Cotswold Canals are enormous.

The extremely encouraging picture is easily encapsulated by a number of simple acts and modest predictions. Firstly, when the Diggle flight is complete, 62 out of the 74 locks on the canal will be restored and operational. Secondly, on the eastern side the canal is substantially complete apart from the Slaithwaite infill, Lees Mill Lane, Holme Mills Swingbridge, Mark Bottom Bridge and the section from Manchester Road to the University. Thirdly, if the present rapid momentum is maintained, then apart from the Stalybridge section, the whole canal should be fully restored by c. 2001 at the latest.

#### **Lough Allen Canal (1994)**

The last section of the canal has ....."

*Reprinted from Canal & Riverboat, November 1994 by kind permission of Norman Alborough, Editor.*

---

6th July 1994  
Grand Union, Braunston

Dear Alwyn,

By the time you receive this letter you will have had a successful Ashton Festival and, no doubt, are preparing for the National.

We have completed the K & A having spent two months there, which was an experience. Obviously everything is not perfect but improves each year. I have collected various literature for your interest and information. The Kennet and Avon Trust, which as you know, was very strong during the restoration and final 'through route' success, is still very active and supports ("keeps going and pushing") B.W., for the benefit of all users.

We have just received our Spring Pennine Link which is very informative as usual.

29 Sunnyside Grove  
Ashton-u-Lyne OL6 6TN

Dear Alwyn,

The photograph of Tudor Mill on page 42 of "Plink" (No. 109) in Robert Aickman's article must provoke quite a number of anecdotal stories. It would be interesting to have some background information on the print. Some readers may not realise that the location is what is now seen to be the centre of the Tameside Canals Festival site and is the main entrance to this expanding event.

This is the first picture I have seen of the mill - and in all truth - I have not been all that certain of the exact location of the mill. The picture conveys an impressive & statuesque chimney, whilst the building shows the quality of fenestration for which these mills are rightfully renowned. The demise of the building, I believe, was caused by fire. The remains of the site became incorporated into the site of a well-known local builders' merchants - but of particular interest is that, on moorings flanking the canal on this site our local cruising club - Tudor Cruising Club was founded by four local enthusiasts.

Further back in time, earlier prints show an august classical-style building believed to have been owned by the now notorious Dr.Wroe.

The seemingly smaller building in the middle distance in the print is the recently restored and

refurbished Cavendish Mill. For years this Grade II (starred) equally impressive mill looked as though it was going to be a prize claim for the vandals. With its prominent central location it was clearly a "carbuncle on the face of a well-loved friend" -- to quote a well-known environmentalist. The precarious state of the hoist necessitated a re-vamp of the civic cruise - carrying the Mayor and civic dignitaries - at the T.C.F. three years ago.

On viewing the figures on the "hump bridge", I hope that the one on the coping is merely demonstrating his balancing skills and in no way anticipating an ominous decision that prompted this bridge to be known as the "Bridge of Sighs" as a result of desperate acts in the "20's and 30's".

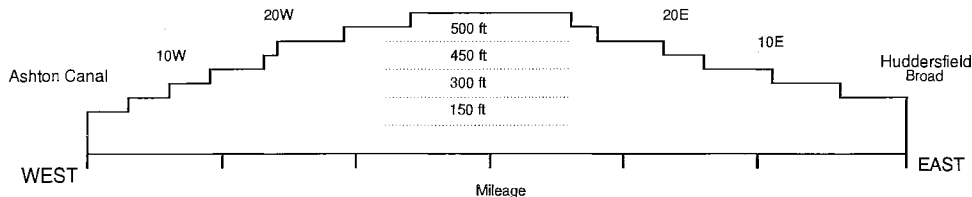
By the way, one wonders whether the splendour of Tudor chimney would have attracted the purchasing attention of the solitary Junction mill chimney had it been standing. It seems that the purchaser has acquired the Junction chimney as an example of industrial archaeology (cost £2,000) and intends to preserve it. It sounds like an interesting project -- let's hope there aren't any echoes of Alf Hatton here.

Jack Patterson (Chairman: Tudor Cruising Club.)

*Thanks for the letter and observations Jack. Sorry but I have no information about the picture except to say it was reproduced with the kind permission of Waterways World from the March 1974 edition. Ed.*

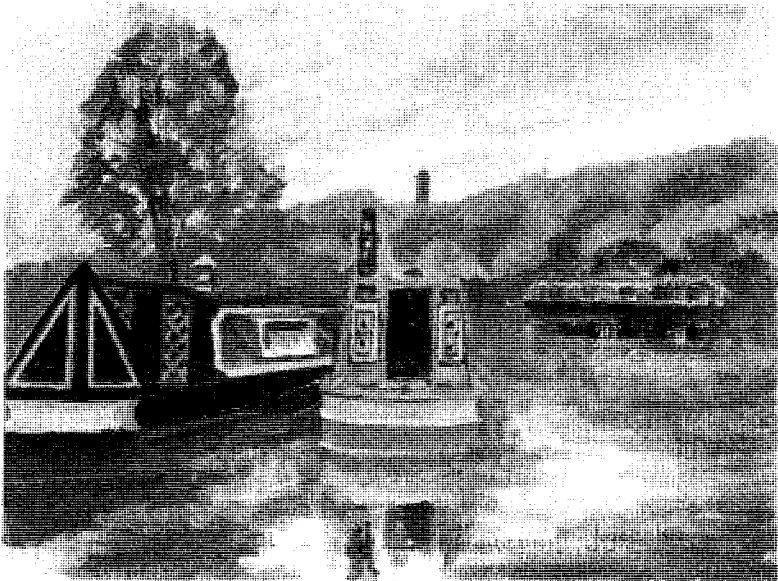
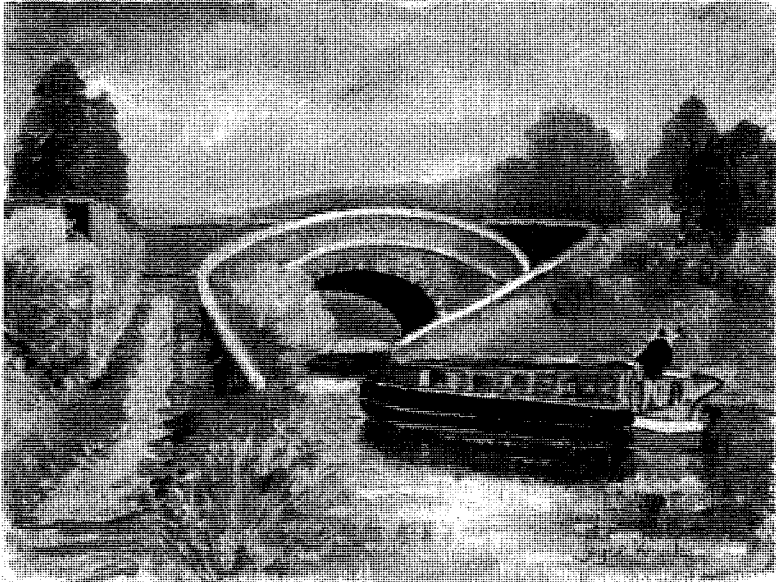
May I suggest, in support of your already outline canal route cartography, a further diagram, based as follows, (shown diagrammatically and not intended to be accurate or to scale!):-

### SECTION ALONG HUDDERSFIELD NARROW CANAL (HEIGHT IN FEET ABOVE MEAN SEA LEVEL)



Best wishes, Richard & Barbara Humphreys

Local artist, Joyce Knowles, will be exhibiting a selection of her work in oil, watercolour and pastels at the Wool Road Transhipment Warehouse from Saturday 27th April to Sunday 4th June 1995; 1.00pm to 4.00pm daily. Her oils of 'Horse Cross Over Bridge' (top) and 'Boats at Huddersfield' (bottom) are reproduced below.



## THE SOCIETY WELCOMES THE FOLLOWING NEW MEMBERS:

- 2257 Dr Bestwick, [REDACTED]
- 2258 Mr & Mrs McMahon, [REDACTED]
- 2259 Mr & Mrs Buxbaum, [REDACTED]
- 2260 Mr Wild, [REDACTED]
- 2261 Mr Broadbent, [REDACTED]
- 2262 Mr Batten, [REDACTED]
- 2263 Mr Johnson, [REDACTED]
- 2264 Mr Macdonald, [REDACTED]
- 2265 Mr Pratt, [REDACTED]
- 2266 Mr Hackett, [REDACTED]
- 2267 Mr & Mrs Tetley, [REDACTED]
- 2268 Mr Emblen, [REDACTED]
- 2269 Dr O'Brien, [REDACTED]
- 2270 Mrs Hampson, [REDACTED]
- 2271 Mr Parker, [REDACTED]

---

**Once more**, and almost certainly for the last year, our Sales Team stalwarts Gay & Steve Quilter will take to the road with the Society's Sales Trailer. These are the provisional sales venues up until July and should they be in your neck of the woods, why not pop along, ideally to give them a hand or at least a cheery greeting!

May	6th-8th	Saddleworth Canal Festival
	20th-21st	Chorley
	27th-29th	IWA National Trail Boat Festival - Linthwaite
June	3rd-4th	Wakefield
	10th-11th	Chesterfield (provisional)
	17th-18th	Doncaster
	24th-25th	Tunnel End Summer Fair
July	2nd	Marsden
	8th-9th	Tameside Canals Festival - Ashton
	16th	Dewsbury (provisional)

---

## SOLUTION TO CROSSWORD No 7 - ISSUE 111

### ACROSS

1. Raffle 5. Stroke 9. Bacon Lane Bridge 12. Rung 13. River Rother 14. Injure  
15. Major 17. Northampton 19. Col 21. Swinton Junction 23. Yonder 24. Rennet

### DOWN

1. Ribble 2. Factory Junction 3. Link 4. Wind 6. Turn 7. Old Turn Junction  
8. Emerge 10. Regents 11. Condemn 12. Re 16. Mersey 18. Planet 20. Ache 22. Bar
-

## WEST SIDE

- Wed. 10th May Out & About in Uppermill.  
Meet at the Museum Car Park, 7.45 for 8.00pm.
- Wed. 14th June Boat trip aboard the 'Pennine Moonraker'  
Meet at the Museum Car Park, 7.45 for 8.00pm.
- Wed. 12th July Out & About in Mossley.  
Meet at the Tollemache Arms, 7.45 for 8.00pm.

## EAST SIDE

Venue for the East Side meetings is under review;  
members are welcome to attend West Side events.

---

## BACK NUMBERS

THE FOLLOWING BACK NUMBERS ARE AVAILABLE FREE FROM:

John Maynard, 29 Thick Hollins Drive, Meltham, Yorkshire  
Please send an A5 size stamped, addressed envelope (29p)

10, 22, 23, 24, 25, 26, 28, 29, 30, 31, 32, 33, 34, 35, 36, 37, 38, 39  
40, 41, 42, 44, 45, 46, 47, 48, 49, 50, 51, 52, 53, 54, 55, 56, 57, 58, 59  
60, 61, 62, 63, 64, 65, 66, 67, 68, 69, 70, 71, 72, 73, 74, 75, 76, 77, 78, 79  
80, 81/82, 83, 84, 85, 86, 87, 88, 89, 90, 92, 93, 94, 95, 96, 97, 98, 99  
101, 102, 103, 104, 105, 106, 107, 111

*PLEASE NOTE THAT CERTAIN ISSUES ARE NOW REDUCED  
TO SINGLE COPIES ONLY - SO, FIRST COME, FIRST SERVED!*

---

### ADVERTISING RATES

	Per Issue	Per Year
Quarter Page	£9.38	£37.50
Half Page	£18.75	£75.00
Full Page	£37.50	£150.00

### NEXT PRESS DATE

Articles, letters, etc., for the  
Spring 1995 issue of Pennine Link  
should reach the Editor  
by the 12th May 1995