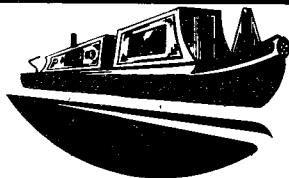


HUDDERSFIELD
CANAL
SOCIETY

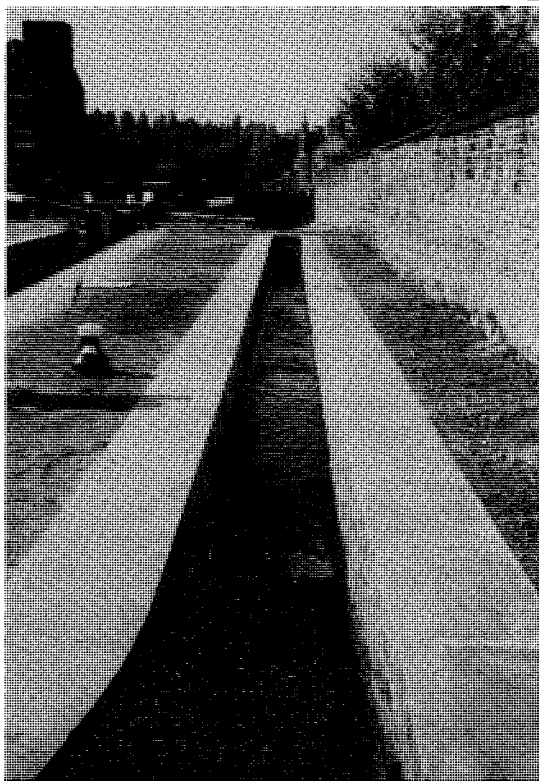


PENNINE LINK

No. 96

November/December 1990

*Seasonal
Good Wishes
to all our
Readers*



FREE TO MEMBERS

75p

Huddersfield Canal Society Limited,
239 Mossley Road, Ashton-under-Lyne, Lancs., OL6 6LN
Tel: 061-339 1332 Fax: 061-343 2262

Chairman	David Sumner	4 Whiteoak Close, Marple, Stockport, Cheshire, SK6 6NT. Tel: 061-449 9084
Vice-Chairman & Working Party Co-Ordinator	Trevor Ellis	20 Batley Ave., Marsh, Huddersfield, HD1 4NA. Tel: 0484 534666
Company Secretary	John Fryer	c/o Ramsdens, Solicitors, Ramsden Street, Huddersfield, HD1 2TH.
Treasurer	Leslie Winnard	c/o Binder Hamlyn, Scottish Provident House, 52 Brown Street, Manchester, M2 2AU. Tel: 061-831 7121
West Side Chairman	Jack Carr	19 Sycamore Avenue, Euxton, Chorley, Lancs., PR7 6JR. Tel: 02572 65786
Projects Officer	Keith Gibson	27 Penistone Road, New Mill, Huddersfield, W.Yks., HD7 7JP Tel: 0484 681245
Festivals Officer	Brian Minor	45 Gorton Street, Peel Green, Eccles, Manchester, M30 7LZ. Tel: 061-789 4867
Press Officer	Alex Ramsden	16 Edgemoor Road, Honley, Huddersfield. W. Yorks., HD7 2HP. Tel: 0484 662246
Sales Officer	Fiona Tewson	263 Manchester Road, Mossley, OL5 9AN Tel: 0457 836581
Membership Liaison Officer	Sue Chadwick	14 Simmondley New Road, Glossop, SK13 9LP. Tel: 0457 864031
Editor	Alwyn Ogborn	92 Lane Head Road, Lees, Oldham. Tel: 061-624 0736
Publicity Officer	David Finnis	Hill Top Cottage, Birns Road, Marsden, Huddersfield, HD7 6NW.
Vice Chairman	Ken Goodwin	11 Black Road, Macclesfield, Cheshire, SK11 7BZ. Tel: 0625 616072.
Local Authority Members	Garth Pratt	The Pent House, Northgate, Almondbury, Huddersfield, W. Yorks. Tel: 0484 536768.
	John Sully	5 Primley Park Road, Leeds, W. Yorks. LS17 7HR Tel: 0532 685600
	Alan Brett	31 Woodlands Road, Milnrow, Rochdale, Lancs., OL16 4EY. Tel: 0706 41203

NON-COUNCIL POSTS

Managing Director HCS (Restoration) Ltd.	Stephen Whitby	Huddersfield Canal Society Ltd., 239 Mossley Road, Ashton-under-Lyne, Lancs., OL6 6LN Tel: 061-339 1332
1332 Planning Consultant	Mike Thompson	32 The Balk, Walton, Wakefield, WF2 6JU. Tel: 0924 250919
General Secretary	Frank Smith	Huddersfield Canal Society Ltd., as above
Membership Secretary	Mrs. J. Young	Huddersfield Canal Society Ltd., as above
Boats Officer		

Council Members	_____	Inside front cover
Editorial	_____	page 2
AGM	_____	3
Chairman's Remarks	_____	5
Civic Award	_____	6,7
Diggle Restoration	_____	9
Mini Profile	_____	11
Fund Raising	_____	12
Restoration Maps	_____	13-16
Kirklees Canals Festival 1990	_____	17
Boat News	_____	18
Yule-tide Yomp	_____	20
Letters	_____	22,23
IWA Charity Bank	_____	24
Just for Fun	_____	26
Chuckle Page	_____	27
Next Press Date	_____	28
Advertising Rates	_____	28
New Members	_____	Inside back cover
Back Numbers available	_____	Inside back cover

Front cover picture:

THE NEW BYWASH, LOCK 16

Photo: Steve Whitby

HUDDERSFIELD CANAL SOCIETY LIMITED

COMPANY OBJECTIVES

The Huddersfield Canal Society Limited is a company limited by guarantee and operates using both paid and volunteer staff from bases in Greater Manchester and West Yorkshire.

Its aim is to restore the Huddersfield Narrow Canal to a navigable standard by initiating and co-ordinating a joint restoration programme in association with British Waterways, Oldham M.B.C., Tameside M.B.C., Kirklees M.B.C. and all other relevant bodies. In achieving this aim it will:

- Preserve and extend the numbers of people involved as voluntary society Members.
- Initiate, develop and co-ordinate appropriate sub-committees and/or subsidiary companies to provide the resources required.
- Give good service and a fair deal to customers and be considerate of the interests of the volunteers, staff and of the community.
- Use its unique experience in Canal Restoration to develop and promote the tourism related benefits of restoring the Huddersfield Narrow Canal.
- Provide attractive employment and progressive career opportunities for those who work for the Society and its subsidiaries.
- Enhance its established reputation for friendliness.
- Preserve and extend its appeal to Local enterprise, Local Authorities, Statutory Bodies and other voluntary groups.
- Ensure, where possible, the continued operation of the Society and its subsidiaries beyond completion of the restoration programme.

H.C.S. Ltd., Regd. Office, Ramsdens, Ramsden Street, Huddersfield, HD7 4AP.



THE LAST ISSUE OF 1990, a very eventful year behind us and much planned for 1991. As already mentioned, there are proposals for boat rallies and festivals at various venues along the canal line, plus 'onshore' activities such as quiz nights, fancy dress pub crawls, a sponsored swim, canoe races, etc., and an evening with the Houghton Weavers at the George Lawton Hall, Mossley, on February 9th. All events will be publicised in Pennine Link, and elsewhere as appropriate.

As I put Pennine Link together and write various bits and pieces, I sometimes wonder if anyone actually reads it. This thought is triggered by the fact that the response to competitions or requests for ideas or assistance, or simply correspondence for the letters page, bring a sparse or non-existent reaction. Some recent examples: To the teaser by Ian France, on where you would stop to see Preston or Whitby along the canal – nothing. To the notice of a Classic Gold night in Slaithwaite – nothing. To my request for a design for a counter collecting box for donations – only one model (an excellent piece of work), and that from a long-standing colleague of mine.

Another source of irritation is with the I.W.A. Last May I entered Pennine Link in the I.W.A. 'best society magazine' competition, sending the requisite number of copies (two issues) to the stipulated address. My vexation is not at failing to win – congratulations to Basingstoke Canal News for that accolade – but at having absolutely no contact from the organisers regarding my entry. I received no acknowledgement of receipt, and no notification of the winner. I found out the result from three small lines on page 54 of the November edition of *Waterways World*. Are we such small fry that we don't merit any manners?

'Ave ye done?

Yup! Sorry about the moans, but it's off my chest now.

Social events have been organised for 1991, so see back cover for details. A re-jig of east-side and west-side meetings means that there are no joint meetings, but everyone is welcome to attend any of the meetings. Do go along, meet friends old and new, be entertained by the speakers and generally enjoy yourselves.

All that remains now is to wish everyone a very merry Christmas and a happy and prosperous New Year!

ALWYN OGBORN



A NOTE FOR YOUR DIARY

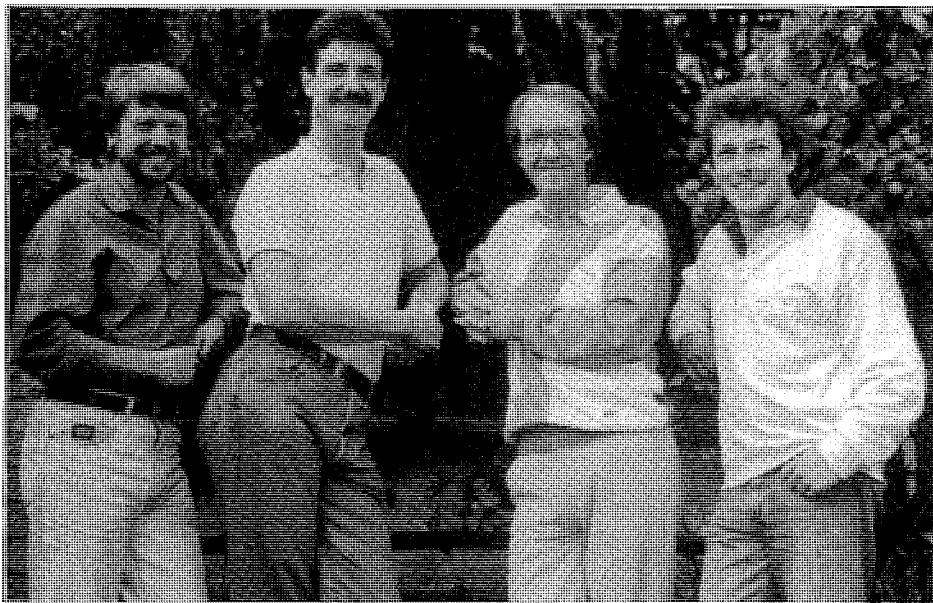


1991 ANNUAL GENERAL MEETING

May I give advance notice that the date fixed
for the next Annual General Meeting is
Sunday, 21st April 1991.

Formal Notice giving the time, venue and
agenda will appear in the next issue of
Pennine Link.

J.M. Fryer
Company Secretary



*THE HOUGHTON WEAVERS, booked by the Society for 9th February 1991
Photo: Creative Vision*

*Enjoy a warm country welcome at
The Diggle Hotel*



Home-cooked food our speciality
Meals served at lunch-time and evening, 7 days a week
Open all day Saturday and Sunday
Lunch-time specials include traditional Sunday lunch

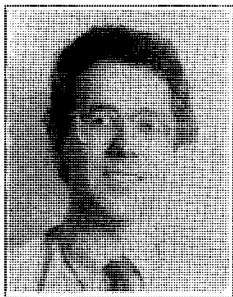
*** IN ITS BICENTENARY YEAR THE DIGGLE HOTEL GOES RESIDENTIAL ***

You can now stay at The Diggle Hotel, situated in the picturesque Pennine hamlet of Dig Lea

The Diggle offers three double bedrooms with TV, telephone, tea/coffee, residents' lounge, and own large car park.

For further details telephone Dawn on **(0457) 872741** or write to

The Diggle Hotel, Dig Lea Hamlet, Diggle, Nr. Oldham, OL3 5JZ.



IT IS SOME YEARS since I last visited the Dudley Canal Tunnel and the magnificent Black Country Museum.

On 20th September this year, with a party of members and officers from the Joint Committee, I 'did the tunnel' trip, courtesy of British Waterways and the Dudley Canal Trust.

On my previous visit I was told that 70,000 passengers a year were carried into the mines. Now over 100,000 visitors a year are transported past tasteful and informative tableaux and treated to an underground Son et Lumière –

this after the local authority and others invested over £1,000,000 in the construction of a new heading. I was impressed, and am sure that the Joint Committee could see possibilities for a similar attraction in Standedge Tunnel

My first visit to the National Waterways Museum in Gloucester took place whilst on a recent holiday in the Cotswolds (yes, I did visit the portals of the Sapperton Tunnel and other parts of the scenic Thames and Severn). The museum contains an excellent explanation of our canals and navigations – a tribute to Tony Conder and his colleagues. The 'hands on' exhibition really brings the canals alive.

Maybe my attention was diverted by guiding my young son around the exhibits, but I did not notice a section on canal restoration schemes. I would suggest that this could be remedied by making features of individual schemes, say for a one or two month period. I am sure we could provide the Waterways Museum with an up-to-date display of the Huddersfield workings, including the Tunnel Video.

1991 will be a difficult year for the Society. We are hoping for a successful bid for funds from the M.B.C. to augment our existing income. Unfortunately, it appears that the outcome will fall far short of our bid. Income from our capital will reduce as expenditure increases and we will need to look to British Waterways and local authorities in the West side to increase their grant if restoration is to continue at the present pace.

Members who have read our first Annual Report will note the strong emphasis on our private sector fundraising appeals. I urge you all to spread the word. Support our events and please let me know if you know of any companies, trusts, or other bodies who wish to support our cause. We now have a booklet with an address by Professor David Bellamy. Please ask for copies and distribute to interested parties.

Happy Christmas and a Prosperous New Year to you all.

DAVID SUMNER

FESTIVALS, BOATS and RANDOM THOUGHTS

not having me there, but were, nevertheless, resounding successes. (Am I talking myself out of a job, I ask myself!)

I did, however, manage to attend the presentation of an award for work of environmental excellence to the Society by the Civic Trust (sponsored by IBM) on Tuesday, 21st August at Portland Basin. As the Chairman and Vice-Chairman both had their day jobs to cope with, Frank Smith asked me to accept the award on behalf of the Society. Frank was scrupulously polite in his request – someone with office in the Society, able to make a speech in response, ideal person to do job, etc. What he meant, of course, was that he had madly rung round every other Council Member and the entire Board of HCS (Restoration) Ltd. and could not find anyone else free, and he knows I never stop nattering anyway. He did also give me all of 24 hours notice!

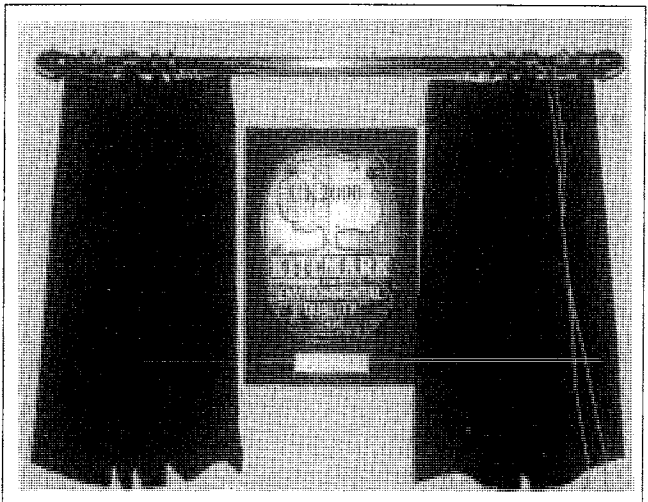
Actually, it was quite a nice little ceremony. Andy Smith of the Civic Trust made a speech from about 300 little memo-cards extolling the virtues of the Canal Society and finishing with all the remarks I had intended to use, causing a certain amount of mental paralysis! The presentation itself was made by Geoff Harrison, Regional Manager of IBM and, finally in response, I managed to remember to thank most people who have helped us over the past years. The Deputy Mayor of Tameside, Councillor Marjorie Bennett, then unveiled a plaque set in the wall of the Museum with the UK 2000 Logo. It is nice to see that the Society has this outward and visible sign of our contribution to the improvement of the canal corridor. We know we are doing the right thing, but it is pleasant when some outside body recognises our efforts and when those outsiders are as prestigious as the Civic Trust, as big as IBM and as close to hand as the local authority, it is trebly gratifying.

The event created quite a few column inches in the local press, all of it very friendly to the Canal Society.

BRIAN MINOR

The Kirklees Festival has been a resounding success from all reports. I was unable to attend for the second year running, for the simple reason that, as Mr. Littlewood seems unable to get my numbers on to one of his winning lines, I have to work to keep a thirsty motor car and a large dog fully satisfied!

The Marsden Festival and Tunnel End re-opening also had to operate under the tremendous handicap of



Photos by Fiona Tewson



*Brian Minor
receiving the
UK 2000 Award
from Geoff
Harrison*

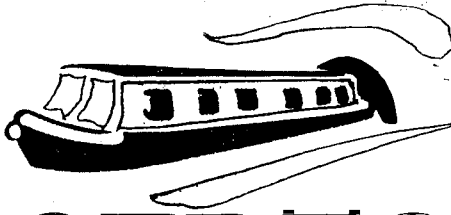


*Mayoress of
Tameside
Majorie Bennett
unveils the
plaque*



*Brian Minor in
suspended
animation*

P·E·N·N·I·N·E · L·I·N·K



EGERTON

Narrow Boats

THE OLD BOATYARD • WORSLEY ROAD • WORSLEY • MANCHESTER • M28 4WN
TEL: 061-793 7031 & 0492 57 2664

**When you take a break from fund-raising and restoration,
why not enjoy the waterways from one of our 'Lady Fleet'?**
Remember - The Duke of Bridgewater started it all from Worsley!
If you're passing, call in and see us.

KEN BAKER

mockridge

LABELS AND NAMEPLATES LTD

Viaduct Works, Cavendish Street, Ashton-under-Lyne, Lancs.
Telephone: 061-308 2331

ANODISED ALUMINIUM
CHEMICALLY ETCHED
SUB-SURFACE PRINTED PLASTIC
SURFACE PRINTED PLASTIC & METAL
ROLL LABELS & TICKETS
ENGRAVED

... The Specialist Manufacturers



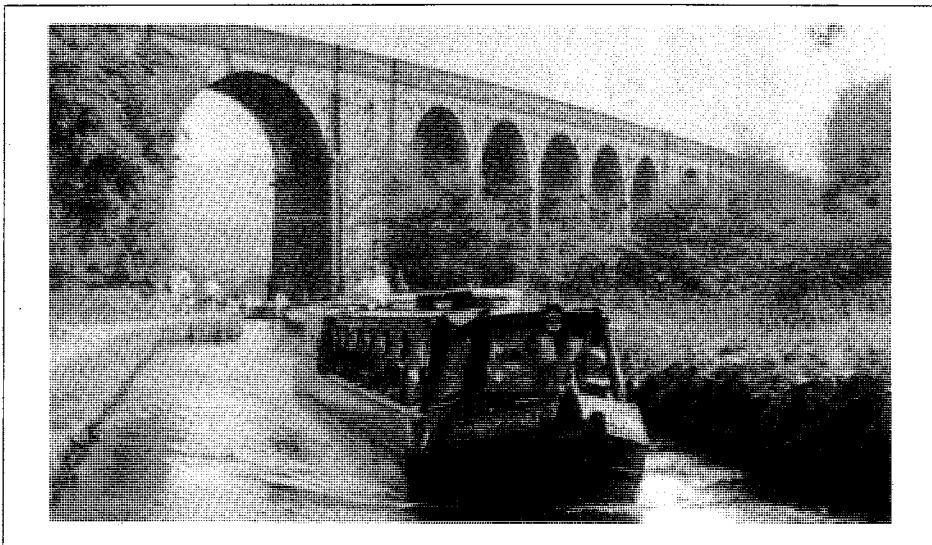
Work has progressed over the late summer and into autumn on the rebuild of the offside chamber wall of lock 32W, and at the time of writing the bulk of the work should be complete in November. The wall looks quite impressive at present, because with the other wall "missing" it brings home how much we have had to rebuild. Even the wing wall looks tall without its landscaping, particularly as there was no wall at all previously. We need to backfill the walls about three feet in depth and perhaps fifteen feet back, in addition to sloping the ground up to the wing wall.

The completion should be assisted by a visit from the newly-formed Waterway Recovery Group (North-East) on their first outing. Branches of WRG seem to be springing up at an amazing rate at the moment, although this is the first visit by any for a long while. The merely 'impossible' restorations such as the Huddersfield Narrow are now considered too easy for the real enthusiast, who relishes a challenge like the Hatherton Branch where the morning's work is to find the canal!

There are occasions when we can use greater numbers and this visit has come at a useful time with the backfilling and the need to clear the foundations on the towpath side.

Future Dates:- December 2 December 16
 January 6 January 20

TREVOR ELLIS



Pennine Moonraker at Limekiln Lock, Uppermill • Photo: Frank Smith

P·E·N·N·I·N·E · L·I·N·K

Aspley Wharf Marina LTD.



HUDDERSFIELD

Good selection of speedboats, cabin cruisers and inflatables in stock



**BOATS AND OUTBOARDS WANTED
ON BROKERAGE OR FOR CASH**



Skis, Wetsuits and full Chandlery Shop
Slipping facilities available
Ski Jackets, Buoyancy Aids, Mooring available
Chemical Disposal Point

PICTION SPEEDBOATS AND MARINER OUTBOARDS MAIN AGENTS

Visit us soon at

Aspley Basin, Aspley, Huddersfield

Telephone: 0484 514123

PEAK and PENNINE

Outdoor Equipment Specialists



Talks/Slide shows

Equipment Hire

Repairs

Children's gear

Maps & Books

Discount on bulk orders

Open Monday to Saturday

120a Blackmoorfoot Road,
Crosland Moor,
Huddersfield.
Tel: (0484) 653997

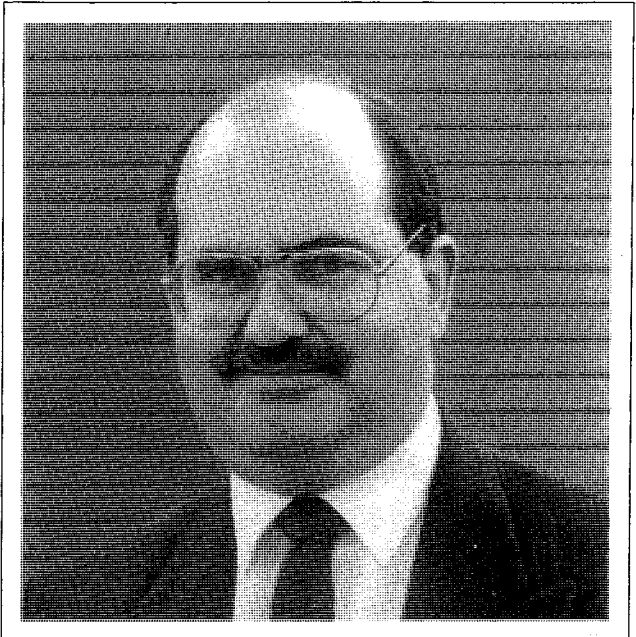
All this, plus helpful friendly
advice



A great many, probably the large majority, of society members will not know who's who, who does what, or be able to recognise council members and people actively involved with restoration, apart from a name at the foot of an article or inside the front cover of this magazine. Therefore I intend to publish a 'Mini-Profile' of our active members in selected issues of Pennine Link. This will include a photo, a little of their background, and how they became involved with canals in general and the H.C.S. in particular. Here is our treasurer –

LES WINNARD

Married to Christine, with two children, Andrew and Katie. A canal boat holiday on the Oxford Canal, River Thames and Grand Union, was the catalyst for Les to get involved with restoration schemes. An article by Bob Dewey in the Oldham Evening Chronicle round about 1975 prompted a letter to the Society. He joined and met up with Bob and Pete Freeman and became treasurer until in the early 1980s he had to give up due to pressure of work. (We all know how he felt). However, in 1986, at the request of



David Sumner (and thumb screws), he returned to the task and is doing a sterling job. Les is a chartered accountant and member of the Institute of Taxation, and works for Binder Hamlyn of Manchester. Judging by the way he has handled our investments and expenditure accounts, I think he should be renamed Les Wizzard!





Steve Whitby



Lynne Simpson



As has been mentioned several times in various forms, hints, suggestions and direct appeals, a lot more money is needed to complete the 'difficult bits' of the restoration programme, i.e., both ends and the middle. Regular readers will know of the three groups set up to handle various aspects of society control. The finance and fund-raising group is the prime mover of events aimed at raising the money required.

The group is led and chaired by the Society treasurer, Les Winnard (see mini profile in this issue), with 'on the ground' support from Restoration M.D. Steve Whitby and full time employee Lynne Simpson. Advice and guidance has been sought from professional fund raisers, and a varied series of events planned. To add zest to appeals, a number of well-known public figures have added their patronage to the restoration effort. Thora Hird, David Essex, David Bellamy

and Phil Sayer, are among the prestigious names supporting us.

Needless to say, these appeals will not organise and run themselves, and this appeal goes out to you – the society members – to come forward and help. As many members as possible are required to operate in their local areas doing such tasks as organising charity quiz nights, being a quizmaster, putting up posters (and removing them after the event), running a raffle, etc., etc. In March a series of fancy dress pub crawls are to be run, and in April a sponsored swim. Flag days and canoe races are earmarked for May and June respectively, and with the two established festivals it is apparent that a lot of help is needed. Other ideas in the pipeline are race nights, 'Krypton Factor' type assault courses, and a map of the canal corridor with advertising from firms along the line.

If you can help, or have any other fund raising ideas, contact Lynne Simpson on 061-339 1332.

Through navigation of the Huddersfield Narrow Canal is the ultimate aim. We must all pull together to achieve it.

P·E·N·N·I·N·E · L·I·N·K

Huddersfield Narrow Canal East Side Restoration Progress October 1990

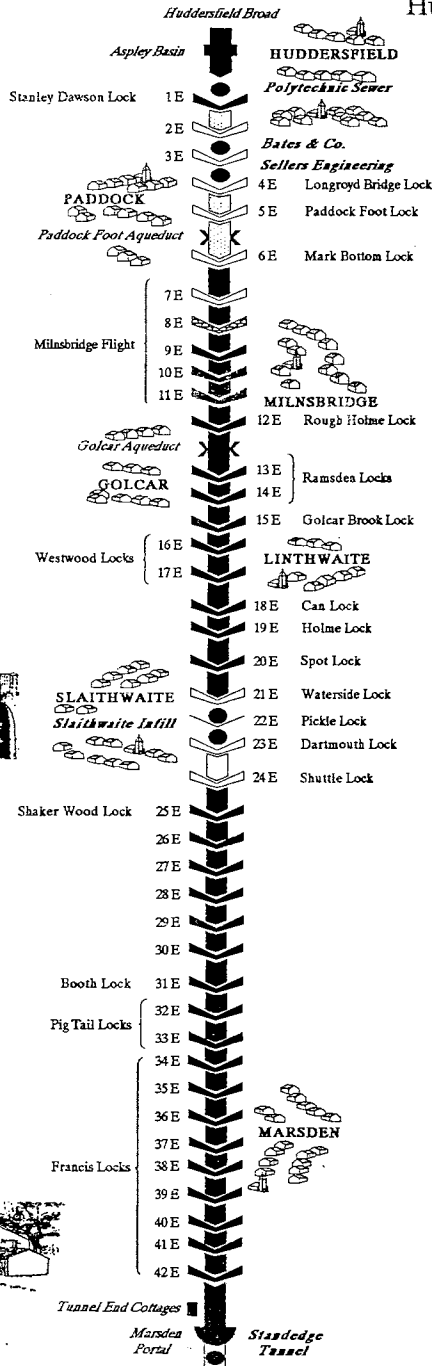
Legend

Locks

- Restored
- Under Restoration
- Derelict

Canal

- Dredged
- Scheduled
- Derelict
- Major Obstruction



Facts & Figures

- Built: 1795 - 1811
- Length: 19.8 Miles
- Engineer: Benjamin Outram, later Thomas Telford
- Standedge Tunnel Length: 3 miles 418 yards
- Height Above Sea Level: 645 ft

AJL

MEMBERSHIP DRIVE

**FULL RESTORATION
NEEDS YOUR HELP**

**PLEASE TRY TO
INTRODUCE A NEW
MEMBER BEFORE
THE NEXT ISSUE**

JOIN NOW!

Your support is needed now. The more members we have, the more effective is our voice. Help to re-open the Huddersfield Narrow with your pen, your spade, your moral support, or in any other way you have to offer.

I/We wish to join the Huddersfield Canal Society.

Name/s _____

Address _____

Postcode _____ Telephone _____

Occupation _____

Amount enclosed £ _____ Cheque/PO/Cash _____

I heard about the Society from _____

**MEMBERSHIP RATES: Family Membership: £6.00 Junior (under 18): £2.00
Voluntary Societies & Schools: £10.00 Corporate: £20.00 (min.) Life: £75.00**

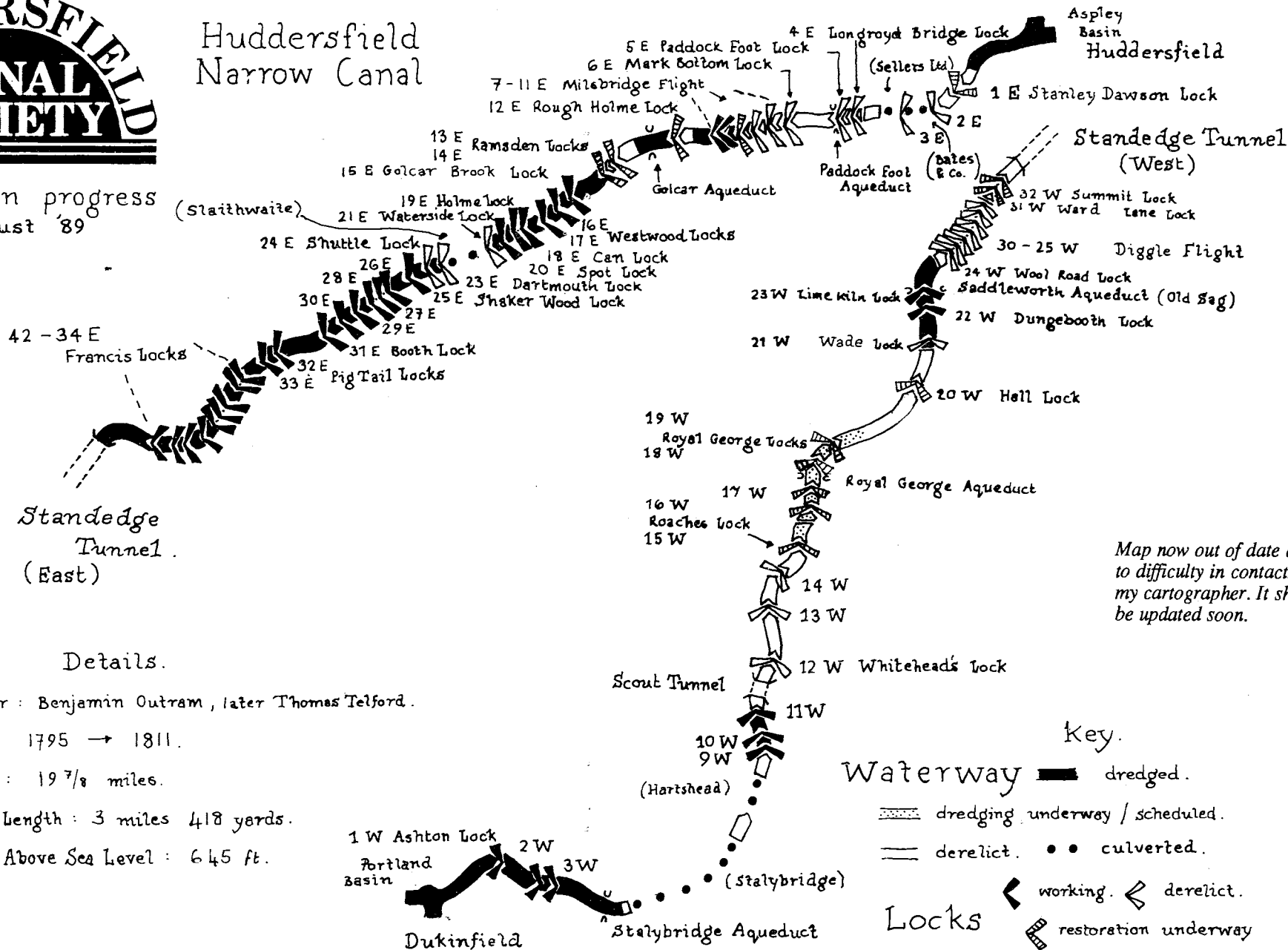
If elected I/we agree to abide by the Memorandum and Articles of Association of the Company.

To: Membership Secretary,
Huddersfield Canal Society Limited
239 Mossley Road,
Ashton-under-Lyne, Lancs.,
OL6 6LN.



Huddersfield
Narrow Canal

restoration progress
August '89



Map now out of date due to difficulty in contacting my cartographer. It should be updated soon. Ed.

Details.

Engineer : Benjamin Outram , later Thomas Telford.

Built : 1795 → 1811.

Length : 19 7/8 miles.

Tunnel Length : 3 miles 418 yards.

Height Above Sea Level : 645 ft.

Key.

Waterway dredged.

dredging underway / scheduled.

derelict. ●● culverted.

Locks working. derelict.

restoration underway

a.f.

SALES ORDER FORM

Please send me:-

Item	Quantity	Cost & Postage

Name: _____

Address: _____

Please make cheques payable to LOXVEND LTD.

To: Fiona Tewson,
263 Manchester Road,
Mossley, Oldham,
Lancs.,
OL5 9AN

NEW EXCITING H.C.S. TIE	Airforce Blue with Yellow Logo	£5.95 inc. p & p
--	-----------------------------------	------------------

BOOKS:

Pennine Passage - a Short History of the H.N.C.	£5.95 + 95p p & p
Pennine Link – Tunnel Survey Special	£3.00 + 95p p & p
The Rochdale Canal Book	£1.00 + 65p p & p
Walkers' Guide to the Lancaster Canal	£4.95+ 70p p & p
Narrow Boats (Hardback) Tom Chaplin	£15.95 + £2 p & p
Narrow Boats at Work (Paperback) Michael Ware	£7.99 + £1.40 p & p
The Aire & Calder Navigation	£4.95 + 80p p & p
Canals & Waterways - A History in Camera	£3.95 + 80p p & p
Observers Book of Canals	£3.95 + 50p p & p
Roses & Castles	£2.25 + 65p p & p
Discovering Canals in Britain	£1.95 + 50p p & p
A Short History of the Narrowboat	£1.99 + 65p p & p
Canal Barges & Narrowboats	£1.75 + 65p p & p
Canal Architecture	£1.75 + 65p p & p
Discovering Lost Canals	£1.50 + 65p p & p
The Story of our Canals (Ladybird)	£1.20 + 65p p & p
Lancashire Waterways - pecial Offer	85p + 50p p & p

NOTICE OF INCREASE IN PRICE OF SWEATSHIRTS & TEE SHIRTS:

<u>NOW</u> : HCS Sweatshirts:	S, M, L & XL	£8.95 + 50p p & p
" "	XXL	£9.45 + 50p p & p
HCS Tee Shirts:	S, M, L & XL	£4.50 + 30p p & p

AS FROM NOV/DEC PENNINE LINK:

HCS Sweatshirts:	S,M,L,XL,XXL	£12.00 + 95p p & p
HCS Tee Shirts:	S, M, L & XL	£6.50 + 70p p & p

PLATES:

Tunnel End, Dungebooth, Turnbridge – each	£4.95
set of three	£12.00
Please write for details	

ORDER FORM OVERLEAF

P·E·N·I·N·E · L·I·N·K

Huddersfield Narrow Canal

West Side
Restoration Progress
October 1990



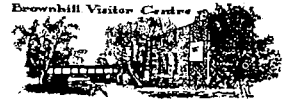
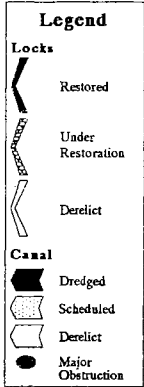
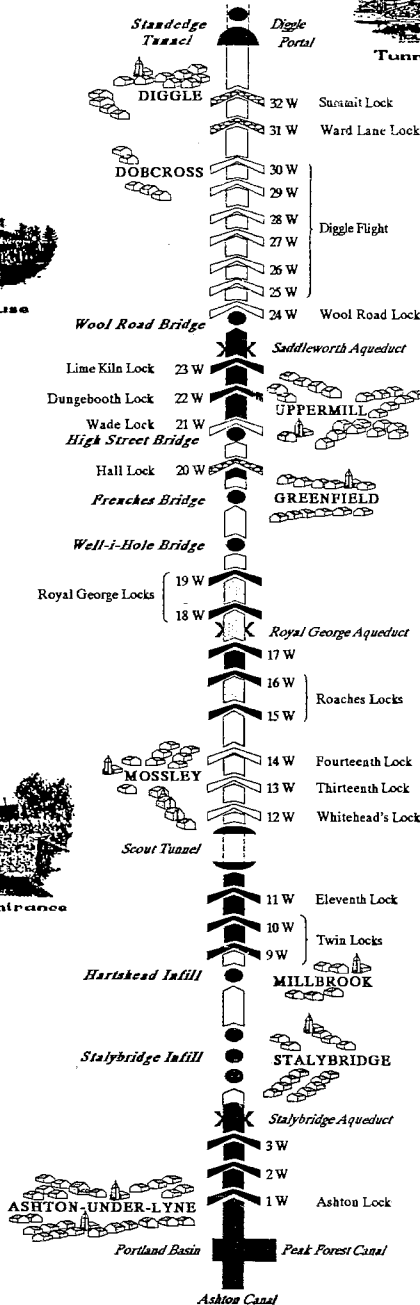
Wool Road Warehouse



Scout Tunnel Entrance



Tunnel Entrance



Brownhill Visitor Centre

KIRKLEES CANALS FESTIVAL 1990

I'm sure there must be a word to sum up one's feelings when one think's every-thing is going wrong. These were the committee's feelings at the fourth Kirklees Canals Festival, when in actual fact everything at the event was very favourable, including the weather.

The VIP cruise went without a hitch along the broad canal towards the Festival site – well, only one small problem – a spring mattress entwined around the propeller. This just happened to be dumped in the canal, only fifty yards from the Council's incinerator! But the crew of the Calder Lady, armed with cutters and pliers, managed to free the offending obstruction (watched by plenty of onlookers, or foremen). How we managed to reach Apsley Basin on time only higher forces can answer.

The opening ceremony was performed by our Patron, Viscount Lewisham and assisted by the Mayor of Kirklees, Councillor Tom O'Donovan.

Another humorous hiccup, on the Saturday, was that the Morris Dancers turned up at Tunnel End, but after a few phone calls they managed to dash down the Colne Valley to perform a spot, after threatening to sue us over 'Performing Rights' (well it felt like it at the time!).

For me the highlight of Saturday was the evening performance by Mikron Theatre Company. Never have I seen a performance when all the actors were on a par with each other, but this they achieved in 'Free for All'.

Sunday's events included brass and steel bands, juggler, craft stalls and exhibi-tions. We even provided a hot shower to one of B.W. staff – beat that!

The winner of the canal lamp was JOHN DEVENISH of Milnsbridge, whose house is adjacent to the restored section near the Four Horse Shoes Pub.

Festival Sponsors were:

REDLANDS AGGREGATES LTD.
K.G.S. (STONE SALES)
SCHOFIELD & SMITH (HUDDERSFIELD) LTD.
BROCKHOLES LTD.
THORNTON & ROSS LTD.
PEAK & PENNINE
HOLSETS ENGINEERING LTD.
ELON CROWTHER LTD.
SAGAR MARINE
D.W. FRANCO
KIRKLEES LEISURE
RAMSDENS LANDING
FRANZ ORTHODONTIA

MANY THANKS FOR YOUR SUPPORT!

IAN FRANCE, Festival Chairman



Due to Anno Domini, we have had to purchase a new engine for Boat No. 2 based at Marsden. This is now belting up and down the top pound at Marsden, giving life to the canal and making a few pennies for the Society. Anyone with small-boat experience willing to help this operation, contact Frank Smith, or Ian France at Tunnel End.

This is the only bright spot in the boat saga this month. Stan is now languishing at Mossley Road looking very forlorn after being sunk at Marsden. With an electric motor this total immersion was a total disaster. Whether the sinking was due to very bad weather, a leak or enemy action by the local vandal troop, I suppose we shall never know. However, Stan will be back in the water for next season but will probably operate in Mossley if we can find a safe mooring.

Benjie is up for sale. It will be advertised in the national waterways press shortly (but you saw it here first, folks). It is out of the water at BW's yard at Marsden for inspection by any potential purchaser. Historical boat, made of two front ends of Northwich-built boats, circa 1930, engine good (reconditioned one installed in 1989 and only just run in), solid fuel stove, pump-out toilet, sound 70ft hull. Propulsion gear is NAFF! Price - £12,000 ono. Go on - make us an offer!

We are now looking at designs for a purpose-built trip boat to operate at Marsden. This will have to be of the motor (small) and butty (large) variety because of the peculiarities of the operation on the top pound. We do have a divergence of opinion as to whether this should be a pull tow or a push (most of the BW tugs these days are made this way). If you have any strong views either way, drop Alwyn a line if you would like your views disseminated to a wider public, or to me for consideration at a Promotion Group meeting. (Come to the meeting if you like - the last in buys the beer).

BRIAN MINOR



*Stan No. 2
being removed
from Tunnel
End for repairs*

P·E·N·N·I·N·E · L·I·N·K

KNOW WHERE ITS AT with JAZZ TIMES

It's the only magazine for blow-by-blow coverage of the jazz scene nationwide, day by day. Who's playing where, when and for whom?

For six months subscription send only £4.
For FREE specimen and ratecard send letterhead

***JAZZ TIMES TELLS IT ALL!
JAZZ TIMES SEES IT ALL!***

10 Perry Road, Timperley, Altrincham,
Cheshire, WA15 7SU Tel: 061-980 1695

SOUTH PENNINES FARM AND COUNTRY ACCOMMODATIONS AND SELF-CATERING ACCOMMODATION

All Members of English Tourist Board and
the Farm Holiday Bureau

For Brochure, Ring
04574 66536 (evenings) or 045787 3040

Telephone: Glossop (04574) 66536 or 061-427 2377

~~~~SHIRE COTTAGE~~~~

*Bed and Breakfast
Prop: Monica Sidebottom*

BENCHES LANE, CHISWORTH
Opposite Woodheys Restaurant, Marple-Glossop Road (A626)

ACCOMMODATION?



No problem at Globe Farm!



We have Bed & Breakfast (with H & C)
Self-Catering Bunkhouse for 27 people with Showers and Drying Room
Camping •••• All at very reasonable rates

Contact:

Jean Mayall, Globe Farm, Huddersfield Road, Delph, Nr. Oldham
For details Telephone: 045787 3040 • Member H.C.S.

8.30 am, Friday, 28th December
Main Car Park, New Road, Kendal

In response to the Society's Christmas Appeal I am organising a sponsored walk, starting at the North end of Lancaster. The event will be held in conjunction with the Lancaster Canal Trust to raise much-needed funds for the canal.

The walk will be open to all members and friends who are fit and active walking enthusiasts and who may wish to attempt either the full 25-mile target or the shorter distance of 12 miles.

For further details and entry forms please contact:

Frank Hodson,
Toll Bar Cottage,
Underbarrow,
Kendal, Cumbria. LA8 8HP.

Tel: 0539 728280

QUALITY SELF-CATERING COUNTRY COTTAGE
ACCOMMODATION IN THE PENNINES

STATION COTTAGES

WEEKLY OR SHORT BREAKS

SORRY, NO PETS

TEL: 0457 875745

PAM BROADBENT, STATION COTTAGES, DIGGLE, SADDLEWORTH

P·E·N·N·I·N·E · L·I·N·K

Shire Cruisers



The Wharf
Sowerby Bridge
West Yorkshire HX6 2AG
Tel: Halifax (0422) 832712

The secret may not last.....

Explore Yorkshire's secret waterways now, before the re-opening of the Huddersfield Canal unleashes the ravaging hordes from the Midlands. With us you can reach the parts other hire boats can't get to: York and Ripon (almost); the Derwent and the Pockington; and we are waiting for the first crew to take a hire boat onto the Market Weighton Canal! Then there's Sheffield and Keadby – and you could reach the end of the Rufford Branch with a fortnight.....

Also, we now have two boats on the Rochdale – come and see how the competition are doing!

YORKSHIRE'S LARGEST HIRE FLEET

**TOP
LOCK
MARINE**



M.D. & A.M. Allcard

THE FOUR SEASONS RESTAURANT BOAT

Enjoy a cruise on board our traditionally styled narrow boat as we serve you with our home cooked meals

SUMMER SPRITE

Have a day out on our self-steer day boat, fully equipped with galley and toilet. Boat handling instruction given.

Top Lock House, 5 Lime Kiln Lane, Marple, Stockport; SK6 6BX

Tel: 061-427 5712

Dear Editor,

During our summer holidays in July this year, my family and I cruised the Cheshire Ring. We had also decided to have a 'go' at the recently re-opened first three locks of the lovely Huddersfield Canal.

As I have been a member of the Huddersfield Canal Society for some years I have looked forward to the day when I could sail my own boat up and over the Huddersfield. Here then is a short account of our journey from Ashton up to Lock number 3W.

Arriving at the new ASDA tunnel we were very impressed with what we found. Even more so to find it free of rubbish!

At lock number 1W we had no problems other than finding it a little slow. Unfortunately, at lock number 2W things were to change. Here we met our local firemen out on exercise. Just as well, as we could not move the gates back into the recesses. Seeing my problem they freely offered help and with two very long poles they were able to push the gates fully open.

By the time we had lifted the boat in the lock, a large crowd had gathered to watch the spectacle, most of whom were youngsters very keen to assist us. This turned out to be providential because outside the top end of lock number 2 was the H.C.S. mud hopper, drifting around. Without the youngsters' help we would have had great trouble overcoming this obstacle. However, with their assistance we were soon on our way to lock number 3W. All seemed to be going well when a young lad ran down from that direction to tell us that we would not be able to get through. The difficulty was that the lad couldn't tell us why we couldn't get through, so we decided to carry on sailing and make our own investigations. There seemed to be a lot of weeds about, but they didn't prevent our getting through, so we carried on.

Suddenly we came face to face with the

problem: the canal boater's nightmare – stop-planks, right behind the top gates of lock number 3W! So that was that – we didn't get to Stalybridge after all. As you can imagine, this was a great disappointment to us all. The sad thing is that we may not get another chance for some time to come.

Anyhow, our band of young followers, now grown even larger, was still willing to help us back, and that meant once again holding on to the mud hopper (still bereft of mooring ropes!) We half expected to see the local press waiting for us as we had the feeling that we might have been the only boat to come through that way for quite some time.

It was whilst we were turning around that we met Mr. Frank Smith, General Secretary of the Huddersfield Canal Society, who had been watching from nearby. He told us he was not aware that stop-planks had been fitted, and commented on our praiseworthy efforts to get the boat through, expressing the opinion that it was a great pity that more boaters will not make the effort, as this would emphasise the need for the powers-that-be to improve conditions to enable them to do so. I couldn't agree more!

Anyhow, that's a brief account of our attempt to reach Stalybridge. (My apologies to Frank for not knowing or acknowledging at the time that he is General Secretary!). The date of the sail was 24th July 1990 and the name of the boat is MISS GILLIAN.

PERRY WESTLAKE

33 Dawson St., Bury, Lancs. BL9 6LW

Well done Perry. You will receive a plaque when we get them made, and we do want more boats to make this trip. The canal is open and needs to be used. Ed.

**LETTER SENT TO
LINDA EDWARDS AS
'POINT OF CONTACT FOR HCS'
FURNESS VALE BOAT CLUB
Rose Queen Festival Rally 1990**

Dear Linda,

This year's Rally, despite the weather, was a success as an enjoyable event, judging from the comments we have since received. It was also a financial success, though only to a small degree.

Flushed with this success and enthusiasm we have put most of the money aside as a back-up for next year's event, but even so there is a small surplus for "local charities and voluntary organisations."

As initially you provided much needed advice and contacts for us, we wish to show recognition of this with a donation to the Huddersfield Canal Society, which we would like to make via yourself.

Please find enclosed a cheque for £25 made payable to H.C.S.

Many thanks,

LES WOOD

51 Peter Street, Hadfield, Hyde,
Cheshire, SK14 7HD.

Many thanks to Les and F.V.B.C. for this noble gesture. I personally thoroughly enjoyed the Rally and look forward to 1991. Ed.

THE EDITOR, PENNINE LINK:

Dear Alwyn,

May I be permitted to make a small correction to the article in P'Link No. 95 by Diane Calverley (page 7) on the Kirklees Festival, and put the record straight? (I always seem to be doing this).

Ashton does NOT have a ten year start on Kirklees. The first HCS festival was at the Poly site on September 24 & 25 in 1977.

The Committee was chaired by Derek Walker (who was to have taken over as chairman of HCS in 1978, but was unable to do so as his firm moved him to Birmingham); the Secretary was Peter Fryer, Bob Dewey was Site Officer and I was the Treasurer.

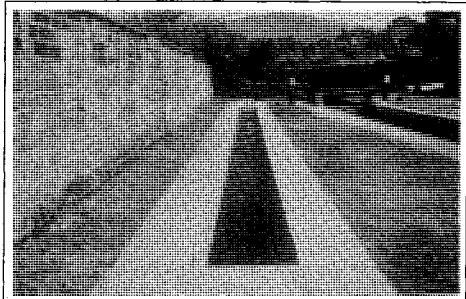
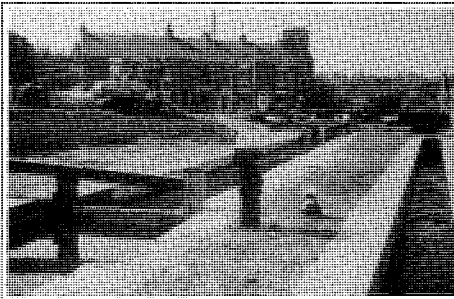
It was agreed that the next year (1978) the festival would be held at Ashton; this was the first HCS Ashton Festival.

The arrangement at this time was that we would hold festivals at Ashton and Huddersfield in alternate years, but due to the Poly site being unavailable the following year and the Ashton Festival being such a success, the 1979 one was also held at Ashton.

Regards,

J.K. MAYNARD

29 Thick Hollins Drive,
Meltham, Huddersfield



Lock 16 nearing completion • Lock 16 Bywash – Photos: Steve Whitby



The Inland Waterways Association

Dear Editor,

CHARITY BANK

Could I please appeal to your readers to send Green Shield (old and new), Co-op, Blue Chip, Pink, Look, Cash, Premier Gold, Super-save, Nationwide and all other types of trading stamps; Texaco, Gulf, Mobil, Shell, BP, Esso, Fina, Elf, Heron, Total, Burmah and all other types of petrol vouchers; Air Miles, cigarette coupons, silver foil, aluminium can ring pulls and all denominations of used postage stamps to the

WRG/IWA Charity Bank, 6 Spa Lane, Hinckley, Leics., LE10 1JB.

This is a permanent request which will continue indefinitely.

The Inland Waterways Association is a national charity campaigning for the multi-functional use of all Britain's inland waterways by fishermen, walkers, naturalists, boaters, etc. The Waterway Recovery Group carries out voluntary canal restoration work and runs canal camps for young people interested in working on renovation schemes and giving their free time to help others.

We turn the used stamps into cash and the petrol vouchers, etc., into goods for sale. We have raised £2,800 since August 1988 and aim to raise £1,500 every year this way.

We would be most grateful if your readers could make a note of our address and keep us regularly posted with all these.

Yours faithfully

DAVID STEVENSON
National Chairman

Head Office:

114 Regent's Park Road, London NW1 8UQ, Tel: 071-586 2510/2556

P·E·N·N·I·N·E · L·I·N·K

MAKE TRACKS TO THE STATION



What could be
more pleasant than
a fine lunch,
a superb pint
& good company
in our new
Conservatory
overlooking the garden?

WE'RE OPEN ALL AFTERNOON

*The Conservatory is bookable
for parties up to two dozen,
larger groups, up to 65, may book
our upstairs function suite.*

Ask for Menus.

*ONLY A SHORT
WALK FROM THE
HUDDERSFIELD NARROW!*



WARRINGTON ST., ASHTON - 330 6776

ASHTON'S PREMIER FREEHOUSE

No prizes – a little brain teaser to amuse you

This test does not measure your intelligence, your fluency with words and certainly not your mathematical ability. It will, however, give you some gauge of your mental flexibility and creativity. In the three years since the test was developed, few people could solve more than half the twenty-five questions in the first try. Many, however, report getting answers long after the test has been set aside, particularly at unexpected moments when their minds were relaxed, and some report solving questions over a period of several days.

INSTRUCTIONS:– Each question below contains the initial letters of words that will make it correct. Find the missing words.

Example:– 16 – O in the P. Answer: 16 Ounces in the Pound.

1. 26 L of the A
2. 7 – W of the W
3. 1001 – A N
4. 12 – S of Z
5. 54 – O in a D (with J)
6. 9 – P in the S S
7. 88 – P K
8. 13 S on the A F
9. 32 D F at which W F
10. 18 H on a G C
11. 90 D in a R A
12. 200 P for a P G in M
13. 7 S on a F P P
14. 3 – B M (S H T R)
15. 4 – Q in a G
16. 24 H in a D
17. 1 – W on a U
18. 5 D in a Z C
19. 57 H V
20. 11 P in a F T
21. 1000 – W that a P is W
22. 29 – D in F in a L Y
23. 64 – S on a C B
24. 40 – D and N' of the G F
25. 76 – T in the B P

APPLICATION TO BE ILL

This form must be submitted at least 21 days before the date you wish the illness to commence.

NAME: _____ DEPARTMENT _____

POSITION HELD _____

NATURE OF ILLNESS _____

DATE ON WHICH YOU WISH ILLNESS TO COMMENCE _____

Applications to suffer from pregnancy must be submitted 12 months prior and accompanied by form 38/24/36 PHEW.

CONSENT OF HUSBAND/WIFE _____

HAVE YOU EVER APPLIED TO SUFFER FROM THIS ILLNESS BEFORE _____

IF SO, GIVE DATE _____

DO YOU WISH THE ILLNESS TO BE SLIGHT/SEVERE/CRIPPLING/FATAL _____

IF FATAL, DO YOU WISH THIS TO BE CONSIDERED A PERMANENT DISABILITY _____

DO YOU WISH TO SUFFER THIS ILLNESS AT HOME/HOSPITAL/A MEDITER- RANEAN RESORT/DISNEYLAND/THE OLYMPIC STADIUM _____

DO YOU WISH THE ILLESS TO BE OF A CONTAGIOUS NATURE _____

IF SO, INDICATE THE APPROXIMATE NUMBER OF PEOPLE YOU WISH TO INFECT _____

HAVE YOU EVER BEEN REFUSED PERMISSION TO SUFFER FROM AN ILLNESS

IF SO, GIVE DETAILS _____

DO YOU WISH YOUR HUSBAND/WIFE TO BE INFORMED OF YOUR ILLNESS IF HE/SHE CONTACTS THE COMPANY REGARDING YOUR WHEREABOUTS _____

I, THE UNDERSIGNED, DECLARE THAT TO THE BEST OF MY KNOWLEDSGE THE ANSWERS GIVEN ABOVE ARE TRUE AND ACCURATE

SIGNED _____ DATE _____

Applicants are reminded that all applications will be considered on merit and that more than three applications per annum will be considered excessive, and not in the best interests of the company. Under no circumstances will any employee be permitted to suffer more than ONE fatal illness.

Greensleeves

CREATING A GOOD IMPRESSION

For all your
printing requirements

31 Water Street, Hyde,
Cheshire, SK14 1BD

061-366 5556

TUNNEL END CANAL & COUNTRYSIDE CENTRE



OPENING TIMES

Tue: 2 pm - 4 pm
Wed. & Thu: 11 am - 1 pm & 2 pm - 4 pm
Sat. & Sun: 10.30 am - 4 pm.

For details of activities, etc.

Tel: HUDDERSFIELD 846062

ADVERTISING RATES

	Per Issue	Per Six Issues
Quarter Page	£4.50	£22.50
Half Page	£8.25	£41.25
Full Page	£15.00	£75.00

NEXT PRESS DATE

Articles, letters, etc., for the
March/April issue of Pennine
Link should reach the editor
by Friday, 8th February

MIDDLEWICH NARROWBOATS

(WILLOW WREN KEARNS LTD.)
CANAL TERRACE
MIDDLEWICH, CHESHIRE, CW10 9BD

One day the Huddersfield Narrow will be restored and boating enthusiasts will flock to it. Until then, sample the delights of the rest of the area's canals by starting from Middlewich, the hub of the North West system - all the canals are within one week's cruise.

HIRE ONE OF OUR
TRADITIONAL STYLE
BOATS, 4 - 12 BERTH,
SOME WITH FULLY FITTED
BOATMAN'S CABINS (GROSS
BED, DROP TABLE, ETC.).
THEY HAVE ENCLOSED
ENGINE ROOMS, HAND-PAINTED
DECORATIONS
AND PLENTY OF BRASS
TO POLISH.

SEND FOR BROCHURE

TELEPHONE:
060 684 2460



"THE BOATER'S HIRE BASE"

THE SOCIETY WELCOMES THE FOLLOWING NEW MEMBERS:

- 1850 Mr. C.B. Turner, [REDACTED]
- 1851 Mr. J.R. Lomax, [REDACTED]
- 1852 Mr. & Mrs. R.C. & P.A. Haigh, [REDACTED]
- 1853 Mr. & Mrs. J. & A. Eyiers, [REDACTED]
- 1854 Mr. & Mrs. P. & D.M. Davies & Family, [REDACTED]
- 1855 Mr. H. Hargreaves, [REDACTED]
- 1856 Mr. & Mrs. K.A. & J.M. Hall, [REDACTED]
- 1857 Mr. B. Harrison, [REDACTED]
- 1858 Mr. & Mrs. T. & D. Glennie, [REDACTED]
- 1859 Mr. C.J. Malton, [REDACTED]
- 1860 Mrs. L. Ogborn, [REDACTED]
- 1861 Mr. N. Cotton, [REDACTED]

BACK NUMBERS

BACK NUMBERS AS FOLLOWS ARE AVAILABLE FREE FROM:
 John Maynard, 29 Thick Hollins Drive, Meltham, Yorkshire
 Please send an A5 size stamped, addressed envelope (27p)

Issue No.	No. in Stock	Issue No.	No. in Stock	Issue No.	No. in Stock
1	1	40	1	67	1
2	2	41	7	68	9
10	4	42	2	69	3
12	1	43	4	70	1
15	1	44	5	71	2
17	1	45	1	72	1
18	1	46	2	73	2
19	1	47	18	74	15
21	1	48	18	75	24
23	1	49	8	76	2
24	23	50	1	77	10
25	17	52	5	78	2
26	2	54	18	79	26
28	2	55	4	80	19
29	2	56	16	82	15
31	8	58	23	83	20
32	2	59	23	84	3
33	3	60	1	85	20
34	2	61	3	86	10
35	5	62	3	87	21
36	6	63	2	88	21
37	4	64	20	89	20
38	12	65	12	92	6
39	2	66	9	94	19

SPECIAL EVENTS -1991

EAST SIDE

WEST SIDE

Wed. Joint East/West Meeting at The Cross Keys Inn, Uppermill
Dec. 12 Lecture: "Belgian Canal Lifts, Old and New" - Trevor Ellis

Thu. Slide Presentation
Jan. 10 The Wheel, Golcar

Wed. General Meeting
Jan. 9 Railway Hotel, Greenfield

Thu. Report on Restoration
Feb. 14 The Wheel, Golcar

Wed. Lecture & Slides: "The
Feb. 13 River Witham and the
Fenland Drains" -
Lawrence Sullivan

Thu. Talk on boat-painting
Mar. 14 and/or-rope craft

Wed. General Meeting
Mar. 13 Cross Keys, Uppermill

Sun. Anderton Lift & Barton
Mar. 24 Swing Bridge

Thu. Inter-Society Quiz
Apr. 11 The Wheel, Golcar

Wed. "Magical Mystery Tour"
Apr. 10 Lecture & Slides -
John Greenway

Sun. Boat Trip - Leeds & Liver-
Apr. 21 pool - Bingley 5-Rise

Thu. Talk on boat-building
May 9 The Wheel, Golcar

Wed. General Meeting
May 8 Railway Hotel, Greenfield

Sun. Towpath Walk - West Side
May 19 Return by boat

Thu. Barbeque
June 13

Wed. Boat Trip for Members
June 12 Uppermill to Browhills

N.B. All meetings commence at 8.00 pm

The Sair
Cross Keys Inn
Tollemache Arms
The Wheel

Hoyle Ing., Linthwaite, Huddersfield
Church Lane, Uppermill, Saddleworth
Manchester Road, Mossley
Golcar, Huddersfield

