

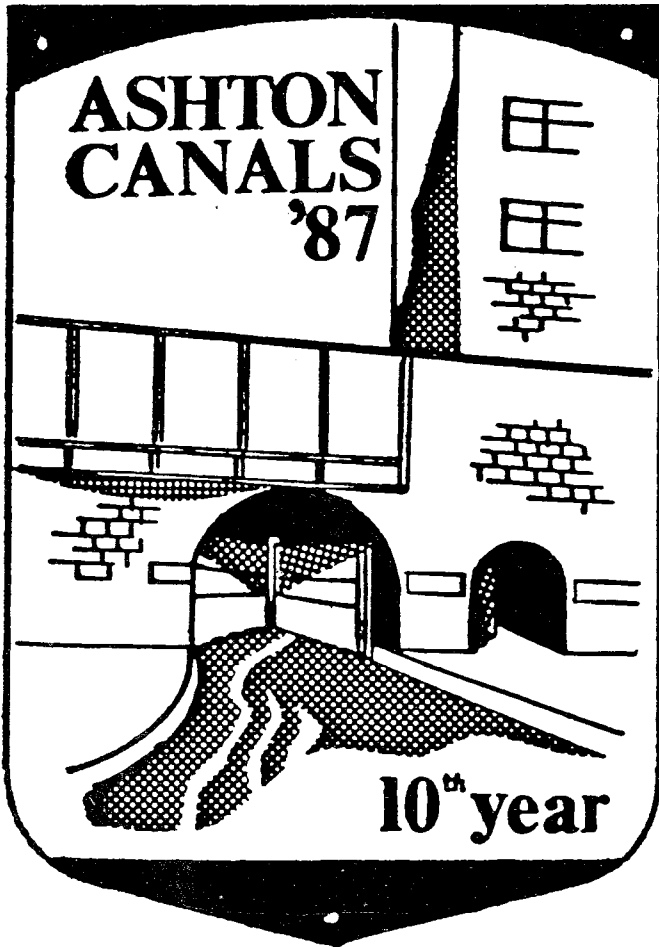


PENNINE LINK

No.76

July/August 1987

F
E
S
T
I
V
A
L



E
D
I
T
I
O
N

25p

Chairman	David Sumner	54 High Lea Road, New Mills, Stockport, Cheshire SK12 3DP. Tel: New Mills 45485
Vice-Chairman	Trevor Ellis	20 Batley Avenue, Marsh, Huddersfield, West Yorkshire HD1 4NA. Tel: Hudds 534666.
General Secretary	Robert Dewey	38 Paris Road, Scholes, Huddersfield, W. Yorkshire HD7 1UA. Holmfirth 685022.
Treasurer	Leslie Winnard	c/o Binder Hamlyn, Scottish Provident House, 52 Brown St, M/cr M2 2AU. Tel: 061-831 7121.
Sales Officer	Fiona Minor	263 Manchester Road, Mossley, Lancs. Tel: Mossley 6581.
Publicity Officer	David Wakefield	5 Southgate, Honley, Huddersfield HD7 2NT. Tel: (0484) 665588.
Editor	Sue Gibson	14 Simmondley New Road, Glossop, Derbys SK13 9LP. Glossop 64031.
Press Officer	Alec Ramsden	16 Edgemoor Rd, Honley, Huddersfield. Tel: Hudds 662246
Projects Officer	Keith Gibson	27 Penistone Rd, New Mill, Huddersfield, Tel: Holmfirth 681245
Boat Officer & East Side Chairman	John Morley	3 Wood Top, Old Mount Road, Marsden, Huddersfield. Tel: Hudds 846924.
Company Secretary	John Fryer	c/o Ramsdens, Ramsden Street, Huddersfield HD1 2TH.
West Side Chairman	Jack Carr	19 Sycamore Avenue, Euxton, Chorley, Lancs. Tel: Chorley 65786.
Festival Officer	Brian Minor	45 Gorton St, Peel Green, Eccles, Manchester. Tel: 061-789 4867.
Local Authority Nominees:	Garth Pratt Ken Goodwin Peter Scott Allen Brett John Sully	Chairman of IWA

Non-Council Posts

Membership Secretary	Mrs Val Dewey	38 Paris Road, Scholes, Huddersfield, W.Yorks HD7 1UA. Holmfirth 685022.
Press Cuttings Officer	Neil Frazer	84 Broomfield Road, Marsh, Huddersfield, W.Yorks HD1 4QD.
Stamp Officer	Brian Grant	Elland W.M.C., Roseberry Street, Elland, W.Yorkshire. Tel: Elland 70613 (home).
Boat Operator	Harold Nield	3 Grosvenor Square, Uppermill, Oldham. Tel: Saddleworth 3085.

Front Cover: plaque design by Dennis Taylor.

THE JOURNAL OF THE HUDDERSFIELD CANAL SOCIETY LTD.

ASHTON CANALS FESTIVAL

JULY 10th, 11th, 12th

- ★ Mystery Hyny ★
- ★ Sokhill Ukranian Dancers ★
- ★ Kashmir ★
- ★ Dan Dan the Punch & Judy Man ★
- ★ Uppermill Brass Band ★
- ★ Peter Ryder ★
- ★ Suitcase Circus ★
- ★ Camra Beer Tent ★
- ★ Kentucky Blue ★
- ★ Fiona Simpson ★
- ★ Mossley Dukes ★
- ★ Saddleworth Morris Man ★
- ★ Rough & Ready ★
- ★ Hot Spa Stompers ★

Side Stalls – Craft Stalls – Boat Trips

COME ALONG AND HAVE A GREAT WEEKEND OUT
BRING THE FAMILY

In the year when the Huddersfield Narrow Canal will be navigable from the junction with the Ashton Canal up to Stalybridge I wish Vince Willey and his committee success at the tenth canals festival at Portland Basin.

Ten years ago Peter Freeman chaired the first canals festival when the canal society was only three years old. We dreamed then of boating up the Narrow. It has taken ten years, but the wait and effort has been worthwhile. Restoration to Stalybridge was first envisaged as a joint Waterway Recovery Group/Huddersfield Canal Society project. The scheme undertaken is part of the Tameside Canals Ltd. works in the Tame Valley. We are grateful for the support of the Tameside Managing Agency and the Manpower Services Commission and for the full co-operation and financial support of British Waterways Board.

Whilst at the Festival I hope you all take the opportunity to visit the Huddersfield Narrow Locks 1-3 west and see the splendid work undertaken by our restoration subsidiary. I am particularly pleased that whilst restoring the canals in Tameside and improving the environ-

ment in the Tame Valley we have created hundreds of jobs and trained every one hundred and fifty hitherto unemployed persons for further employment.

I hope that our guests at the Festival including members of parliament and Mr. Stanley Clinton-Davis European Commissioner for Transport enjoy themselves and remember the reason for our jollities. I also hope that Society members will introduce themselves to our guests. We thank our many riparian MPs of all political colours, who have written to the Department of the Environment supporting our grant application for EEC monies for our Tameside and Oldham restoration schemes. The first MP to respond to our call for help was Mr Richard Wainwright. Richard's letter and reply is reproduced on page 8. The Society is proud to have Richard as one of our earliest members and we wish him well in his retirement from the House of Commons.

To those members who can attend the Festival enjoy yourselves! I shall, and one or two members will know where to find me.

Photographs for this issue of Pennine Link were kindly developed and printed by



Commercial & Portrait Photographers
UNION BANK ROAD, OFF NEW STREET, HUDDERSFIELD
Tel: Huddersfield 20775

PENNINE LINK

By courtesy of the Huddersfield Canal Society, this edition of Pennine Link is the Ashton Canals Festival Special.

The Festival starts on Friday night, 10th July (for anyone who wants to help, it starts on Thursday when we lay out the site) with a Folk Concert. Five artistes with top of the bill, Fiona Simpson, who was accorded several encores last year. The Saturday activities start with the Uppermill Brass Band followed by the antics of The Suitcase Circus, a young man with the funniest juggling act I have ever seen. The Sokhill Ukranian Dancers bring a touch of the Russian Steppes and a few palpitating moments with their Axe Dance. Mystery Hyny with their bag of tricks and fun for the kids (and the not so young judging by the audience reaction) will give two shows.

The Opening Ceremony will be performed at 3.00pm by Mr Stanley Clinton Davis, the European Commissioner for Transport, supported by the largest VIP party we have ever had. Four members of the European Parliament, two MPs, three Mayors, more than a dozen councillors and half the hierarchy of BWB are among the 70 guests.

Saturday night has the return of the Hot Spa Stompers who had us all stamping our feet last year. They will be supported by the Blues playing of Pete Ryder.

Sunday morning will open with our Sunday Service for Boaters. The Rev.

Ashton Canals Festival

Thomas can always guarantee that the weather is fine on Sunday morning — he has his own special hot line upstairs!

The Uppermill Brass Band will start the afternoon off but an entirely different sound will emanate from the Rock Band, Rough and Ready. The annual visit of our friends the Saddleworth Morris Men, is one that at least one young lady of my acquaintance regards as the high spot of the Festival! Mystery Hyny will once again please the kids and further entertainment will be provided by Dan-Dan and his Punch and Judy show.

The show will end at 5.30pm and the committee will collapse into little heaps along the towpath!

Anyone with time to spare on Monday morning, even if it is only for an hour or so, will be welcomed with open arms when we go about the herculean task of dismantling the site and restoring it to its pristine tranquillity for another twelve months.

The Final Word — this Festival is run for the benefit of the Huddersfield Narrow Canal. If you want to assist restoration in a practical manner, please volunteer your services during the weekend. You might end up thoroughly enjoying yourself.

More information, if required, from: Brian Minor, Ashton Canals Festival Committee, Publicity Officer, 45 Gorton Street, Peel Green, Eccles, Manchester M30 7LZ.

ACCOMMODATION?

No problem at Globe Farm!

We have:

Bed & Breakfast (with h & c) Self-Catering Bunkhouse for 27 people
with showers and drying room.

Camping All at very reasonable rates

Contact:

**Jean Mayall, Globe Farm, Huddersfield Road, Delph, Nr Oldham.
for details Tel: 04577 3040 Member H.C.S.**

Bates planning appeal (against the proposal to wall-in the ground floor of their building at Queen Street South, Huddersfield over the infilled section of canal) is to be heard at a public inquiry in Huddersfield on July 28th starting at 10am in the Town Hall. Local members are welcome to attend (and speak) but for most people a letter to the Inspector would be the best alternative and the Society would encourage you to do this. The letter need not be long or detailed but will show the Inquiry that the canal project is supported by a wide range of interests and people. We don't want to give you a 'standard' letter or petition to sign because those alternatives are viewed as less valuable than an individually thought-out statement. I have however been asked to suggest some of the points you may like to mention:

Restoration of the canal has been progressing for some time. Restoration is part of a national movement — successful results elsewhere. It will benefit my own particular interest (e.g.....) If the appeal is successful the project will be delayed — delaying the benefits to the area.

Address your letter to the:
Department of Environment,
Planning Inspectorate,
Tollgate House,
Houlton Street,
BRISTOL
BS2 9DJ.

Quote Reference: APP/J4715/A/86/
61239.

Please write to arrive before 21st July.

HOTEL BOATING ON THE HUDDERSFIELD NARROW?

Yes we hope to take Brackley onto the restored section to Stalybridge twice this year.

For details of our extensive 1987 cruising schedule and the 10% discount offered to HCS members (please quote membership no.), contact Martin and Debbie Rushbrooke now


Rushbrooke Narrow Boats


21 Bibbey Street
Rode Heath
Stoke-on-Trent
ST7 3RR
Tel (09363) 78652



Excavation at Lock 31W

Over the Bank Holiday weekend 23-25 May, we had a visit from our friends in the Waterway Recovery Group, giving us a sufficient workforce to tackle the excavation of the bridgehole at Lock 31W. Prior to the weekend itself this meant that we had to put a lot of work into diverting the stream which enters the tail of the Lock. There are two alternative culverts, the other passing over the canal in an iron trough, but unfortunately this route had become silted up over the winter. The two previous weekends saw part of the group working on this, some distance from the canal.

The actual Bank Holiday weekend saw a good turnout with very satisfactory progress; even better would have been achieved, apart from the need to pump out the lock chamber each morning due to the syphon we had arranged around the lock running off. In addition to clearing the silt, W.R.G. managed to dig out behind most of the coping stones on the lock ready for resetting. We still need some scaffolding before we can tackle this job properly.

Our future plans include completion of the walling at the lock tail; we were disappointed not to find more of the coping stones when we drained the Lock. Another weekend will have to be spent at some time clearing the last of the silt. However, at the moment we need to keep a causeway across the canal as a diversion for the towpath.

One area where we have been having problems is plant. During the work on the culvert, our 2" pump suffered a major engine catastrophe. We were already committed to a gearbox repair on the dumper, followed by a number of other jobs to the same vehicle, so the pump is at present in pieces. Although the 3" pump survived the weekend, (a major success in itself), we may also need to attend to that as the exhaust nearly blacked out Diggle.

Anyone is welcome to visit the site, either as a volunteer or simply to see for themselves. We are working on the following dates, starting at about 10 o'clock:—

4th/5th July, 18th/19th July,
1st/2nd August, 15th/16th August,
5th/6th September, 19th/20th Sept-
ember, 3rd/4th October, 17th/18th
October.

Please ring Trevor Ellis on Huddersfield 534666 for more details or to check what is happening on what date.

Trevor Ellis



*Silted up channel at tail of Lock 31W under Ward Lane.
photo: Bob Dewey*

Restoring the Canal through Slaithwaite

Now that Tameside Council have selected a route to rebuild the canal through Stalybridge, the spotlight has turned on to the other main filled-in length of the canal, through the centre of Slaithwaite. Although this part of the restoration plan is not expected to go ahead before 1991, residents have expressed concern about the effect it could have on the village.

As work on the Kirklees Council MSC scheme approached Slaithwaite it was obvious to local people that a route through the village centre had to be chosen. Local controversy, and in the newspaper correspondence columns, increased when MSC workers began work below Slaithwaite. Kirklees was accused of keeping people in the dark, but in fact, no detailed investigation of the alternative routes had been carried out. Now an assistant has been appointed to help Ian Preston the Principle Engineer responsible for the canal project and the alternatives are being studied.

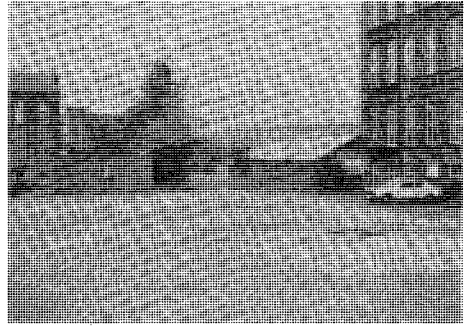
At the last meeting of the Council's Development and Technical Services (Canals) Sub-Committee it was decided to hold an exhibition in the public library at Slaithwaite from 6th July to 10th July, and to hold a public meeting at 7.30pm on 9th July in the Civic Hall. The three options to be shown are:

- * To reinstate the canal along its original route through Slaithwaite — perhaps at a lower level and with a narrower channel.

- * To use the original route but enclose it within a tunnel.

- * To by-pass the centre by using the River Colne.

See the exhibition. Let Kirkless know which alternative you prefer.



Site of Lock 22E

photos: Bob Dewey

Work seems to be progressing well, but there have been two slight hiccups.

Lock 28E (just below West Slaithwaite Road bridge) which had been capped, and was until recently the site of the worker's cabins was 'uncapped' to discover that the walls were in major need of rebuilding and have had to be demolished and rebuilt.

Dredger: Problems have been encountered in the use of the dredger which has prevented its use. Recently it looks as if this has been solved, being floated down the Marsden flight and now working below Lock 32E at Sparth.

Sparth: The first half (approx.) of the Marsden-Slaithwaite section has now been used. Work on the remainder is well advanced although Lock 24E (the first capped lock west of Slaithwaite) is untouched.



Kirklees' dredger at Sparth

Festival Sponsorship

Members of the HCS and other Pennine Link readers can hardly have failed to notice that the annual Ashton Canals Festival is upon us again, (the 10th this year) and by the time you read this, it is either imminent, happening, or all over. This year we have endeavoured to increase funds by sponsorship donations, and I am the person in charge of sending out the begging letters. I aim to use the boundary fences and walls etc. to display the advertising material of our sponsors, there is no fixed price per square foot, but the prominence of the advertising will reflect the generosity of the donation. Banks, Building Societies, Insurance Companies, High Street Multiples and large garage chains have been contacted as well as the smaller canal side firms etc. Response has been patchy but reasonably encouraging, and hopefully will increase over the years as the advertising idea catches on. That's the blurb, now for the crunch. If anybody out there is willing and able to contribute the odd doubloon or more, and would like to advertise products or services as explained above, please contact me: — Alwyn Ogborn at 92, Lane Head Road, Lees, Oldham. 'phone 061-624 0736. Any contribution however large or small will be most welcome, I hardly need to tell you it is for a most worthy cause. Cheques should be made payable to Ashton Canals Festival 1987, and all "non advertising" donations will be acknowledged in these pages. See you at the festival.

ALWYN OGBORN.

PHOTO MIXUP

Apologies for the confusion over photos in the last Pennine Link. Front cover was photo 3 (i.e. view at east end of new route).

Free Cruise on "Benjamin Outram"

To celebrate the recently opened extension of the Huddersfield Narrow Canal, HCS members and partners are invited on an evening cruise aboard "Benji".

Two cruises have been arranged, Wednesday 8th July and Thursday 16th July 1987. Both cast off at 8pm from the museum at Uppermill and will take passengers through Dungebooth and Lime Kiln Locks plus the previously infilled section, now restored and in water. Back at the museum for 9.15pm.

- NO CHARGE IS BEING MADE.
- YES, IT'S ENTIRELY FREE.
- HOWEVER, THERE WILL BE A BAR ON BOARD FOR YOUR CONVENIENCE (WHICH REGRETTABLY IS NOT FREE — ALL PAY)
- RAFFLE.
- MUSICIANS WITHIN OUR MEMBERSHIP WOULD BE PARTICULARLY WELCOME — ACCORDIAN, CONCERTINA, HARMONICA OR WHATEVER — Anything for a singalong.

To ensure your place on either of these trips, please phone Lily Nield on Saddleworth (04577) 3085 as soon as possible. Seating is limited to 48 each evening. When phoning, please have your membership number available.

Harold Nield

I dreamed death came the other night
 And Heavens gate swung wide.
 With kindly grace, an angel fair,
 Ushered me inside.
 And there to my astonishment
 Stood folk's I'd known on earth
 Some I'd judged and labelled
 As 'unfit', of 'little worth'
 Indignant words rose to my lips
 but never were set free
 For every face showed stunned surprise.
 No one expected me.

Anon

Dear Mr Sumner,
Thank you for your letter of 3 March. I find the December issue of Pennine Link particularly encouraging.

I enclose a copy of the letter which I have written to the Secretary of State for the Environment.

Please do not hesitate to continue to call on me if there is any help which you think I may be able to give.

Yours sincerely,
RICHARD WAINWRIGHT.

Rt. Hon. Nicholas Ridley, MP,

I refer to the Mersey Basin Initiative with which the Huddersfield Canal is closely involved. The Colne Valley Constituency contains a much longer section of this unique waterway than does any other Constituency. It has a very important relationship with the economic future of the Colne Valley.

As you know, the Huddersfield Canal Society has produced a five-year programme of further restoration of the Canal. A three-year plan derived from this has been submitted to you in respect of the funding of the Mersey Basin Initiative.

The Huddersfield Canal Society has done a great deal on an entirely voluntary basis towards the restoration of this waterway. They have built up a large and enthusiastic membership which has raised substantial funds for the restoration; it has acquired substantial funds from Local Authorities, the MSC, and the British Waterways Board. On top of this is a great deal of voluntary hard work on the physical restoration of the numerous locks and abandoned parts of the Canal. It has massive support in the local communities, especially because of the splendid opportunities the Canal holds for healthy recreation.

I believe that this Initiative should

receive a very substantial contribution from the European Regional Development Fund, and I am, therefore, asking you to consider pressing this, and considering any other sources of grant. It is most important that the momentum which has been assiduously achieved shall be kept up through a major programme.

I look forward to your observations.

RICHARD WAINWRIGHT

Dear Mr Wainwright,
Thank you for your letter of 5 March, addressed to Nicholas Ridley, about the work of the Huddersfield Canal Society and its relation to the Mersey Basin Campaign.

As you say, the Huddersfield Canal is closely involved with the Campaign. Part of the canal is located in the territory of the Basin (i.e. west of the Lancashire /Yorkshire border) and its waters eventually flow into the Mersey System. Also the hard work and enthusiasm of voluntary groups such as the Huddersfield Canal Society are becoming an increasingly important element of the Campaign effort as a whole.

You ask specifically about the possibility of European Regional Development Fund (ERDF) aid for the Society's restoration programme. Their initial bid has been received by the Department's Mersey Campaign Unit, which administers the Mersey Basin Programme. This is a phased programme of ERDF aid, and the society's bid will assist in making the next Mersey Basin Programme submission to Brussels for the period April 1987 to December 1990. From about the end of 1987, assuming the Brussels submission is successful, it will be necessary for the society to submit a detailed application providing justification for the various schemes in terms of economic benefits to the Assisted Areas arising from the canal-related tourism.

I hope the society will be able to make a good case: they will be aided in this by reference to the tourism strategy study for the Mersey Basin, commissioned by the Department, which is currently being prepared and will be available to all potential ERDF applicants.

I agree that there should certainly be important spin-off benefits flowing from all this to the whole of the canal and Colne Valley area generally.

Yours sincerely,
LORD SKELMERSDALE.



Diary of an Enthusiastic Mariner

Well, what about that? Somebody actually reads my articles — and I mean Somebody, not just anybody. HIS friend and colleague Keith Noble (of whom more later in the diary) no less. I'm sorry, Keith, that the mention in part 16 wasn't all you expected so how about this:— I CERTIFY that the West Yorkshire Waterway Guide (£1.95 + 40p p&p — no commission!) is not just an invaluable towpath guide but is clearly written also to help boaters and cyclists, as well as walkers.

To proceed — We are starting Day 4 of our October 1985 canal holiday, buried deep in blackberries and willow on the bank of the river at Wakefield. Just the three of us, plus William of course, having a whale of a time in new sorts of water.

Day 4 — Tuesday

Didn't get up until nine as we had decided to have a day off. No point in going much further as we would have to turn round at lunchtime and there isn't much v. interesting before Dewsbury. And I've never seen Wakefield properly although Ken has worked here over ten years.

Bolt broken on cabin door but will have to risk it — luckily boat is well hidden. Also hot water is playing up — only a trickle and soon runs out. Must be an air-lock but HE can't find it. Just another thing wrong with a boat, after a busy season. What with losing 3 hours a day because of daylight and the boat being battered at the end of the season I think we'll go for Easter again next time — and blow the leaves!



Walked into Wakefield — what a pleasant city. Made straight for the highly acclaimed Ridings Centre which must be one of the most (beautiful/gimmicky/gaudy/clever/stylish/hideous?) shopping centres I have seen. General view — terrific. Airy, a mixture of old and new with cast-iron work, reflective glass, perspex, trees growing, plenty of plants, running water into ponds with goldfish and Koi carp — even a “glass” outside lift (inside, if that makes sense) which when we tried it gave me the shivers with my fear of heights but gave a good view.

Unfortunately Cathedral closed due to an enthronement so couldn't look round. Some well-preserved Georgian terraces, good shops. Walked up to County Hall and Ken showed us the main Council Chamber (which is magnificent) and the ante-room with its superb Art Nouveau friezes and decoration (even to the electric light switch plates). The whole building is v. impressive and heaven help it and its staff next March when the County Council ceases to exist (I can still remember how scared we were for the future when I wrote that).

Went to Bishopgarth, the site of the old Bishop's palace, passing more beautiful Georgian streets on the way. Bishopgarth is now a Police Training School and also offices for the County Council, where Ken works. We delivered his postcard by hand(!) and also popped in to see Keith Noble to give him his guide book back with just a few comments in it (all in the cause of improvement — come to think of it he's probably still got it, I know I haven't!)

Chinese lunch at a nice restaurant then back to the Ridings for some food shopping and back to the boat. Saw some police frogmen exercising (I hope!) on the river. After Ken's sleep (!) walked to Thornes Park — v. pretty with lots of amenities and well looked after. Dinner (bacon sandwiches, following large lunch out!), long walk after and then back for an early start tomorrow.

Day 5 — Wednesday

2 swing bridges, 25 locks, 21 miles. Fox with some magpies seen on bank near Ferrybridge.

Could develop into a really nice day. Not much traffic again. Lovely combination of old and new aqueducts at Stanley Ferry. We have seen just the two Shire Cruisers on our outward journey; what a waste of good river and canal! Mechanical lock-keepers v. bright and helpful again. At one waited for a tanker to come out — good job we had roped up, there was a great deal of turbulence. Passed another coming in as we went out — strong steering required to keep away from it.

Open cast mining — fascinating to watch. Huge dumpers like ants swarming over the hillside. Passed under the M62 (or was it the M1). Terrifying how close lorry drivers keep to each other — no chance if one braked — much safer down here!

Made Leeds by 1.30, took on water again at Office Lock. Informative lock-keeper gave Sarah some useful tips on roping and paddle opening for 7'-0" wide boats in



The Old Aqueduct, Stanley Ferry, Wakefield

14'-0" locks. Took me back to 1980 when another lengthsman gave 14 year olds Simon and Simon the same lesson.

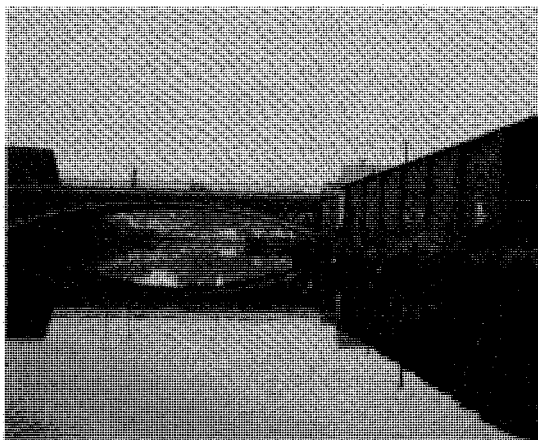
Saw a great deal of sun and it is constantly warm. Didn't wear my anorak once but new body warmer ideal for working in. Sarah and I did the single locks — some box paddles not working and others far too stiff for people of our weight (and strength, but don't tell HIM!). I took over the driving when we came to the flights of locks so that Ken could do the clever "degging and ladling" act. He didn't sit us on the bottom once nor drown a lock-gate. Sarah and I roped, by the time we got to Newlay we had got picking Ken up on the move off to a fine art. HE even praised us! (M.C.P.)

Moored up just beyond Newlay as darkness fell with a crash at 5.15. Dinner of steak and kidney pies, apple and mince roll and custard. Called in at the Abbey, beautiful pub, just for a quick one then back



to the boat — exhausted. It really is hard work for three people. Somebody had thrown fireworks on the deck whilst we were away which didn't please William at all. Great!

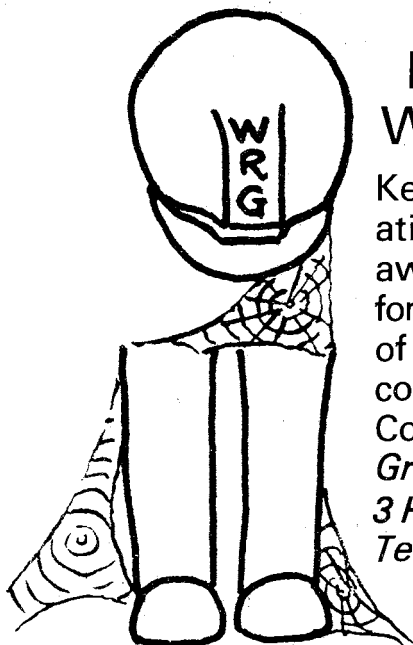
I'm feeling a bit sad. The next episode will be the last one for now. For all sorts of reasons we haven't been out since October 1985. So, dear reader (if I still have one apart from Keith Noble) see you next time — and bring your hankie!



The River Aire in Leeds

**PRESS DATE
1ST
AUGUST**

**ARTICLES FOR INCLUSION IN SEPT/
OCTOBER ISSUE TO BE WITH
EDITOR BY 1ST AUGUST PLEASE.**



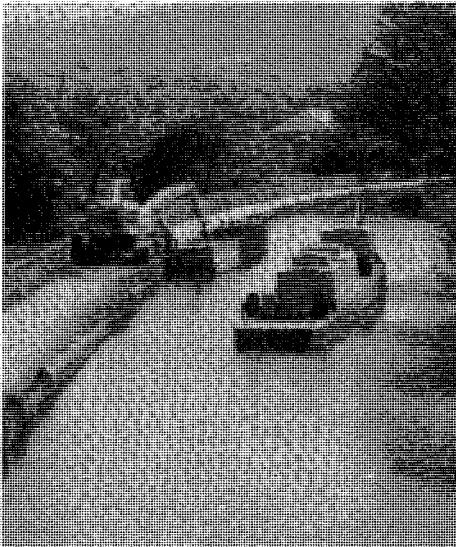
DUST DOWN YOUR WELLIES WITH WRG!

Keep your shovel in the Restoration Scheme by joining us on away digs. Monthly visits to Stratford-Montgomery Pocklington. Lots of fresh air, good food, convivial company.

Contact: *Waterway Recovery Group, Malcolm Bridge, 3 Heather Bank, Littleborough. Tel: 0706 78582*

On a cool, bright sunny morning in late May "Benji" cautiously entered the newly restored section at Dobcross with its first passengers of the day. The time was almost 12.30pm; the date 31st May 1987, and thoughts of 'will it get round that tight bend?' were openly being raised by a group of gongoozlers lounging on the parapet of Dobcross New Road bridge.

This exciting occasion, marking as it did the first passenger carrying narrowboat to reach Dobcross Basin, came and went all too quickly for we had prepared notices declaring our intentions and been bold enough to state a timetable. We therefore had to return immediately for the Basin at Uppermill.



BWB dredger 'Pollard' at work in Uppermill

Regrettably, Dobcross Wool Road Basin proper had been denied us since it had not yet been dredged. We could only drive as far as the underwater embankment which has kept the basin in water whilst maintaining a nominal passage of water through the new reinforced concrete section.



*Uppermill 'infill' section in water
photos: Bob Dewey*

British Waterways Board dredger 'Pollard' together with the work tug 'Aspull' are now on site at Uppermill with staff keeping us in suspense wondering which section they'll dredge next — Wool Road Basin or Dungebooth to Wade Lock? No doubt by the time you read this we shall all know the answer.

It can now be only a short time before 'Benji' proudly conveys passengers up to the historically important Trans-shipment Warehouse — winding at Wool Road Basin when the massive, straddling rouge willow tree has been cut down to size.

Three cruises were completed through the new section on that last day of May. It hardly seemed important that a mere eighteen passengers bothered to engage themselves in such a significant occasion. No doubt that as news spreads, response will snowball and we therefore look forward with confidence to a busy season. For the record, driving on the first trip was Jason Askew (16), Crew Ian Butters, on the bar was my wife Lily, and skipper and yours truly.

Harold Nield

President:

Mrs Barbara Castle MEP

Mossley Worsted Spinners

Mr R. S. Wilkinson

Mossley Civic Society

J.D. & S.M. Cook

Mockridge Labels of Ashton

O'Neill & Co. (Insurance Brokers)

Middleton

Ashton-Lyne Motors Ltd.

Grahams of Ashton

Wm. Monks

H. & J. Quick of Ashton

Alan Cunliffe (Wholesalers) Ltd.

Patrons:

Mr Glyn Ford MEP

Mr Tom Pendry MP

Rt. Hon. Robert Sheldon MP

Sponsors:

WCB Mailbox Limited

Radio Cars of Oldham

Jessops of Leicester

Nat-West Bank

Hoseasons Holidays

Counthill Dairies of Oldham

George Hill Timber Merchants

J. M. Jones Construction

Committee Chairman:

Vince Willey

The Huddersfield Canal Society Chairman David Sumner and the rest of the Huddersfield Canal Society Council wish Vince Willey, this years Festival Chairman, and his hard-working committee, every success with the 10th Ashton Canals Festival taking place at Portland Basin, Ashton, on 10th, 11th, and 12th July 1987. The proceeds will be put to good use, aiding the restoration on the West side of the Canal.

Festival Chairman's Welcome

Dear Reader,

I am not going to bore you with facts either historic or futuristic just to ask you to make a special effort and attend the 10th Ashton Canals Festival on the 10th, 11th and 12th July to see what 4 words can achieve i.e. commitment, co-operation, continuity and most of all enthusiasm — what we need is your approval — see you there.

VINCENT WILLEY,
Chairman ACF Committee '87.

ASHTON CANALS FESTIVAL 1987

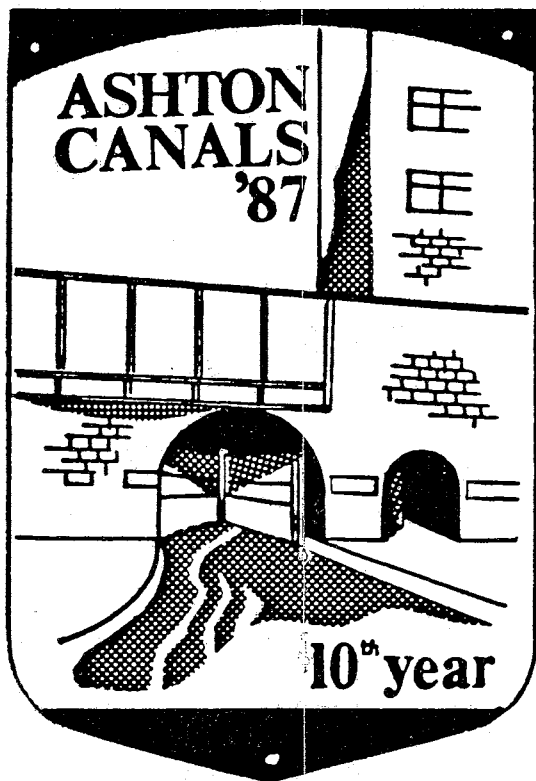
10th-11th-12th JULY

Programme of Events

Friday Evening

- 8.00 p.m. Kentucky Blue
- 8.40 p.m. Kashmir
- 9.20 p.m. Pete Ryder
- 10.10 p.m. Mossley Dukes
- 10.45 p.m. Fiona Simpson
- 11.30 p.m. Close

Admission: £1.00



Saturday Evening

- 8.00 p.m. Hot Spa Stompers supported by Pete Ryder
 - 11.00 p.m. Close
- Admission: £1.00

Saturday, Daytime

- 1.00 p.m. Suitcase Circus
- 1.20 p.m. Uppermill Brass Band
- 2.00 p.m. Mystery Hyny
- 2.30 p.m. Sokhill Ukranian Dancers
- 3.00 p.m. Official Opening Ceremony
- 3.15 p.m. Suitcase Circus
- 3.40 p.m. Uppermill Brass Band
- 4.20 p.m. Mystery Hyny
- 5.00 p.m. Close

Admission: 50p

25p child

Message from

Mrs Barbara Castle M.E.P.

Festival President

I am greatly looking forward to this year's Festival at which we will once again celebrate the excellent work done by the Huddersfield Canal Society and pledge ourselves to renew our efforts.

Come along and have a good time in a good cause!

BARBARA CASTLE.

Sunday, Daytime

- 12.00 noon Uppermill Brass Band
 - 12.45 p.m. Dan Dan the Punch and Judy Man
 - 1.15 p.m. Rough and Ready
 - 2.00 p.m. Saddleworth Morris Men
 - 2.30 p.m. Mystery Hyny
 - 3.00 p.m. Uppermill Brass Band
 - 3.45 p.m. Dan Dan the Punch and Judy Man
 - 4.15 p.m. Raffle Draw
 - 4.30 p.m. Mystery Hyny
 - 5.30 p.m. Close
- Admission: 50p
25p child

UNEMPLOYED?

TAMESIDE COMMUNITY PROGRAMME AGENCY

Gives help by providing up to 52 weeks work for the long-term unemployed.

INTERESTED?

Then contact us on
061-339 2122/3358

THE POWER CENTRE

TAW

**UNIT 2, WALK MILL, MARGARET STREET,
ASHTON-U-LYNE, LANCASHIRE**

Telephone: 061-344 0772

Telex: 668230

T. D. ANDREW (TAW) LTD.

Marine and Industrial Diesel Engineers

Society Meetings

I am pleased to report more members than ever are attending the social meetings. The bi-monthly East/West joint meetings are proving very popular. The slide presentation by the Calder & Hebble Society about the exploits of 'Doreen' in February at the Olive Branch in Marsden, and the talk by the Ribble Link Trust in April at the Cross Keys, Uppermill were both very well received. Dave Irving's marathon quiz at the June Meeting was hotly contested by teams from HCS, Rochdale Canal Society and the Calder & Hebble Society.

A further talk has been arranged for the 12th August joint East/West meeting, Mr Julian Hunt of the local interest centre in Oldham with a talk entitled 'Mr Edmond Buckley & Co. carriers on the Huddersfield Narrow Canal 1800-1845'. Instead of the more 'normal' subjects on canal history or restoration, this talk gives an insight into the people involved with the commercial and operational activities on the canal.

Don't forget the date:

Wednesday 12th August 1987, Cross Keys, Uppermill. Jack Carr

IT'S NEW IT'S EXCITING IT'S HERE The New HCS Tie

In Brand New Colours

Go on Girls — treat your husband and/or boy friend to one (or two!)

Lads — wear your tie with pride and show your support for your Canal.

Buy at this amazing price of
£5.95 inc. p&p

and don't forget that all profits (and we are hoping to make quite a lot) will go towards the restoration of your Canal.

Send now to: Fiona Minor
263 Manchester Road
Mossley, Lancs.

OL5 9AN

Cheques payable to: Loxvend Ltd.

Message from the Treasurer

Many employers are now operating a payroll giving scheme otherwise known as Give As You Earn. If your employer operates such a scheme, have you nominated the Society as a beneficiary? If so I would like to thank you on behalf of the Society. If your employer does not yet operate a scheme or you are an employer in your own right and would like details of the agencies approved by the Inland Revenue to administer the scheme please contact me.

LES WINNARD,
Treasurer.

Intrepid Birdwoman of Ashton CONTINUED

Most of you will remember that Fiona Minor, who was then Publicity Officer for the Ashton Canals Festival, proposed to make a sponsored parachute jump in aid of HCS. Many members pledged support including everyone attending the 1986 AGM.

Fiona successfully and triumphantly descended from 2,000ft last summer and the vast majority of sponsors have 'poppeyed up'. However, there are some characters — several of them members of WRG as well as HCS — whom Fiona has not yet been able to collar.

So, to finalise this account, could those of you who have guilty consciences, please send your money either to Fiona at:

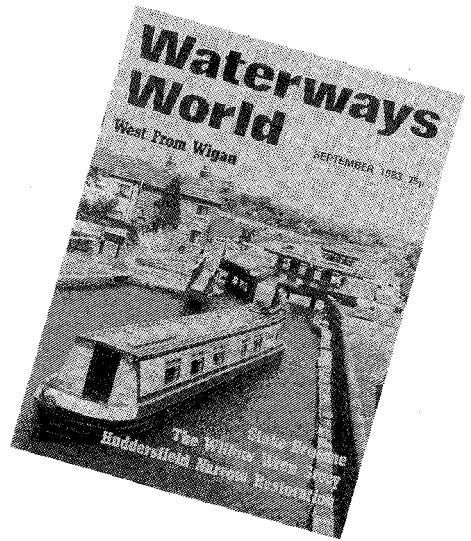
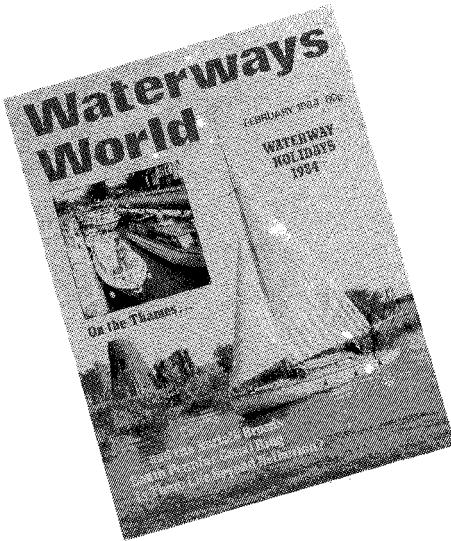
263 Manchester Road,
Mossley, Lancs.
OL5 9AN.

or to any Council Member.

As Fiona will shortly succeed Jean Buckley as Sales Officer for HCS, she will be appearing all over the place and making the lives of those slow payers a misery!

Until the Huddersfield Narrow's open again let
Waterways World

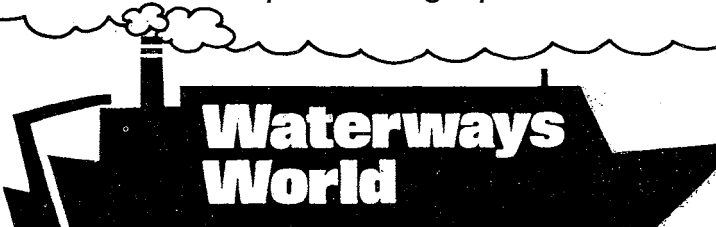
link you to the rest of the waterway's world!



The highest level in waterways reading for the highest level of waterway

**Waterway Productions Ltd., Kottingham House,
Dale Street, Burton-on-Trent, Staffs. DE14 3TD.**

Waterways World - *Your monthly towpath telegraph*



12/13 SEPTEMBER 1987 AT ASPLEY

In September 1986, The Canals Sub Committee of Kirklees Council asked officers to investigate the feasibility of staging an annual Canals Festival in association with the Huddersfield Canal Society to publicise the changing image of canals in Kirklees. Preliminary discussions between interested parties indicated sufficient enthusiasm and arrangements were soon underway.

Restoration of the Marsden-Slaithwaite section of the Narrow Canal by the Joint Restoration Scheme is now almost complete. 19 locks and 19 pounds have been excavated, with 6000 tonnes of concrete having been placed behind the new lock walls. 52 lock gates have been manufactured in the Schemes workshops, using 86 tonnes of oak. 4.2km of wash wall has been rebuilt or refurbished and 4.7km of towing path has now been relaid. 2.5km of the canal is now completely restored, with a further 1.7km nearing completion. The work is on schedule for an official opening of the canal from lock 24 to Marsden in September, hopefully during the week before the Festival.

The Council has also sponsored a considerable amount of other work on the Huddersfield Broad Canal (towing path/wash wall improvements) and the Calder and Hebble (particularly the Dewsbury arm which has undergone a complete 'environmental refurbishment'). Further work on 'eyesore sites' will be carried out over the forthcoming years.

The reasons for carrying out the improvements are many — employment generation, environmental improvement, increased leisure and recreational opportunities etc. However, once restored or improved, the public must be made

aware of the availability of this renewed resource, so that greater use can be made of it.

A basic step is to show people in an entertaining way that Canals are not only an important part of our heritage, but are there to be used and enjoyed by everyone and a Festival (as the Society already knows) is an ideal way to put the message across.

The event is to be held on land adjacent to the Polytechnic at Aspley, a particularly appropriate site. Aspley Wharf was, in its day, an important terminus and transshipment point for goods being transported by the Canal. The Warehouse, one of the earliest of its kind in the country, still stands by the canal-side, complete with loading crane. Lock No. 1 is located just a few hundred yards to the south, marking the beginning of the Narrow Canal. The Wharfe, Warehouse and Lock No. 1 are all listed as structures of Architectural or Historic importance.

It will comprise exhibitions by many canal societies, craft stalls, entertainments throughout the day (a different brass band will be there each day) and a boat rally. The Polytechnic bar on Level 1 will be open all afternoon, serving snacks and refreshments, and the new Baltimore Diner, overlooking Aspley Basin, is now open and easily accessible from the Festival Site.

The September/October issue of Pennine Link will have full details of the Festival arrangements, but if anyone would like further information (or would like to book a craft stall), please contact Eric at Kirklees Council, Directorate of Technical Services, Civic Centre, Huddersfield, telephone 0484 22133, extension 272.

JULY

North Stafford	Sat 4	The Horseshoe, Alcester Rd, South Kings Heath, Birmingham. 8.00**
Birmingham	Sun 5	Tividale Community Recreation Centre, Lower City Rd, Tividale, Warley. 8.00*
North Stratford	Mon 6	The Wharf Inn, Hockley Heath. 8.00 (<i>This performance is sponsored by the Stratford-upon-Avon Canal Society.</i>)
Grand Union	Wed 8	Cape of Good Hope, Cape Locks, Warwick. 8.00**
South Oxford	Thu 9	Napton Bridge Inn, Daventry Rd, Napton. 8.00**
	Fri 10	George and Dragon, Fenny Compton. 8.00* (<i>This performance is sponsored by the Warwickshire branch of the Inland Waterways Association.</i>)
	Sat 11	The Mill, Spiceball Park, Banbury. 8.00**
	Sun 12	Gt. Western Arms, Aynho. 8.00**
	Mon 13	Boat Inn, Thrupp, Nr Oxford. 8.00*
	Tue 14	Boat Inn, Thrupp, Nr Oxford. 8.00** (<i>This performance is sponsored by the Inland Waterways Association.</i>)
	Wed 15	Baker's Arms, Cardigan Street, Jericho, Oxford. 8.00** (A Jericho Festival event).
River Thames	Thu 16	Unicorn Theatre, Thames Walk, Abingdon. 8.00** (Real Ale Bar. Tel. enquiries Abingdon 22239)(<i>This performance is sponsored by Thames Water.</i>)
Kennet and Avon	Sat 18	Blake's Lock Museum, Gas Works Road, Reading. 3.00*
River Thames	Sun 19	The Ferry, Bridge Road, Cookham. 8.00* (<i>This performance is sponsored by Thames Water.</i>)
	Mon 20	Richmond Yacht Club, Eel Pie Island, Twickenham. 7.45 (Tel: 01-941 2271 for further details).
Lee Navigation	Thu 23	The Old Barge, 2 The Folly, Hertford. 8.00** (<i>This performance is sponsored by the Inland Waterways Association.</i>)
Wey and Arun	Fri 24	West Sussex area** For further details Tel: Tim Jolly of Wey & Arun Canal Trust. Horsham (0403) 67408.
Grand Union	Sat 25	British Waterways Leisure's Regent's Canal, Information Centre, Hampstead Road, Camden, London W1. 8.00**
	Sun 26	The Waterside Inn, Battlebridge Basin, 82 York Way, London N1. 8.00*
	Tue 28	Narrow Boat, St Peter's St., Islington, London N1. 8.00**
	Wed 29	Fisheries Inn, Coppermill Lane, Harefield. 8.00*
	Thu 30	Hemel Hempstead Arts Centre for Young People, Boxmoor Hall, St John's Road, Hemel Hempstead. 8.00**
Kennet and Avon	Fri 31	Wessex Wharf Show (in aid of MENCAP), Hilperton Wharf, Hammond Way, Trowbridge. 7.30* (<i>This performance is sponsored by the Kennet and Avon Navigation Co. Ltd.</i>)

KEY: * "The British Amazon" — the amazing true story of Mary Anne Tablot who during the 18th century was a drummer "boy", cabin "boy", powder monkey and actress and had many exciting adventures.

** "Flight of Fancy" — our brand new show, researched and written this year — one day in the life of a canalside community — a musical evocation of rural life in the 1930's.

PENNINE LINK

HIRE A TRADITIONAL STYLE NARROW BOAT FROM MIDDLEWICH

One day the Huddersfield Narrow will be restored and boating enthusiasts will flock to it. Until then, sample the delights of the rest of the area's canals by starting from Middlewich, the hub of the North-West system — all the canals are within one weeks' cruise.

Hire one of our traditional style boats. 4-12 berth, some with fully fitted boatman's cabins (cross bed, drop table, etc.) They have enclosed engine rooms, hand painted decorations and plenty of brass to polish.

Brochure from:



MIDDLEWICH NARROWBOATS
(WILLOW WREN KEARNS LTD)
CANAL TERRACE
MIDDLEWICH, CHESHIRE CW10 9BD
Telephones: Middlewich (060 684) 2460

"The Boater's Hire Base"

SOUTH PENNINES FARM AND COUNTRY ACCOMMODATIONS AND SELF-CATERING ACCOMMODATION.

All members of English Tourist Board and The Farm Holiday Bureau

For Brochure Ring:

04574 66536 EVENINGS or 04577 3040

PENNINE LINK Advertising Rates

per issue 6 issues

¼ page	£2.00	£10.00
½ page	£3.50	£17.50
full page	£6.50	£32.50

Classified Ads 5p per word

BOX No. 50p

DEEDS OF COVENANT

Those who wish to help the Society by paying your subscription under a Deed of Covenant, please write to the Treasurer (see inside front cover).

**PRESS DATE
1ST AUGUST**

Enjoy a warm country welcome! at The Diggle Hotel

Home cooked quality food our speciality. Mon.-Fri. 12 to 2 p.m.

Extensive bar meals every evening & Saturday lunchtime.

Sunday lunchtime specials include our famous
Steak and Kidney Pie. (Bring the family).

Hand pulled selection of beers

T. Taylors, Boddingtons, Oldham, Stella

Dig Lea Hamlet, Diggle 3 minutes from Uppermill Tel: 04577 2741



JOIN NOW

Your support is needed now. The more members we have, the more effective is our voice. Help to re-open the Huddersfield Narrow with your pen, your spade, your moral support or in any other way you have to offer.

To: The Membership Secretary, Huddersfield Canal Society, 38 Paris Road, Scholes, Holmfirth. Telephone: Holmfirth 685022

I/We wish to join the Huddersfield Canal Society.

Name/s

Address

Postcode Telephone:

Occupation

Amount enclosed £ Cheque/PO/Cash

I heard about the Society from

MEMBERSHIP RATES: Family Membership £3.50. Junior (under 18) £1.00.
Associate £5.00 (voluntary societies). Corporate £10.00 (minimum). Life £50.00.
If elected I/we agree to abide by the Memorandum and Articles of Association of the company.

Members receive free copies of 'Pennine Link', the society's bi-monthly magazine.



PENNINE LINK **Sonny's Cheshire Ring Holiday**

Day 5 ended with Sonny, boat and crew moored outside Harecastle Tunnel, in the pouring rain (hence no photos after day 5).

DAY 6 Dry, rain later

Sshh! In the early hours, the Tunnel gates were opened by a BWB man. My dog was still asleep and she got a lift through on board. It saved her legs 3 miles over the top along which I rode Sonny — sadly mostly metalled now. We were averaging 16 miles a day 12 miles some, 20 miles others. Tunnels and locks show the pace, and overall, we only manage about 2½mph.



*Day 2: 'Maria' just past Preston brook Tunnel.
photos: Sue Day*

We reached the site of the Stoke Garden Festival only to find that it had never occurred to the organisers that a boat horse might come. They had blocked off access to a bridge, and now Sonny had to use a temporary pedestrian bridge. It had the most awkward rightangled bends on it. I stripped Sonny's tackle off (the term used for boating harness) and he obligingly climbed the noisy plywood boards and wriggled round the bends. We were justly proud of our much-travelled horse. We then pushed on for Cheddleton, on the Caldon Canal. A wild, wet night. We phoned local farmers for a field for Sonny but could get no nearby help so resorted to tethering him at a distance from the boat where we felt he had more shelter.

DAY 7 Dry

We locked down onto the Churnet river, which has been canalised. The day before, boats had not been allowed on due to the floodwaters. We were lucky in our timing as we were working to a tight schedule. The river path was very muddy. I was ankle deep in squelching mud behind Sonny. The surface eventually improved and we guessed we were on

the territory usually worked by Badger of the Froghall Wharf passenger service. It was spectacular country scenery that we passed through. We arrived at Froghall and had to leave 'Maria' at the Froghall tunnel. Many boats, including ours, are too high to pass through. We walked Sonny the last leg of the journey to inspect Badger's quarters.

Bill and Jackie Young, the proprietors, have put in great efforts to create beautiful surroundings in what was once a canalside warehouse and wharf. The buildings house a cafe/restaurant too as a sideline. Over coffee, we swapped tales of horseboating and agreed to pass the two boats that afternoon for Badger was taking out a public trip that afternoon, and we would have to begin our return journey. Sonny was introduced over the stable door to Badger and in an ungentlemanly fashion, struck out with his foreleg. He was not having any other horse telling him how to go about boating! We watched Badger set off with his passengers on "Birdswood" and let them gain time whilst we had lunch. As we set off again, we were



*'Maria' enters Barnton Tunnel. Boathorse Lane can be seen between the trees. Day 3.
photo: Sue Day*

frantically trying to decide what procedure to follow when the 2 horses met on the towpath. Some of the crew argued that as "Birdswood" was working and was loaded, that we should give way to them, and sink our rope, so they could continue their passage unheeded. But others said that as our boat was unloaded, it was higher in the water and therefore should pass over their sunk rope and there would be a danger of "Birdswood" catching on our rope if we gave way to them. It was unprecedented modern horse boating history for our 2 boats to pass like this.

Just to add to the excitement of the situation, where we actually came across Badger was a "roving bridge". This is where the towpath crosses from one side of the canal to the other. The bridge is so designed that the rope does not need to be detached from the horse, but it is no fit place to meet another horse. We quickly decided to cross, and quickly trotted Sonny over. In a moment we were with Badger. Both horses obligingly passed each other quietly, "Birdswood" sinking its rope for us. Jackie and Bill met up with us that night, and over drinks in the pub at Cheddleton, we exchanged horse-boating tales.

DAY 8

We retraced our steps to the Harecastle Tunnel.

DAY 9

We made our way back onto the Cheshire Ring and the familiar territory for all of us of the Macclesfield Canal.

DAY 10

The last day was down our regular plying route of the Lower Peak Forest Canal from Marple. At lunch-time I washed Sonny and put on his horse-brasses. We arrived home at our boatyard on the Ashton Canal in style! We have collected brasses of all the canals Sonny has travelled on. They are modern reproductions which motor-boaters collect as souvenirs of the traditions of the canal.

I might add that motor-boaters dash for their cameras on seeing us, and are so intent on us that they often go aground or steer into banks etc! There are only about 10 operators nationwide of horse-drawn canal boats. This is because BWB will not issue licenced for horse-boats for private use and is very reluctant even on giving tripboat licences. It took much campaigning to get our licence. I do not know of any other boat horse which has travelled on holidays like Sonny in recent years. I am creating links with all the other horse boat operators, and if any readers require information on the subject, I would be happy to receive enquiries to: Sue Day, c/o Ashton Packet Boat Co., 26 Delamere Street, High Openshaw, Manchester M11 1JY. Tel: 061-301 2368.

**BE SMART
BE UP-TO-DATE
WITH A NEW
HCS
TIE**

**Air Force Blue
with Yellow Logo
Only £5.95 inc p&p**

OTHER SALES ITEMS

HCS Sweatshirts S/M/L in Grey, Red or Navy	£8.95	50p p&p
HCS Sweatshirts XL	£8.95	50p p&p
HCS T-Shirts S/M/L in White with Blue logo	£2.95	30p p&p
Standedge Tunnel Tea Towels	£1.75	25p p&p
Diggles (large soft and furry) 6" high	£1.00	25p p&p
Digglettes (smaller and furry) with 'I swam through Standedge Tunnel' labels	.35	S.A.E

Postcards

Tunnel End Postcards	10 for £1.00 inc.
Waterways Postcards — various	10 for £1.00 inc.
Black & White 'Narrowboat People' with red border 12 different designs	12 for £1.20 inc.

Plates

Small Lace Plates — flower design	£2.50	For details of postage write or telephone Fiona Minor
Large Lace Plates — flower design	£3.50	
Tunnel End Plates	£4.95	
Dungebooth Plates } Set of 3 — £12	£4.95	
Turnbridge Plates	£4.95	

Books

Ladybird Book of Canals	.75	18p p&p
Ashton Canal Book	£1.00	18p p&p
Huddersfield Narrow Towpath Guides	SNIP BUY £1.00	40p p&p
West Yorkshire Waterways Guide (spiral bound towpath guide)	this month only £1.95	40p p&p

SALES ORDER FORM

Please send me

Item	Qty	Cost & Postage
TOTAL		

Orders to Fiona Minor, 263 Manchester Road, Mossley OL5 9AN
Phone Mossley 6581
Cheques to LOXVEND LTD.

**NORTHERN
CONVEYANCING
GUARANTEES**

27a Shambles, York YO1 2LX York (0904) 52992

*Fast, efficient, personal service for buying and
selling all property (but not boats!)*

*Distance no object as all work can be carried out
by post or telephone. Please write or telephone us
for a copy of our brochure and a free written quotation*

Aspley Wharf Marina LTD.



HUDDERSFIELD

Good selection of speedboats, cabin cruisers and inflatables in stock.
**BOATS & OUTBOARDS WANTED ON BROKERAGE OR FOR
CASH**

Skis, wetsuits and full chandlery shop. Slipping facilities
available.

Ski Jackets, Buoyancy Aids, Mooring Available,
Chemical Disposal Point.

Picton Speedboats and Mariner Outboards Main Agents

Visit us soon at

Aspley Basin, Aspley, Huddersfield

Tel: (0484) 514123

Open 6 days per week. Closed Wednesdays

- 12th July, Sun. Early morning in Colne Valley 7-8 miles. Meet David Finnis at 3am at Tunnel End Canal and Countryside Centre, Marsden. Cooked breakfast available. Booking essential (0484 846062). Hard walk.
- 22nd July, Wed. Canal and Wood 5 miles. Meet Malcolm Banks at 7pm at Marsden Railway station. Medium walk.
- 26th July, Sun. Marsden Moor 13-14 miles. Meet Barbara Armstrong at 10am at Fall Lane roundabout, Marsden. Packed lunch required. Hard walk.
- 29th July, Wed. Milnsbridge 4-5 miles meander. Meet David Finnis at 7pm at Milnsbridge Canal Basin (opposite Four Horseshoes pub). Medium walk.
- 2nd August, Sun. Hand & Foot 11 miles. Meet David Wakefield at 10am at Bus station, Slaithwaite. Packed lunch required. Hard walk.
- 15th August, Sat. Standedge Trail 12 miles. Meet Peter Davies at 10am at Marsden Railway station. Packed lunch required. Hard/theme walk.
- 19th August, Wed. Canal and Park 5 miles. Meet David Finnis at 7pm at Charlie Brown's Longroyd Bridge, Huddersfield. Medium walk.
- 23rd August, Sun. Turnpike, Packhorse & Canal 10 miles. Meet Frank Cass at 10am at the Spinners Arms, Colne Bridge, Huddersfield. Hard/theme walk.

WOULD YOU PLEASE SEE THAT COUNTERFOILS AND MONIES FOR RAFFLE TICKETS BE RETURNED AS SOON AS POSSIBLE. THANK YOU.

Telephone: Glossop 66536 or 061-427 2377

SHIRE COTTAGE

BED & BREAKFAST

Prop: Monica Sidebottom

BENCHES LANE, CHISWORTH

opposite Woodheys Restaurant, Marple-Glossop Road (A626)

***Tunnel End
Canal &
Countryside
Centre***



Monday-Closed, Tuesday 2pm-5pm
Wed-Fri 11 am-1pm, 2pm-5pm
Sat & Sun 11am-5.15pm
& Bank Holidays

For details of Activities etc.
Tel: Huddersfield 846062

EXHIBITIONS

20th June-2nd Aug. Leather Goods by Ian Starkey Tatting by Margaret Starkey
Ian and Margaret will be demonstrating on Sundays during
exhibition period. Pressed flower pictures and cards by
Jackie Selwood.

8th Aug.-20th Sept. 'Spirit of Colne Valley' by Jerry Hardman-Jones and Tom
Wood. Ceramics by Mrs Crawford. Model Railways from
Huddersfield Railway Circle.

EVENING TALKS

16th July 'The Incas and the Andes' by Richard Brooker.

20th August 'The South Pennines' by Liz Pridmore, Project Officer of
S.C.O.P.A.

17th September 'Bird Life of the Colne Valley' by R.S.P.B.

15th October 'Update on the Huddersfield Narrow Canal Restoration' by
Ian Preston.

Talks start at 7.30pm but coffee is available from 7pm.

CONSERVATION DAYS

Your chance to help improve and enhance the environment in Colne Valley. Meet
10am Tunnel End. Old clothes and wet weather gear advised. Packed lunch
required. 4th and 5th July, 1st and 2nd August, 5th and 6th September.

UNCLE JOE'S MINT BALLS NOW IN STOCK

We are pleased to welcome the following new members:

- 1533 Mr Anthony Levy, [REDACTED]
- 1534 Mr and Mrs Philip Clifford, [REDACTED]
- 1535 Mr and Mrs John Gartside, [REDACTED]
[REDACTED].
- 1536 Ms Carys Ann Roberts, [REDACTED]
- 1537 Mr and Mrs John Woodcock, [REDACTED]
[REDACTED].
- 1538 Mr Andrew Mitchell, [REDACTED]
- 1539 Mr Robert Turkas, [REDACTED]
- 1540 Mr and Mrs Kevin Wadsworth, [REDACTED]
[REDACTED].
- 1541 Mr Bill McIlwaine, [REDACTED]
[REDACTED].
- 1542 Mr James W. Schofield, [REDACTED]
[REDACTED].
- 1543 Mr P. Harrison, [REDACTED]
- 1544 Mr J. D. Marsden, [REDACTED].
- 1545 Mr N. Priestley, [REDACTED].
- 1546 Mr C. N. Rolph & Miss M. E. Mather, [REDACTED]
[REDACTED].
- 1547 Ms A. Franklin, [REDACTED]
- 1548 Mr F. Hodgson, [REDACTED]
- 1549 Mr & Mrs Sykes and Joanna, [REDACTED]
- 1550 Mr B. Vardy, [REDACTED]
- 1551 Mr S. J. Parker, [REDACTED]
- 1552 Mr R. Williams, [REDACTED].
- 1553 Mr R. Barlow, [REDACTED]
[REDACTED].
- 1554 Mr N. J. S. Kehoe, [REDACTED]
- 1555 Rev. Dr C. J. Meek, [REDACTED] [REDACTED] [REDACTED].

MEETINGS

- 2nd July 8.00pm East Side Social Meeting at the 'Railway', Marsden.
8th July 8.00pm West Side Social Meeting at Farrars Arms, Grasscroft.
12th Aug 8.00pm Joint East/West Meeting. Talk to be given by Julian Hunt of the local interest centre, Oldham entitled 'Mr Edmond Buckley & Co. carriers on the Huddersfield Narrow Canal 1800-1845' at the Cross Keys, Uppermill.
3rd Sept 8.00pm East Side Social Meeting at the Sair, Linthwaite.
9th Sept 8.00pm West Side Social Meeting at the Tollemache Arms, Mossley.

FESTIVALS

- 10/11/12th July Ashton Canals Festival, Portland Basin, Ashton.
12/13th Sept Kirklees Canals Festival, Polytechnic Site, Aspley, Huddersfield.

Working Parties will take place on:—

- 4th/5th July, 18th/19th July,
1st/2nd August, 15th/16th August,
5th/6th September, 19th/20th September.
at Ward Lane, Diggle, after 10am.

Please phone Trevor Ellis on Huddersfield 534666, if you need any details.

IWA NATIONAL RALLY

29th-31st August 1987
Hawkesbury Junction, Coventry.

Look out for the HCS Stand.

EDITOR: The editor holds the right to edit or withhold articles and letters or to retain them for publication at a later date.

copyright Huddersfield Canal Society Ltd 1987

ARTICLES may be reproduced in allied magazines without prior reference providing the source is acknowledged.
The Diggles copyright Huddersfield Canal Society Ltd 1987

