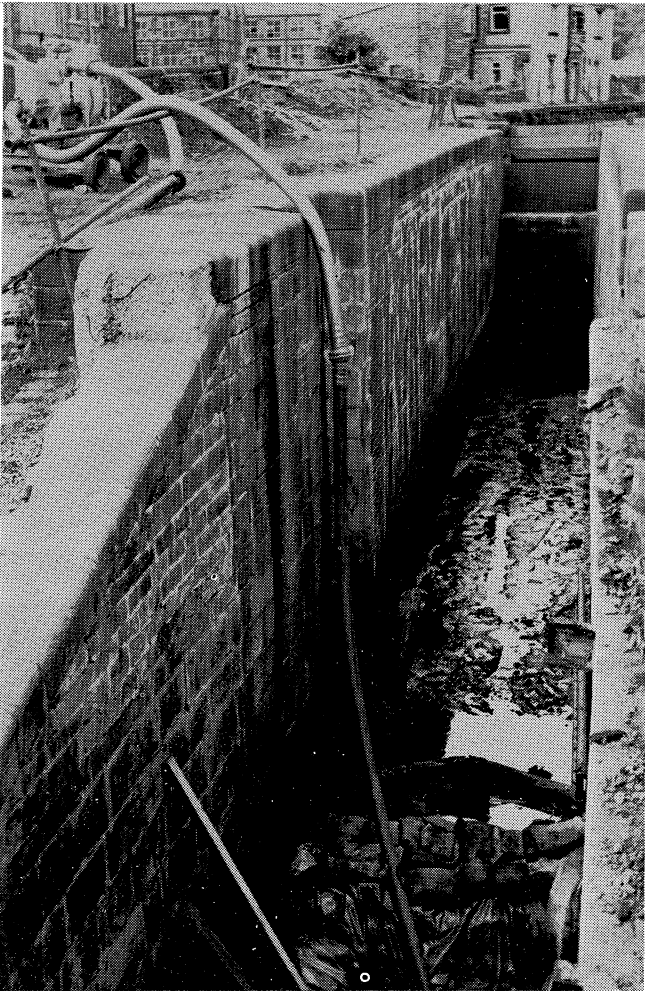


PENNINE LINK

No.59

September/October 1984



Chairman & Uppermill Project	David Sumner	54 High Lea Road, New Mills, Stockport SK12 3DP. Tel: Whaley Bridge 4611
Vice-Chairman & Marsden-Slaithwaite Project, Tunnel End Cottages	Trevor Ellis	20 Batley Ave, Marsh, Huddersfield. HD1 4NA. Tel: Hudds 34666
General Secretary	Robert Dewey	38 Paris Rd, Scholes, Huddersfield HD7 1UA. Holmfirth 685022
Treasurer	Mrs Susan Bradbury	15 Rowley Lane, Lepton, Huddersfield HD8 0JN. Tel: Hudds 60467
Sales Officer	Jean Buckley	37 Edward Street, Oldham OL9 7QT Tel: 061-624 4881
Publicity Officer	David Wakefield	60 Stile Common Road, Newsome, Huddersfield. Tel: Hudds 510781
Editor	Sue Gibson	14 Simmondley New Rd, Glossop. SK13 9LP. Tel: Glossop 64031
Uppermill Project Manager	Graham Maskell	19 Quick View, Mossley, Ashton-under-Lyne, Lancs OL5 9DU Tel: Mossley 3992
Boat Officer	John Maynard	29 Thick Hollins Drive, Meltham, Hudds HD7 3DL. Tel: Hudds 850575
Projects Officer	Keith Gibson	Northcote House, Neilds Rd, Slaithwaite, Huddersfield HD7 5HT. Tel: Hudds 844596
Festivals Officer	Mrs Hazel Maskell	19 Quick View, Mossley, Ashton-under-Lyne, Lancs OL5 9DU. Tel: Mossley 3992

non-council posts

Company Secretary	John Fryer	2 Popley Drive, Meltham, Huddersfield HD7 3LU
Membership Secretary	Mrs Val Dewey	38 Paris Rd, Scholes, Huddersfield. HD7 1UA. Tel: Holmfirth 685022
West Side Chairman	Jack Carr	19 Sycamore Ave, Euxton, Chorley, Lancs.
East Side Chairman	Dave Irving	416 Blackmoorfoot Road, Crosland Moor, Huddersfield HD4 5NP.
East Side Secretary	Mrs Anne Crosland	44 Marina Terrace, Golcar, Huddersfield HD7 4RA. Tel: Hudds 659748
Sheffield Branch	Joyce & Phil Calverley	25 Wulfric Rd, Eckington, Sheffield S31 9GE. Tel: Chesterfield 432140
Press Cuttings	Neil Frazer	84 Bloomfield Road, Marsh, Huddersfield HD1 4QD
Stamp Officer	Brian Grant	Elland WMC, Roseberry St, Elland.

Cover photo: Lock 39E after the concrete capping and most of the debris had been removed. A sandbag dam prevents water flowing in from below. Photo: K. Gibson.

The Journal of the Huddersfield Canal Society Ltd.

Council Members/Non-Council Posts	inside front cover
Editorial	1
Chairman's Remarks	2
Restoration News	4/7
Boats/Uppermill Progress	8
Ashton Canals Festival	9/10
Why HCS?	10
End of an Era?	12
Benjamin Outram	14
Tunnel End Reservoir	15/16
Tales of the Waterways	17/18
Mikron Theatre Company	19/20
Crossword No.19	20
Every picture tells a story	24/25
Cheer up your feet!	27
Sales List	inside back
Membership	inside back
Membership	back
Diary	back

editorial

It's now when the Summer activities and festivals are quietening down we at HCS are beginning to think of 1985.

As with any club or society you care to mention it's usually the same people, year after year who are around to organise these events, and usually are quite happy to get on with it.

Sometimes though, people would like to help out, but maybe it can only be for an odd hour or two, or the occasional weekend, and they feel uncertain about offering their help. We can always find jobs, whether it's manning the HCS stall, or collecting money at the festival gates, selling programmes running the boats or manning the Tunnel End Cottages, in fact the list is endless.

Please, if you think you can help, give myself or any other council member a ring and we'll see what we can fix up.

Sue Gibson

Ten years ago when Margaret Sinfield, Bob Dewey and John Maynard, formed the Society, they dreamed of the day when local authorities would actively begin to restore the Huddersfield Narrow Canal. Now, as a result of the efforts of West Yorkshire Metropolitan County Council and Kirklees Metropolitan District Council, with advice from British Waterways Board, and labour and funding from the Manpower Services Commissions' Community Programme, work has begun on the top locks at Marsden. Last September, when Yorkshire TV filmed the canal, it was hard to imagine no longer being able to walk down the cascaded lock 42. The official vandalism in the 60's and 70's, by a few authorities, helped preserve many of the lock structures, ready for restoration schemes. We have been able to persuade the authorities to undo the 'cocooning' on this three mile stretch, because our campaign has been supported by over 1,000 members.

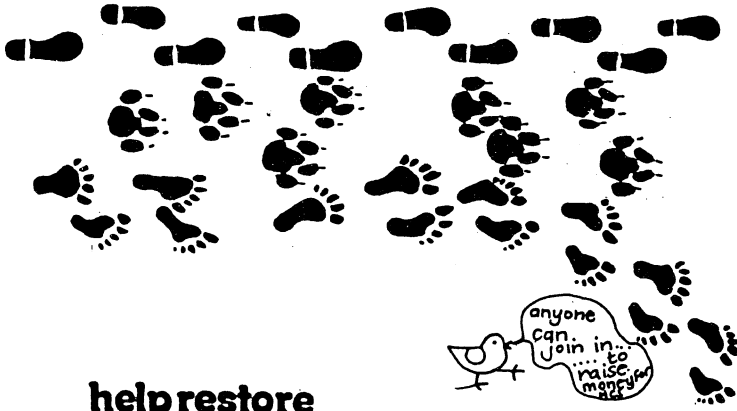
In this issue of Pennine Link, you will read of the progress being made in our various projects. But, we still have 16 miles and 51 locks to tackle, and we have to persuade other councils of the benefits to the environment, to the community, to the local economy, of a restored waterway. To be an effective pressure group, we need strong membership, and new blood. This month we have a new Press & Publicity Officer, David Wakefield, to replace David Finnis who has joined Colne Valley Ranger Service. David Wakefield will assemble a team around him to spread the word. There are other facets of our organisation that would benefit from team-work. We need you. If you feel able to support your Council, in anyway whatever, let us know.

The next two years will possibly see a major change in local government along the Huddersfield Narrow. We have been fortunate in having the support of two Metropolitan County Councils. Their continued support is most welcome, particularly at a time when British Waterways Board must be convinced of the worth of a restored canal, and of the support from local authorities. We welcome Sir Leslie Young as the new Chairman of British Waterways Board, and trust that he recognises the wishes of our 1,000 members, and the interest in our canal by the riparian local authorities. The Huddersfield Narrow Canal, like the Montgomery Canal **will** prove a positive Cost Benefit, to restore. In the next few months we hope to be able to prove this to all interested parties.

David M. Sumner

STOP PRESS STOP PRESS STOP PRESS STOP PRESS

HCS's Pennine Link wins Narrow Boat Magazine Trophy and £100 for Society funds.



help restore

huddersfield narrow canal

join a sponsored walk

Please contact:

ALISON FISHER
46 Woods Ave,
Marsden.
Tel: (0484) 842963
Work: 061-620 4421



**sunday
october
7th**

On 11th July Greater Manchester Council's Planning Committee decided that the Council should state its intention of re-opening both the Huddersfield Narrow and Rochdale Canals over a 10-15 year rolling programme. That is subject to ratification by the Council. Although this decision does little for the immediate prospects for restoration it must be lauded. It sets the scene against which political decisions affecting the canal's future will be made. It is increasingly certain that the Government will proceed with its declared intention of abolishing the County Councils. My main concern is to what extent the County Council's decision will commit Oldham & Tameside Councils with threats of Rate Capping and strict limitation of budgets, in the future.

The report that was considered by the Planning Committee included costings for restoring both the Rochdale & Huddersfield Narrow Canals, based I believe on estimated contractor's costs. These gave us cause for concern because we felt that the figures for "our" canal were at least twice the likely actual cost. They did not show the dramatic reduction in cost which can be achieved by the use of Manpower Services Commission schemes, and plumped for the "expensive" choice of canalising the River Tame in Stalybridge rather than investigating the possibility of restoring the original line through the town. Your Council has been talking to the engineering consultants W. S. Atkins & Partners, who produced the successful Cost Benefit Study recommending restoration of the Montgomery Canal. They have given help in arriving at what we believe is a more realistic costing of the restoration of the canal in Greater Manchester. We have forwarded this to the Council.



Dredging the pound between Locks 38 and 39 East. A view from the bridge at Warehouse Mill looking towards Lock 38E.

The Kirklees/West Yorkshire Council's M.S.C. sponsored Community Programme scheme to restore the canal between Marsden & Slaithwaite continues to make good progress under project engineer Ian Preston. The position at the time of writing is:

Lock 42 East: Work has begun on breaking up the concrete cascade over the material filling in the lock chamber. The pound below is drained and a ramp is being formed to allow dumper access into the canal bed above lock 41E.

Lock 41 East: The byewash has been cleared. The concrete cascade has been broken up and removed and the lock chamber emptied of infill material to display brick and stone walls partly demolished at the top. The stone copings from the top of the lock have been recovered from where they had been tipped in the lock and are stored for re-use alongside. The pound below has been dredged using hired plant to load into dumpers which were taken into the canal bed via a temporary access track leading down from the head of lock 40. This track is now being removed. The retaining wall on the offside bank is being rebuilt.

Lock 40 East: The concrete cascade has been removed but the spoil remains in the lock chamber. Overgrowing trees have been lopped in the pound below and the soil cut back at the banks to expose the coping stones.

Lock 39 East: The concrete cap has been removed from the lock chamber and the byewash cleared. Debris has been removed from the lock chamber which now sports a polythene roof to allow pointing to take place under cover. The pound below has been dredged and the coping stones cleared of overgrowing vegetation. The drystone wall behind the towpath is being rebuilt.

Lock 38 East: The concrete cascade has been partly broken up.

Lock 37 East: The byewash has been cleared and repairs commenced.

A huge quantity of old dredgings have been removed from the tip site off Warehouse Hill, Marsden and taken to the disused household refuse tipping site off Manchester Road where it will be used as topsoil to restore the site. This has increased the capacity of the old dredgings tipping site to take the material now being removed from the canal. The workshop at Spring Grove Mills, Linthwaite has been prepared to begin producing lockgates. Ian Preston has his office there.

The second Community Programme scheme on which we are involved continues with towpath improvements on the Peak Forest Canal in Hyde. Although not on "Our" canal, this scheme, managed under an Agency agreement by Tameside Council and being carried out by the Tameside Canals Development Association in which we are involved with the Peak Forest Canal Society, could (we hope) lead to restoration on the Huddersfield Narrow in Tameside. The Chairman of the Association, Tameside Councillor Frank Ruffley and Manager, Steve Whitby are, no doubt, pleased at the progress made so far. The scheme now has two work boats and we are to lend ours used on the Uppermill project.

Talking of the Uppermill project leads to the topic of restoration by volunteers. We have been criticised for not making provision for a voluntary scheme to follow the restoration of Dungebooth & Limekiln Locks. If only it were so easy! The canal is a Remainder Waterway and under the terms of the 1968 Transport Act the British Waterways Board can only spend such money as is necessary to maintain it at that level. The additional costs of maintaining a restored canal have to come from the Local Authorities. We seem unlikely to persuade any of the Local Authorities to agree again to finance a purely volunteer scheme. They would prefer to see some element of job creation through M.S.C. involvement in any restoration project. So why not start other Community Programme schemes associated with a volunteer project? Again, not so easy. The Waterways Board have an agreement with their Unions regarding the number of M.S.C. places nationally. This has tied our hands in getting other schemes started.

There are, however, certain parts of the canal not owned by the Waterways Board. We had thought that a project to restore Locks 1 & 2 East in Huddersfield (Lock 1 is owned by the Polytechnic) may be a starter. It has been decided, however, to include this in the Kirklees/West Yorkshire M.S.C. scheme. Locks 31 & 32 West at Diggle are owned by Oldham Council. We have asked their permission to restore them. I believe that permission is likely to be given. I certainly hope so — I have a dumper in my garage! Until a decision is arrived at Graham Maskell is to arrange visiting working parties on other canals.



Lock 40E with a temporary bridge over the forebay, and a dumper reversing up the temporary access from the canal bed.



Lock 41E after the removal of the concrete cascade but still before the removal of the infill material from the lock chamber. The bywash is cleared and work has begun in the pound below. The excavator is finishing building a temporary dumper access into the bed of the canal prior to dredging duties.

photos: K. Gibson

Progress on the Ashton-Stalybridge project continues slowly. This scheme, suggested in a joint report by ourselves and the Waterway Recovery Group, has been accepted in principle by the Greater Manchester Council. There is little we can do to help the Council at this stage. We understand that their Planners are negotiating to obtain grant-aid for the project. Similarly there is no progress to report in this issue regarding the discussions between the various Councils and the Waterways Board regarding the proposed survey of the maintenance works required to re-open the Standedge Tunnel. Don't despair about the slow progress on these schemes, or about the similar speed of progress in our discussions with Oldham Council regarding the canal in Saddleworth. These things take time, and if the Planning Officer's of these Council's are as busy as ones I know in my own office, the fact is that they probably have so many other matters to deal with that they can only spend a limited amount of time on what is to us so vital. It's no good shouting and complaining to the Council's officers. Government inspired cuts have dramatically reduced their Planning staffs — and this could get worse with the demise of the Counties.

Your Council have various ideas to try to bring these schemes and others to a speedier conclusion. More later — I hope!!

Keith Gibson

STAN. Was transported safely from Aspley to Slaithwaite for the Colne Valley Festival where she is now moored. Unfortunately she was not able to attend the Ashton Festival. The next move is back to Marsden where some remedial work is required due to a break-in.

BENJAMIN OUTRAM. The engine now seems to be running O.K. except for one or two minor problems, but thanks to our stand-by mechanic arrangements these have caused minimum delays in running trips. We took her out of the water on stop-planks to examine the steering and all seems O.K. She is still being run by volunteer members of the society at weekends and a rota has been got out for dates up to the end of October. However the demand for trips during the week is evident and the demand for charter trips at other times than weekends. It was found impossible to run these with volunteers so an arrangement has been made with Harold Neild — who lives close to the canal at Uppermill — to run the boat during the week on our behalf. Anyone who is interested in chartering should contact Harold direct on Saddleworth 3085 (see page 13). The more charter trips we can get the better, as not only must we pay for the overhaul of the engine but we still need to make enough money while the summer lasts to pay off at least a proportion of the cost of the boat this year.

Finally, Granada TV are proposing to do a programme on the canal featuring Benji on the 2nd August.

John Maynard

uppermill progress

Our work in Uppermill is now completed and, as seen in the last edition of Pennine Link was officially opened with due ceremony in May. Since then our postponed plant overhaul has got under way. We are also on the lookout for plant of a suitable nature for future digs (anyone who knows of a surplus KL15 crane please let me know) and we are in the process of buying a 15cwt dumper, many thanks to Wheelton Boat Club for assisting us in this matter.

There are however no dates for working parties on the canal at present, so we have arranged a weekend on the "Stratford Blitz" which is running from November 1984 until March 1985, the date for our visit is December 15th/16th. Transport and accommodation are all arranged and if there is sufficient interest no doubt another visit will be arranged for early next year. I think this will be a good opportunity to get out and make contact with other working groups and assist in a very worthwhile scheme. Further details, as they become known, from me. I am hoping for at least a dozen volunteers for this weekend. Please make a note in your diaries. More importantly **contact me**. Don't leave it up to the same old faces.

Graham Maskell

press date

Articles for inclusion in the Nov/Dec issue of Pennine Link must be received no later than 1st October.

With all the other festivals and similar events going on this year, I was secretly hoping that the 1984 festival would be a slightly smaller affair. No such luck! It was just as big and just as successful as in previous years. It was also a credit to the hard working committee, many of whom were doing the job for the first time. Frequent outbreaks of rain threatened to spoil everything but despite this the event ran remarkably smoothly.

For the organisers, it all started on Thursday morning with the arrival of the CAMRA beer. This was followed by a seemingly endless procession of bits and pieces over Thursday and Friday. I would point out here that everything has to be carried some distance to the main site as there is no direct road access.

On Saturday we got our taste of the rain. Fortunately it was only brief showers during the afternoon but by evening it had become quite heavy. Many people though braved the weather and crammed into the small entertainments tent to make it a most enjoyable evening.

The rain provided a pretty miserable start to the proceedings on Sunday. I was heartened by the sight of several boats making their way up the Huddersfield Arm (and coming back!). It brightened up during the afternoon and the crowds flocked in. The height of the events for me was watching the local fire service demonstrating their telescopic ladder. At one point it was stretched across the canal and the fireman on the end was shaking hands with the boaters. Was he trying to get in without paying? Anyway he got an HCS sticker on his helmet.



At the end of the day we began the familiar clear up operation, and within a matter of hours the site was empty.

So ended another festival. After several years of working on the committee, for me the actual event seems to pass far too quickly these days. In fact there is already discussion about the 1985 festival. This is where I make myself scarce!

Laurence Sullivan

ASHTON CANALS FESTIVAL — Raffle Winners

1st — Ian Turner, East Didsbury	12951
2nd — Julie Brennon, London	19741
3rd — Mr Brown, Stockport	4741
4th — P. Shaw, Ashton	0072
5th — S. Sim, Wigan	22060
6th — D. Ashton, Dukinfield	13737

why HCS?

I am a student in my final year at college and have a thesis to write. As a member of H.C.S. I want to do my bit about spreading the good word and have chosen the society as my subject! As part of my research I want to enquire into why people get involved in causes such as ours. I'm afraid I can't afford to send stamps to all of you (over 1,000!) but if any members would like to help me by answering the following questions I would be very grateful.

1. How long have you been a member of H.C.S.?
2. How did you hear about the society?
3. Why did you join? Have your motives changed since then and if so, why?
4. Do you belong to any other restoration or conservation organisation?
5. Why do you feel that restoration of the Huddersfield Narrow Canal is important?
6. Do you live in an area which will benefit by restoration of the canal?

Please send your answers, plus any comments you may care to make, to ALEX CRIPPA, 4 Monmouth Street, Werneth, Oldham, Lancs. OL9 7RI.

Thank you very much.

classified ads

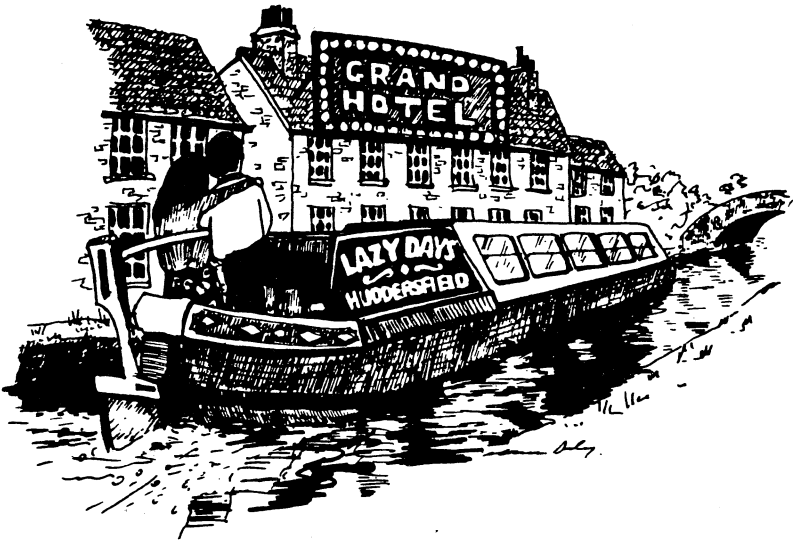
The Witters of Chester support restoration of the Huddersfield Canal — and would like all Diggles to know that at their canalside factories they make very good canoes, paddles, helmets and trailer towing brackets.

press cuttings

If you see anything mentioning the Huddersfield Canal or the Society in newspapers, magazines, etc., please could you cut out and send to Neil Frazer, 84 Broomfield Road, Marsh, Huddersfield.

PENNINE LINK

Cast off with
ROBINSONS CRUISERS - - -
DEWSBURY



- - - AND TAKE YOUR
HOLIDAY HOME
WITH YOU!

SAVILE TOWN, DEWSBURY
Telephone: Dewsbury 467976

*Carefree comfortable canalling
at its enjoyable best*

As some of you may be aware, Dave Finnis has given up his job as Publicity Officer for the Society. This has left a great void in the public face of the Society. To many outside groups such as television, radio and the press, Dave Finnis was the Huddersfield Canal Society. David was always aware of this problem and managed to tread the difficult line between promoting the Society and promoting himself. Such was his level of output that he cannot be replaced by one person but has been succeeded by a new Publicity Group that is chaired by another Dave, Dave Wakefield.

For those of you wondering what has brought this cataclysmic change in the Council, it is that Dave Finnis now has a new position as a full-time Countryside Warden based at Tunnel End Cottages. As a result of accepting this job he obviously had to give up any posts that could be seen to have a conflict of interest with his new position.

This was a very difficult decision for David as he has always wanted a full-time Ranger job but is obviously committed to the Society. In the end he had to take the job and we shall all miss his great contribution to the Society. He has not died though, and would welcome invitations to the Society's events.

Dave Wakefield



The HCS Float at the annual Kirklees Mayor's Parade in Huddersfield.

HCS CANAL CRUISES AT UPPERMILL

Starting from Uppermill Basin (adjacent to Saddleworth Museum), our 70 foot long covered narrow boat 'Benjamin Outram' leaves regularly on a selection of cruises.

Half hour return trip to Dungebooth Lock - Adult 50p, Child 25p

1½ hour return trip through Dungebooth & Lime Kiln (recently restored) Locks, under the majestic multi-arched railway viaduct and over the renowned 'old sag' aqueduct, taking in three levels of waterway. **Adult £1, Child 50p.**

This latter trip can be extended by prior arrangement to allow sufficient time to take in Brownhill Visitor Centre, Clough Bottom Nurseries, the restored trans-shipment warehouse and/or Stonebottom Mills.

CHARTERS FOR YOUR PARTIES EXCLUSIVE USE

Parties of up to 48 persons can be booked for any length of time, any combination of cruising arrangements and, should you so wish, a 'package' could also include visits to other local places of interest, plus arrangements to accommodate parties within local hostelries for either a meal or an evenings enjoyment.

So for your reunion, club/Society outing, birthday or anniversary party, office works, or leaving 'do', school visits - or just another Teddy Bears Picnic or Boston Tea Party.

CONTACT:

Harold Neild, 3 Grosvenor Square, Uppermill, Oldham OL3 6DG
on
Saddleworth 3085

Our Society trip-boat at Uppermill is now meeting public demand 7 days a week since the writer took over its weekday operation. Round the year chartering will be offered, not only to the populus of Huddersfield and Greater Manchester, but through the North-West and Yorkshire and Humberside Tourist Boards, to the whole of Britain.

Living on the 'cut side' and only some 40 yards from Benjamin Outram's mooring, it seems natural that I should discuss with HCS Council the possibility of creating a continuous service — rather than allow a high capital investment to lie idle for over 70% of its potential working life.

Toilet emptying, refuelling, freshwater, and refreshment supplies, plus electrical maintenance and improvements are all ideally carried out from my home at 3 Grosvenor Square.

Boat security can never be considered to be beyond the attempts of a determined intruder, but, by living so near, I feel that frequent late night/early morning vigils greatly deter petty thieves and adventurous children. Furthermore, a vigilant neighbour Mrs Fielding and her daughter Marjory, both firm allies of our cause, manage to keep a watchful eye on the Society's investment. Whilst on the subject of allies, it's as well to remember that we still have a considerable public relations operation to carry out amongst **some** Uppermill residents. Not all 'locals' are enchanted with the part we play in advancing tourism in Saddleworth. To this end, my own team of steerers invariably decelerate on reaching Moorgate Bridge until we have passed right round the tight bend and beyond the waterside houses. This reduces noise and diesel fumes during each journey as we pass a most picturesque hamlet — Moorgate. Perhaps by passing this on, we may encourage weekend skippers to follow our example and make our discussions with local objectors more persuasive.

Publicity leaflets are in the process of production and I would be pleased to send a copy to anyone interested. (SAE please) to: Harold Neild, 3 Grosvenor Square, Uppermill.

Harold Neild



*Photo shows Benjamin
Outram at Uppermill.*

Photo: H. Neild

Local members in the Colne Valley and Huddersfield areas will no doubt have seen a great deal in the local press about the Waterways Board's proposals for the reservoir at Tunnel End, Marsden. Early in the year the Board submitted a Planning Application to Kirklees Council proposing the construction of a siphon spillway from the reservoir under the dam, under the canal and the railway alongside the cottages at Tunnel End. At the same time two applications were submitted for Listed Building Consent to demolish the existing spillway and certain walls along Ainsley Lane over the embankment. (They are not actually Listed Buildings, but this consent is required to demolish structures over a certain size in Conservation Areas; the site is within the Marsden, Tunnel End Conservation Area).

After considerable deliberation the Council's Development Control (Agbrigg Area) Sub-Committee effectively said to the Board that they would not consider the applications until a further Planning Application was submitted for works proposed in the reservoir itself. The effect of these is to remove the reservoir, which has become increasingly silted up over the years since the canal was abandoned. It is proposed to dig a channel through the silt lined with gabions (strong wire cages filled with stones) into which the water will drain, leaving several acres of silt to dry out over an unspecified period of time. Eventually this will become a channel through which the water flows and the silt will shrink as it dries to create a new land surface alongside the channel. That Planning Application has now been submitted and has caused an enormous local reaction against the Board's proposals. According to the press over 1,000 letters of objection have been submitted to Kirklees.

The Society has written to the Council setting out our views. We understand the Board's dilemma. They have to provide a safe spillway for the reservoir. The existing one is not large enough to cope with potentially catastrophic floods. At the same time there are limitations on their spending, and they have to deal with an increasingly silted reservoir as part of the works. To dredge the reservoir and remove the silt would be very costly. Not surprisingly local people wish to retain an attractive area of water rather than face the prospect of seeing a large area of drying and shrinking mud. They see the reservoir as an asset whose use for water-based activities should be encouraged. We agree with that view, but must remember that the Society is in business to encourage the restoration of a canal. The question of making the most of the environmental prospects offered by the reservoir is peripheral to that.

The main water supply to the canal originally came from Pennine reservoirs on Standedge. Water from these is now diverted to the Yorkshire Water Authority's reservoir at Scammonden, and water is supplied to the canal from there. A part of the Agreement between the Waterways Board and the former Huddersfield Corporation when that reservoir was built required that no water should be taken from the river system to the canal other than that provided from Scammonden. That prohibits any water being taken from Tunnel End Reservoir to feed the canal.

The Waterways Board say that there should be enough water to feed the canal, but we believe that in a dry summer such as this supplies may be barely adequate. Although that is common to many canals, we wonder whether it would be possible for the Yorkshire Water Authority to agree to an abstraction license, over and above the original agreement, whereby water could be stored in a dredged Tunnel End Reservoir rather than run to waste in winter. It could then provide some additional water for the canal in summer. Whether the quantity of water which could be stored would be sufficient to justify the costs of dredging we cannot tell without an expensive engineering study which we cannot contemplate financing. We have, therefore, suggested to Kirklees that this is something they should consider in addition to the environmental questions of the loss of such an important area of water and the loss of a major potential recreational asset.

Keith Gibson

holiday accommodation

Self-Catering, sleeps 2 alongside Kennet and Avon Canal, Wiltshire/Berkshire border. Tel: 0672 870245.

deeds of covenant

Those who wish to help the Society further by paying your subscription under a deed of covenant then please write to or phone me for details.

Sue Bradbury, Treasurer

THE PEAK AND PENNINE LINE...

narrowboat cruising at its best ...

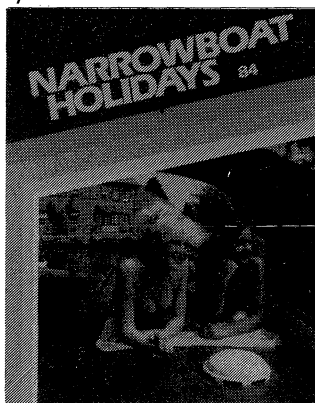
Our canal cruising holidays offer an unrivalled variety of routes, scenery, boats and prices.

Cruise through the glorious Yorkshire Dales, National Park on the Leeds/Liverpool Canal — enjoy the scenic delights of the Cheshire ring and pretty Peak Forest Canal in Derbyshire.

Free 'Two Base' colour brochure from:

**The Holiday Booking Service,
21/23 High Street, Gargrave,
Skipton, North Yorkshire.
Tel: Gargrave (075 678) 8105**

**'A UNICON MARINE
PRODUCTION'**



A HOLIDAY WRITING COMPETITION

Sponsored by British Waterways Board and Waterways World

WIN A FREE CANAL HOLIDAY

Most people who take canal holidays agree that they're unique. There's really nothing to match the feeling of drifting through countryside, villages and towns on our quaint old waterways; the challenge of massive lock flights, the unexpected adventures which have an uncanny habit of creeping into most canal trips.....

Perhaps you keep a log-book which you feel deserves better than consignment to a little used drawer along with the holiday snapshots. Or maybe you have more serious literary ambitions? Either way, here now is a great incentive to sit down and write your own story.

ENTRY DETAILS



Category 'A' — Exploring Britain's Heritage by water.

1984 is Heritage Year, and prizes will be awarded for the best short stories or articles which illustrate how a canal holiday provides opportunities for appreciation of the many various aspects of the Nation's heritage — visits to nearby places of historical, industrial or architectural interest, retracing the steps of 19th century boatmen, local customs and traditions, enjoying the yarns of old boatmen about the bygone days of commercial carrying etc.

Category 'B' — A Canal Holiday Travelogue

Judges will be looking for the most polished and entertaining holiday narrative — the kind of story that would attract other readers to try a canal holiday.

Entries may be supported by colour or black and white photographs, or original illustrations. Length should not exceed approximately 1,000 words. Entries should be typed, double-spaced with 1½ margins. Author's name and address, and entry category should be marked clearly on page 1, and the name repeated on each subsequent page. Entries should be addressed to: British Waterways Board (Leisure Division), Writing Competition, Penn Place, Rickmansworth, Herts WD3 1EU, to arrive no later than 31st October 1984. Prize winners will be notified direct and a list of winners published in the January 1985 issue of 'Waterways World' and February 1985 issue of 'Waterways News'.

Prize winning entries will be considered for publication by Waterways World; if published, the normal reproduction fee will be payable.

PRIZES

1st Prize in each category:

One week's free holiday on a BWB hire cruiser (maximum 6 berth), low or shoulder season 1985, PLUS a crate of "Pedigree" stowed aboard with the compliments of MARSTONS brewery.

2nd Prize in each category:

A weekend break for 2 in a canalside cottage.

contd.



Special awards for 2 runners up in the 'Heritage' Category:

Membership for one year of the National Trust (presented by courtesy of the National Trust, many of whose properties are located close to the waterways).

Other prizes include 2 annual subscriptions to *Waterways World*, 2 individual memberships of the Inland Waterways Association, a day's discovery tour of the Kennet and Avon Canal, admission for a party of 4 to the Waterways Museum at Stoke Bruerne, assorted waterways books.

RULES

1. Entry is open to anyone except employees of the sponsoring organisations and their families.
2. Entries may not be articles already published, or submitted for publication elsewhere.
3. BWB reserves the right to edit and publish entries, or submit them for publication elsewhere. Due credit will of course be given.
4. Judging will be by a panel of experts including representatives of *Waterways World* and British Waterways Board, and a professional travel writer. In the event that entries do not meet a high enough standard, the right is reserved not to award prizes as

- advertised. The judges' decisions are final and no correspondence will be entered into. No cash alternatives to prizes will be offered.
5. Closing date for entries is 31st October 1984.
6. Entries requiring acknowledgement should be accompanied by a specific request and stamped addressed envelope.
7. Entries, including photographs/illustrations will only be returned if specifically requested and accompanied by a stamped addressed envelope.
8. Entry in the competition implies acceptance of the above rules.

FRANK BENNETT

T.ENG, M.I.E.C.

MARINE ENGINEER AND SURVEYOR

"Lynwood"

81 Lodge Lane, Dukinfield, Cheshire SK16 5JF

PLEASE NOTE WE HAVE MOVED

and I am now available from the above address and telephone number to undertake the Survey of All Inland Waterways Craft for B.W.B. Certificates of Compliance, Insurance/Damage Reports and Pre-Purchase Reports.

061-303 0466

or if out please use Radiophone

Dial 061-442 9900

and ask for Call sign 'Manchester-63'

celtic canal CRUISERS Ltd.



If you're hooked on canal boating, why not try a holiday on the Irish waterways. From our base on the Grand Canal you may travel West to the River Shannon or East to the River Barrow, offering a variety of routes. Easy access by car to our base via Holyhead/Dublin car ferry. Our fully equipped Narrowboats are built to high standards in England. For further details write or phone (direct dial) for our brochure. Celtic Canal Cruisers Ltd., Tullamore, Co. Offaly, Ireland. Tel. 010353506/21861. Telex 33738.

SEPTEMBER

- **** 24th Jack O'Mitre, Scammonden, Huddersfield.
- ** 25th Rose and Crown (The Nook), Victoria Square, Holmfirth.
- * 26th The Packhorse, Carr Lane, Slaithwaite.
- ** 27th Barge and Barrel, Park Road, Elland.
- ** 28th Rose and Crown, Market Street, Stalybridge.
- **** 29th The Jubilee, Simmondley Lane, Glossop.
- **** 30th Olive Branch, Manchester Road, Marsden.

OCTOBER

- **** 2nd Church Inn, Church Road, Uppermill.
- * 3rd Navigation Inn, Chapel Lane, Sowerby Bridge.
- ** 4th Cheshire Ring Hotel, 72 Manchester Road, Hyde.
- **** 5th The Plough, Northorpe, Mirfield.
- ** 6th Worsley Cruising Club, Cawdor Street, Patricroft, Eccles.
- **** 7th Travellers Rest Inn, New Mill Road, Brockholes, Huddersfield.
- **** 9th Lord Nelson, High Street, Luddenden.
- ** 10th Station Hotel, Warrington Street, Ashton-under-Lyne.
- **** 11th Royal Oak, Manchester Road, Linthwaite, Huddersfield.
- * 12th Elland W.M.C., Rosbery Street, Elland.
- **** 13th The Station, Helmshore Road, Helmshore, Rossendale.
- **** 14th Farrars Arms, Oldham Road, Grasscroft.
- **** 16th Rose and Crown (The Nook), Victoria Square, Holmfirth.
- * 17th Cross Keys, Huddersfield Road, Delph.
- * 18th Rock Inn Hotel, Holywell Green, Halifax.
- * 19th Ye Olde Raggalds Inn, Queensbury, Bradford.
- ** 20th Duke of York, Church Street, Eccles.
- ** 21st Olive Branch, Manchester Road, Marsden.
- * 23rd) Mechanics Institute,
- **** 24th) Peel Street,
- **** 25th) Marsden,
- ** 26th Huddersfield,
- ** 27th West Yorkshire.
- * 28th Travellers Rest Inn, New Mill Road, Brockholes, Huddersfield.
- ** 30th Lord Nelson, High Street, Luddenden.
- ** 31st The New Inn, Wellington Road, Stockport.

NOVEMBER

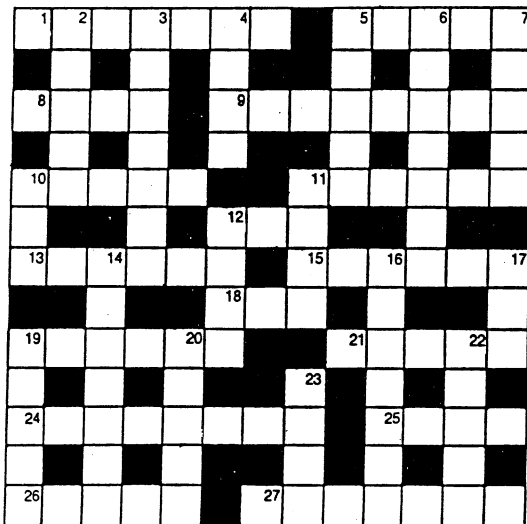
- * 1st Jack O'Mitre, Scammonden, Huddersfield.
- * 2nd Birchcliffe Centre, Hebden Bridge.
- 3rd Venue to be announced — Burnley area (Tel: Huddersfield 845264 for details).
- ** 4th Boat and Horses, Broadway, Chadderton, Oldham.
- **** 6th Scapehouse Inn, Scapegoat Hill, Huddersfield.
- * 7th Station Hotel, Warrington Street, Ashton-under-Lyne.
- **** 8th Red Lion, Jackson Bridge, New Mill, Huddersfield.
- **** 9th The New Inn, Froesthill Road, Sowood, Stainland, Halifax.
- * 10th The Railway, Station Road, Marsden.

contd.

ALL PERFORMANCES START AT 8.00 p.m.

- Key: * "Still Carrying" — This is the story of our narrowboat "Tyseley".
- ** "From Where I Stand" — This show follows the lives of three hilltop farmers from the 1920's to the present day.
- *** "Manchester-Super-Mare" — In this show we detail, in the 90th year of its existence, the dramatic history of the Manchester Ship Canal.

crossword no.19



CLUES ACROSS

- 1 Canal sidewalk (7)
- 5 The upper air (5)
- 8 Nothing at all (4)
- 9 Locks 'messed up' (8)
- 10 A bucket maybe (5)
- 11 Buffer (6)
- 12 Girls name (3)
- 13 Judgment (6)
- 15 Lasts the course (6)
- 18 Our canal? (3)
- 19 Gap (6)
- 21 The lot (5)
- 24 Neatness (8)
- 25 And (4)
- 26 Sing falsetto (5)
- 27 Big holes (7)

CLUES DOWN

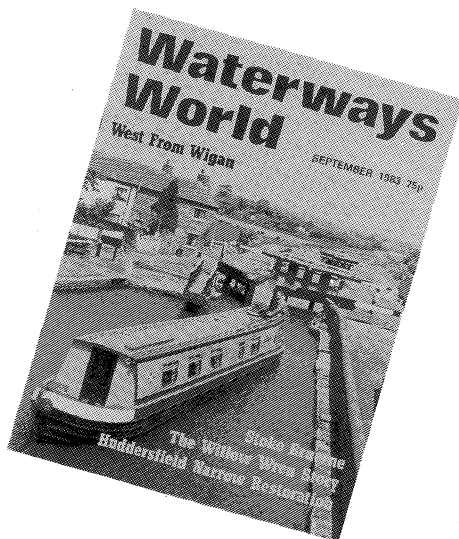
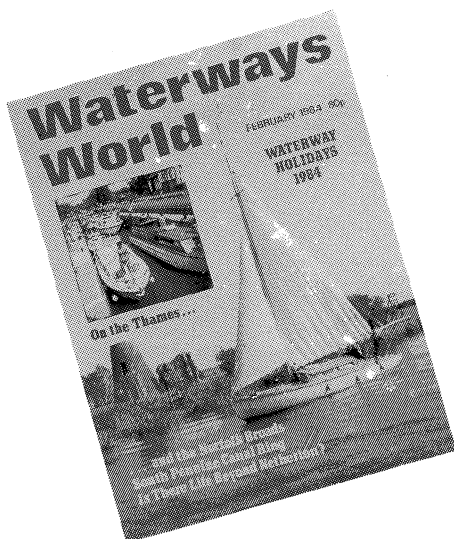
- 2 Musical play (5)
- 3 Gets movement (7)
- 4 Barge outing maybe (4)
- 5 The upper crust (5)
- 6 Welcome break (7)
- 7 Horseman (5)
- 10 Refresh here (3)
- 11 Secure (4)
- 12 Edge forward (4)
- 14 Altered (7)
- 16 From side to side (7)
- 17 Fish eggs (3)
- 19 Old canal boat (5)
- 20 as 18 across properly (5)
- 22 Concentrated beam (5)
- 23 Operator (4)

Kindly sent in by Mr James Crosland.

Until the Huddersfield Narrow's open again let

Waterways World

link you to the rest of the waterway's world!



The highest level in waterways reading for the highest level of waterway

**Waterway Productions Ltd., Kottingham House,
Dale Street, Burton-on-Trent, Staffs. DE14 3TD.**

Waterways World - *Your monthly towpath telegraph*





earthworm



services

WE ARE A SMALL FIRM OF GARDENERS WHO CARRY OUT ALL TYPES OF GARDENING WORK, FROM LARGE GRASS CUTTING JOBS DOWN TO SMALL "JUNGLE" CLEARANCES.

OUR SPECIALITY IS REGULAR GARDEN MAINTENANCE WHICH WE UNDERTAKE FOR FIRMS, HOUSES, PUBS, LOCAL AUTHORITIES, AND EVEN THE CHURCH. WE WOULD BE PLEASED TO QUOTE FOR ANY OF YOUR GARDENING NEEDS.

EARTHWORM SERVICES
5 PARKFIELD ROAD
GRASSCROFT
SADDLEWORTH, OLDHAM
OL4 4JG
TEL: SADDLEWORTH 6033

pennine link advertising rates

	per issue	6 issues
¼ page	£2.00	£10.00
½ page	£3.50	£17.50
Full page	£6.50	£32.50
Classified ads 5p per word		
Box No. 50p		

SELF-ADHESIVE SIGNS
STICKERS
TRANSFERS



Where there's a need for plant equipment, there's a need for Pearlan Decals.

Made to your individual requirements — in tough self-adhesive vinyl!

Contact us for a quotation stating size, quantity and number of colours.

PEARLAN DECALS LTD

18 Hereward Rise, Halesowen,

West Midlands.

Telephone: 021-550 8116

Equipment
Supplied by



J. CROWTHER (ROYTON) LTD



MARINE ENGINEERS

EDEN WORKS, HONEYWELL LANE,
OLDHAM, LANCS OL8 2JP.

Tel: 061-652 4234/5

WE DESIGN AND MANUFACTURE PROPELLERS AND STERN GEAR TO CUSTOMERS OWN REQUIREMENTS
PROPELLERS MANUFACTURED UP TO 30" DIAMETER
AND STERN GEAR UP TO 3"

WE HAVE A REPAIR SERVICE FOR PROPELLERS

WE OFFER PROMPT SERVICE
FOR ALL DEMANDS SMALL OR LARGE

Grompton Batteries Ltd

Supply Automotive batteries for car and diesel engine starting, Traction batteries for fork trucks and electric milk floats and of course batteries for electric boats.

Local depots at:

Manchester — 0204 700927/700902

& Leeds — 0532 776457/790539

Quiet, pollution-free transport
takes to the water...
The Huddersfield canal electric
boat is powered by

CHLORIDE

Chloride Industrial Batteries Ltd., P.O. Box 5,
Swinton, Manchester M27 2LR, England

Victoriana Tea Room and Grill

23 High st
Uppermill

LICENSED



Tel. Saddleworth 3589
after hours 5960

**Tea rooms every day 10.00am-5.30pm Restaurant—
BISTRO NIGHTS + Weekly special £5.50 for two people +
Tuesday-Saturday 6.30pm-10.30pm
Sunday lunches and weekend grills
Next to Saddleworth Museum and car park!**

JOIN NOW

Your support is needed now. The more members we have, the more effective is our voice. Help to re-open the Huddersfield Narrow with your pen, your spade, your moral support or in any other way you have to offer.

To: The Membership Secretary, Huddersfield Canal Society, 38 Paris Road, Scholes, Holmfirth. Telephone 'Holmfirth 685022

I/We wish to join the Huddersfield Canal Society.

Name/s

Address

.....

.....

Postcode Telephone:

Occupation

Amount enclosed £ Cheque/PO/Cash

I heard about the Society from

MEMBERSHIP RATES

Family Membership £3.50. Junior (under 18) £1.00

Associate £5.00 (voluntary societies)

Corporate £10.00 (minimum) Life £50.00

Members receive free copies of 'Pennine Link', the society's bi-monthly magazine.



In September 1983 my good friend David Ford had one of his regular exhibitions at the Player's Theatre in Delph during a Saddleworth Players Production of the Don Quixote musical 'Man of la Mancha'. David is almost certainly Saddleworth's best selling watercolour landscape artist. He has exhibited at the Royal Academy Summer Exhibition and, when not working for a living, spends a lot of his time touring the country winning pro-art competitions.

One of his pictures in this particular exhibition was of the Huddersfield Narrow at Stalybridge, and my wife who, like me was involved in the show, spent a week admiring the picture and dropping the sort of gentle hint that wives do, about the bare patch on the sitting room wall; about our love of canals and the fact that we had no canal pictures; about Christmas coming up, you know what I mean.

About Thursday a red spot appeared on the picture, I was relegated to the dog house and the canal picture went to grace somebody else's bare patch. I already had an idea in the back of my mind. I knew that within a week or two the first of the lock gates would be fitted on the reclaimed Dungebooth Lock at Uppermill, only five minutes walk from our house. I asked David if he would paint a picture of the lock, with its new gate as soon as possible after the fitting, so that I could have the first picture of the first new lock gate on the canal for forty years.

He agreed and I looked forward to getting out of the dog house at Christmas, killing two birds with one stone. Unfortunately David hadn't quite got the message and one night in October, when I was out, he delivered the completed picture to a very surprised wife!! Ah well, best laid plans and all that.

Another idea had been running around the back of my mind which crystalized when I saw the beautiful picture that David had produced. I could organise a limited edition of full colour prints of the picture, to be sold for HCS funds. I contacted David who immediately agreed to the idea in principle and volunteered to sign and number 250 prints. Many estimates were obtained for printing and framing and eventually I was able to offer the HCS Council a price of £12.50 for the print mounted and framed and enough left over to put a fair chunk into the Society funds. This I compared with a price of £25 for black and white prints of lock-gear and bridge number plates seen on the Lower Oxford and I thought we were onto a good thing.

At the time (Nov/Dec 1983) HCS funds were a bit low and it was agreed that the print should be announced in Pennine Link in January/Feb. 84 and that orders should be invited, the actual printing to be done when the advance orders covered the printing cost of several hundred pounds. Orders trickled in until the original picture was displayed at the Diggle, Huddersfield and Uppermill festivals when real interest was shown. By the deadline of the end of June, sufficient orders had been received to justify the printing.

Through a friend in the printing trade I heard of Interprint at Harrogate, a firm specialising in high quality full colour brochures for industry and commerce.

PENNINE LINK

Getting involved with the art world rather tickled them and they were full of enthusiasm and soon offered a very competitive price for the print run.

Likewise, Garforth Glass at Lees, near Oldham, came up with a very special price for the mounting and framing — and we were in business.

Such was Interpret's enthusiasm that the two week printing schedule became six days! Just to prove a point.

I mounted one of the prints in the original frame and completely hoodwinked my wife and the painter (briefly)! The first order is now being completed and will be ready by the first week in September. I have seen one already and it looks exactly like the original in every respect. It seems inconceivable to some that we have managed to produce a picture in full colour of such a large size (the frame measures 1'8" x 1'4" and the picture itself 1'3" x 1'1") for such a modest price. To prove the point I am arranging for copies to be exhibited at information centres, HCS pubs and other haunts, so that people can see what they are buying.

I talked earlier about killing two birds with one stone. Now you can — contribute to HCS funds **and** have a superb water-colour print for yourself or a friend (Christmas is coming!) for only £12.50 framed for collection or delivery local to the canal or £6.00 unframed for delivery (in a tube) by post. Orders to Jean Buckley at 37 Edward Street, Oldham, or Tel: 061-624 4881.

Ken Wright

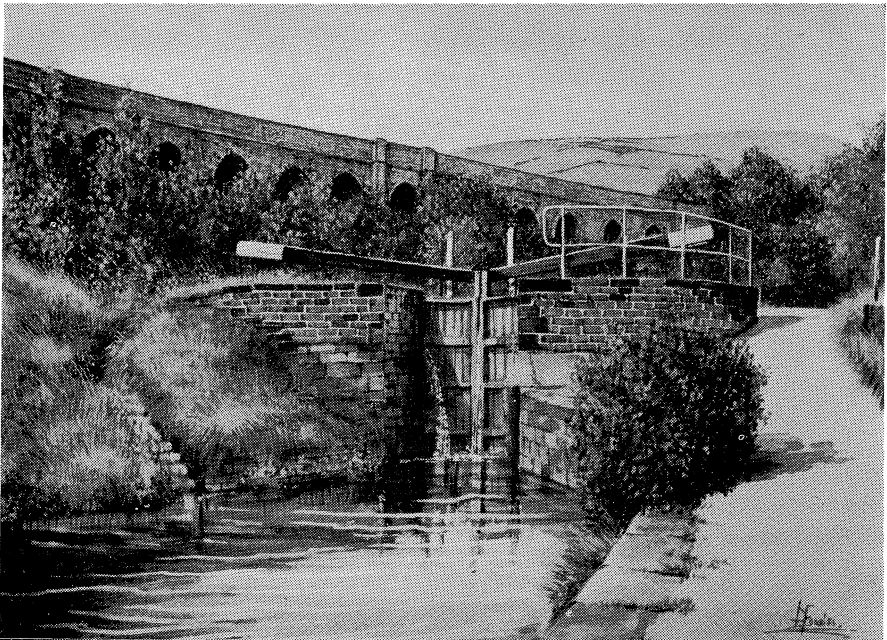


Photo: Kedrick Whitehead

PRINTING

Tickets, Cards, Notepaper,
Bazaar Tickets,
Draw Tickets, Advertising/
Fund-Raising Pens, Pencils,
Diaries, etc.
Notepads.

Kirkfield Press

Dewsbury 462875 anytime

OCTOBER 7th TOEPATH '84

DESPERATELY NEEDED MARSHALLS

FOR THOSE OF YOU WHO DON'T
FEEL UP TO TAKING PART IN THE
WALK, BUT YET WOULD LIKE TO
TAKE PART IN THE DAY'S EVENT,
MAYBE YOU'D BE WILLING TO BE
A MARSHALL. EVEN IF YOU CAN
ONLY MANAGE A COUPLE OF
HOURS, YOUR HELP WILL BE
MUCH APPRECIATED. OFFERS
OF HELP PLEASE TO:

**MALCOLM DOUGHERTY
ON HUDDERSFIELD 845770.**

The Diggle Hotel

**HIGH QUALITY HOME-
COOKED LUNCHESES
MONDAY-FRIDAY
EVENING BAR SNACKS
SATURDAY LUNCHTIME
BASKET MEALS/SNACKS**

Yours Hosts:

**Pam & David Jowett
Margaret & Clifford Bucknall**

FREE HOUSE

Diggle, nr Oldham.

Tel: Saddleworth 2741



When reading through a rival magazine I was amused to see the story of a Scotty dog who had raised the incredible sum of £200 on their towpath walk. The gallant little dog completed four miles before its owner decided to call it a day.

This made me think of the possibilities for HCS. If you're going along to the annual 'Toepath' walk and you fancy brightening up the day for yourself and the other weary walkers — why not try something different this year? — a goat might be popular with the kids or an owl would be a hoot, perhaps, — and get your friends to sponsor it for several miles (but don't over do it though — we don't want problems with the RSPCA!) Or how about doing it in fancy dress or wearing a silly hat? — the possibilities are endless and it would give a lift (not literally, unfortunately!) to a tiring but worthwhile day.

So how about it folks — cheer up your feet on 'Toepath 84', make it a day to remember and help to raise some much needed extra cash.

Kathryn Goodwin

Autumn Sale

Huddersfield Canal Towpath Guide

£2.50 NOW £1.50
(plus p&p 40p)

Huddersfield Festival Plates

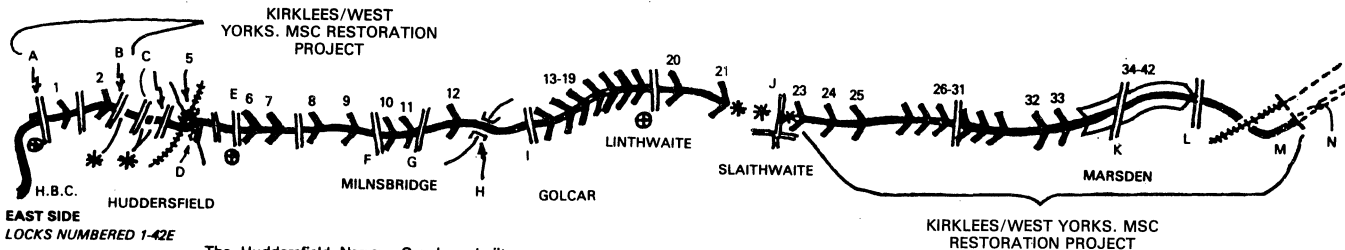
Limited Edition of 250

£5.95 NOW £4.95

appeal to whisky drinkers

There is a certain brand of whisky whose name may ring a Bell with you. When you buy a bottle there is a golden tag hanging round the neck. If you haven't noticed there is the story of a bell on it and there are 42 different ones to collect.

Keep the bells ringing in! The scarce numbers seem to be 3, 13, 39 and 42. If you have any of these we might be able to make up several sets. Please send them to Mr R. Stiles, 94 Hindes Road, Harrow, Middlesex HA1 1RP or pass on to any council member.

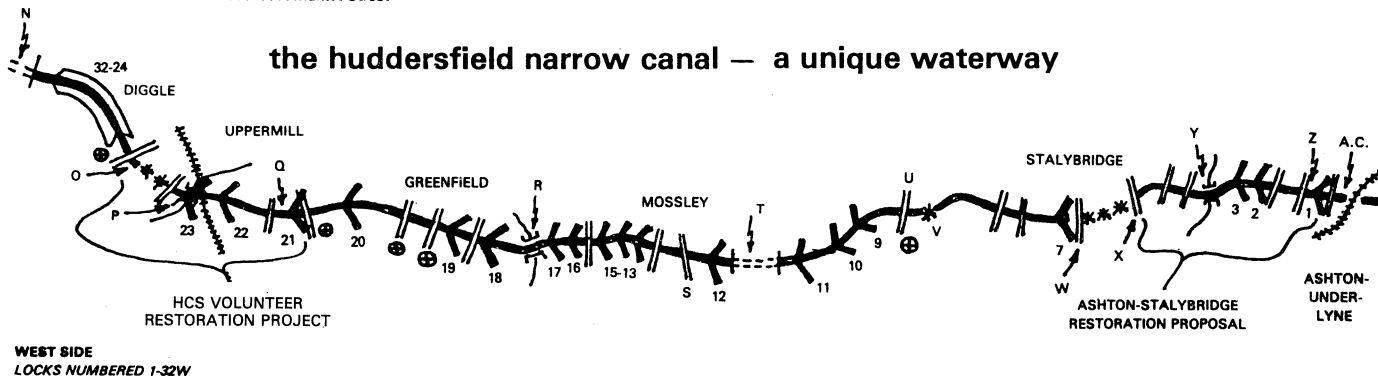


The Huddersfield Narrow Canal — built 1793—1811. Engineer: B. Outram. Closed: 1944. Last recorded passage across Summit: 1948. Restoration began 1981. Length: 19⁷/₈ miles. Summit pound: 645 ft. above sea level through Standedge Tunnel — 3 miles 418 yards long.

H.B.C. Huddersfield Broad Canal
A.C. Ashton Canal
A. Wakefield Road
B. Queen Street South
C. Manchester Road
D. Paddock Foot Aqueduct
E. Stoney Battery
F. Market Street

G. Morley Lane
H. Golcar Aqueduct
I. Golcar Swing Bridge
J. Britannia Road
K. Warehouse Hill
L. Station Road
M. Tunnel End Cottages
N. Standedge Tunnel
O. Wool Road Warehouse and
Brownhill Visitor Centre
P. Saddleworth Aqueduct
(old Sag)
Q. Uppermill Museum

R. Royal George Aqueduct
S. Egmont Street
T. Scout Tunnel
U. Grove Road
V. Hartshead Power Station
W. Mottram Road
X. Bayley Street
Y. Stalybridge Aqueduct
Z. Whitelands "Tunnel"
* Infilled sections
+ Culverted or lowered bridges



ORDERS TO SALES OFFICER: Mrs JEAN BUCKLEY

HCS logo sweatshirts, sm, med, large) asstd	£8.95	50p p&p
HCS logo sweatshirts, XL) colours	8.95	50p p&p
HCS logo sweatshirts (Navy) XL	9.25	50p p&p
Lovely Shetland Wool Sweaters with HCS motif — various colours — please write or phone for details	£12.50	50p p&p
'I've Been on Stan' Badges	30p	S.A.E.
Pennine Link	25p + 2nd class postage	
Tunnel End postcards	10 for £1.00	inc. p&p
Various coloured postcards	9p each	S.A.E.
HCS Ties — Maroon, Brown	£2.95	25p p&p
HCS Brass Plaques	£7.25	£1.00 p&p
HCS Badges	20p & 2nd class stamp	
T-Towels (Reproduction of old Standedge Tunnel poster	£1.75 & 25p p&p	

BOOKS AND MAPS

Filled t' top wi' rubble (Mossley Report)	75p	15p p&p
Nicholson's Guides (latest editions)	£4.95	25p p&p
Yorkshire Waterways	£1.60	25p p&p
Lancashire Waterways	£1.75	25p p&p
Birds of Hedgerows...Mountains...		
Inland Water and Gardens each	85p	15p p&p
Wild Flowers of Waterways	85p	15p p&p
Ladybird Book of Canals	50p	15p p&p
The Ashton Canal	90p	15p p&p
Huddersfield Canals Towpath Guide	Reduced to £1.50	40p p&p
Tunnel End Brochure	50p	15p p&p

membership

We are pleased to welcome the following new members:

- 1248 Andrew N. Linfoot, [REDACTED]
- 1249 Malcolm D. Wells, [REDACTED]
- 1250 Steven and Irene Mitchell, [REDACTED]
- 1251 Ian Myers, [REDACTED]
- 1252 Kathryn Goodwin, [REDACTED]
- 1253 Peter Dawson, [REDACTED]
- 1254 Diane Mellor, [REDACTED]
- 1255 Geoffrey and Susan Stainton, [REDACTED]
- [REDACTED]
- 1256 James, Elizabeth and Simon Lamen, [REDACTED]
- [REDACTED]
- 1257 John L. Morley, [REDACTED]
- 1258 Mrs S. Brady, [REDACTED]

PENNINE LINK

1259 Carol R. Baxter,
1260 Philip A. O'Neill,
1261 Mr & Mrs A. P. Cockroft,
1262 Clive A. and Jeanne Holroyd,
1263 Felicity Tipple,
1264 Andrew R. Bull,
1265 Sheila Osborn,
1266 George and Margaret Hawkins,
1267 John R. Taylor,
1268 Ruth Hawkins,
1269 Charles S. Tunbridge,
1270 Keith and Mavis Knutton & Family,

1271 Brian P. Hindle,
1272 Miss C. Shaw,
1273 John B. Scothern,

Val Dewey — Membership Secretary

diary

- 6th Sept. 8.00pm Royal Oak, Linthwaite, Huddersfield. Speaker from BWB.
- 12th Sept. 8.00pm Social Meeting at the Farrars Arms, Grasscroft, Oldham.
- 4th Oct. 8.00pm Social Meeting at the Railway, Marsden.
- 7th Oct. Toepath '84. For details ring Alison Fisher on Huddersfield 842963.
- 10th Oct. 8.00pm Social Evening. 'From where I stand' Mikron Show at the Station Hotel, Ashton.
- 1st Nov. 8.00pm Illustrated talk by Alan Jervis of WRG at the Royal Oak, Linthwaite, Huddersfield.
- 14th Nov. 8.00pm Social Meeting at the Farrars Arms, Grasscroft, Oldham.
- 17th Nov. Flag Day in Huddersfield.

Forthcoming Events:

- 15th/16th Dec. HCS Weekend on the 'Stratford Blitz'. See Graham Maskell's article on page 7.
CHRISTMAS CEILEIGH. Date to be arranged. See next HCS Pennine Link.

EDITOR. The editor holds the right to edit or withhold articles and letters or to retain them for publication at a later date.

© Huddersfield Canal Society Ltd 1984

ARTICLES may be reproduced in allied magazines without prior reference providing the source is acknowledged.
The Diggles © Huddersfield Canal Society Ltd 1984

