

10th  
Anniversary  
issue

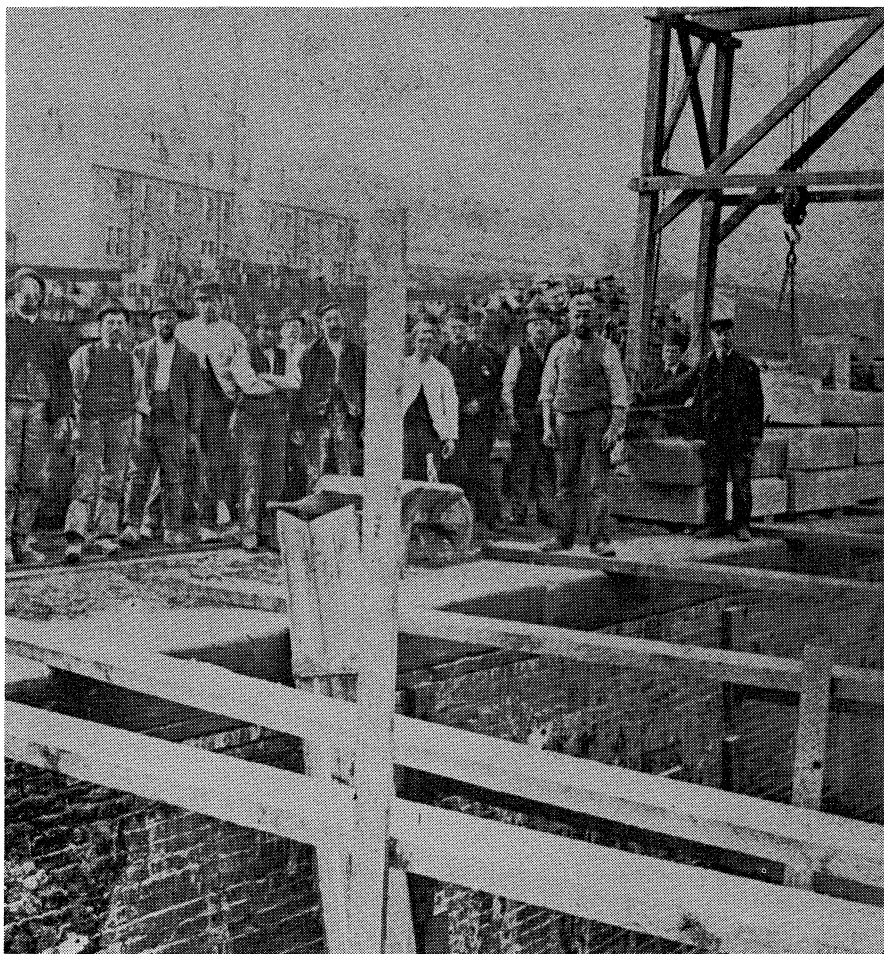


**25p**  
FREE TO  
MEMBERS

# PENNINE LINK

No.56

March/April 1984



Chairman & Uppermill Project	David Sumner	54 High Lea Road, New Mills, Stockport. Tel: Whaley Bridge 4611
Vice-Chairman & Cottages	Trevor Ellis	20 Batley Avenue, Marsh, Huddersfield 34666
General Secretary	Robert Dewey	38 Paris Road, Scholes, Huddersfield Holmfirth 685022 HD7 1UA
Treasurer	Mrs. Susan Bradbury	15 Rowley Lane, Lepton, Huddersfield. Tel: Huddersfield 603467
Sales Officer	Jean Buckley	37 Edward Street, Oldham. 061-624 4881
Publicity Officer	David Finnis	12 Chapel Hill, Linthwaite, Huddersfield. Tel: Huddersfield 846087
Editor	Sue Gibson	14 Simmondley New Road, Glossop. Tel: Glossop 64031
Uppermill Project Manager	Graham Maskell	19 Quick View, Mossley. Tel: Mossley 3992
Boat Officer	John Maynard	29 Thick Hollins Drive, Meltham, Huddersfield 850575
Projects Officer	Keith Gibson	Northcote House, Niels Road, Slaithwaite, Huddersfield. Tel: Huddersfield 844596
Festivals Officer	Mrs Hazel Maskell	19 Quick View, Mossley. Tel: Mossley 3992

**non-council posts**

Company Secretary	John Fryer	2 Popley Drive, Meltham, Huddersfield.
Membership Secretary	Mrs Val Dewey	38 Paris Road, Scholes, Huddersfield Tel:Holmfirth 685022 HD7 1UA
West Side Secretary	Miss Jean Wrigley	44 Stamford Street, Millbrook, Stalybridge. Tel:061-303 9027
West Side Chairman	Jean Buckley	37 Edward Street, Oldham. 061-624 4881
East Side Chairman	Dave Irving	416 Blackmoorfoot Road, Crosland Moor, Huddersfield.
East Side Secretary	Mrs Anne Crosland	44 Marina Terrace, Golcar, Huddersfield. Tel: Hudds. 659748.
Sheffield Branch	Joyce and Phil Calverley	25 Wulfric Road, Eckington, Sheffield, Chesterfield 432140
Press Cuttings	Neil Frazer	84 Broomfield Road, Marsh, Huddersfield.
Stamp Officer	Brian Grant	11 Southfield Road, Aldmondbury, Huddersfield.

**Cover photo** shows men hard at work rebuilding Lock 38E at Marsden in the 1890's. Photo courtesy of Mr C. Westoughby.

HCS LTD. REGISTERED OFFICE: Ramsdens, Ramsden Street, Huddersfield.

**THE JOURNAL OF THE HUDDERSFIELD CANAL SOCIETY LTD.**

Council Members/Non-Council Posts.....inside front cover  
 Editorial..... 1  
 Chairman's Remarks..... 2  
 Uppermill Progress Report..... 3  
 AGM/Increasing Subs..... 4  
 Annual General Meeting..... 5  
 Tunnel End Cottages/Appeal to Whisky Drinkers/  
     New Tourism Officer..... 7  
 Restoration Round-Up..... 8/9  
 Huddersfield Canals Festival..... 11  
 Reflections..... 12/13  
 Statement re Unicon Marine..... 13  
 Planning News..... 13/14  
 Mikron Message/Canal & River Tour..... 15  
 Watercolour Print Offer..... 16  
 Letters..... 17/18  
 Canal & River Tour contd..... 18  
 Crossword No.17..... 19  
 Classified Ads/Holiday Accommodation/Advertising Rates/  
     Press Date/Deeds of Covenant/Press Cuttings/  
     Membership Competition..... 21  
 Toepath '84..... 23  
 Sales List..... 25  
 Forthcoming Events..... 27/28  
 Membership/Solution to crossword no.16..... inside back cover  
 Diary..... back cover

**editorial**

The exciting news this issue has to be that Kirklees and West Yorkshire Councils have both now approved the Marsden-Slaithwaite canal restoration project. This means, hopefully this year we should see the start of MSC restoration on the Huddersfield Narrow.

This good news is made all better because HCS is as you probably know, celebrating its 10th anniversary on the 19th April, so, even if we haven't managed a fully restored canal after a 10 year campaign for restoration we feel progress towards this is now being made.

*Sue Gibson*

Every morning when I drive to work I am reminded of canals. I cross the Upper Peak Forest in New Mills and am more often than not checked by the recently installed traffic lights on the old canal bridge. Thirty-eight tonne juggernauts have threatened the structure so Derbyshire County Council have felt it necessary to restrict movements over this and many other bridges in the County until monies are available to effect repairs. New Mills canal bridge is to be supported by timber propping until at least April 1984 until the Department of the Environment can provide financial propping to support Derbyshire's old short span bridges — a legacy from the days of pack horse teams.

What has this to do with the Huddersfield Narrow? How many people will be aware of a canal when they travel through the Tame and Colne valleys crossing our historic waterway on old bridges, some sadly dropped and the canal culverted and others incongruously left high and dry with nothing to do as the bridge by Lock 23E in Slaithwaite? Well many people ARE aware and the planners of Kirklees' Metropolitan Council and Greater Manchester Council give due credit to the Huddersfield Narrow canal in their respective District and Local Plans. The Kirklees District plan for the Colne Valley has recently been published and I quote "The Council supports the progressive improvement and restoration of the Huddersfield Narrow canal to navigation throughout its length."

G.M.C. is soon to publish the Tame Valley Local Plan and I shall be very surprised if it does not suggest restoration. I urge all members to write to these two Authorities and comment on these public discussion documents.

The Secretary of State for the Environment will now be aware of the H.N.C. We have written pledging our support for the two Metropolitan Counties whilst they continue to support our cause. These large Metropolitan Counties care for the environment. I have asked the Secretary of State to outline his plans for the replacement of G.M.C. and W.Y.C.C. with the organisation or organisations who will carry on the role of canal restoration begun by our two Metro allies.

I began by discussing bridges. Towards the end of January I was relieved to come by a particular canal bridge during the most arduous towpath walk I have ever experienced along the Huddersfield Narrow. The bridge carries Manchester Road over the Huddersfield Narrow. The canal is lucky to be adjacent to the Tollemache Arms and after slipping and sliding up the towpath in the company of Mr Stewart Sim, British Waterway Board's new Area Engineer, we were fortunate to arrive during opening hours.. or was it planned? I had hoped to see the newly surfaced towpath in Mossley. It was left to Trevor Booth, Landlord at the Tolly, to extoll the virtues of BWB's mini restoration through Mossley.

If we could have seen the new surface below the deep covering of snow we could have contrasted this improvement with the dredging works above Scout tunnel. I hope the general public do not take these improvements to be restoration. When you write to G.M.C. and Kirklees expressing the need for full scale restoration remind the Councils what happens when a cash starved BWB has to deal with a problem canal in the most economical manner possible. We need the full support of our local councils.

I would like to use my report this time to expand on details of future plans for working parties, only briefly mentioned last issue.

First, our plans for plant maintenance will be that our 3" pump and later our barrow hoist will be moved into the outhouse at Tunnel End for renovation in relative comfort. Our van will be taken to Droitwich, weather permitting, where the engine and gearbox will be swapped (as it's been in a snowdrift for the last week we are keeping our fingers crossed). Why Droitwich? well two reasons, that's where the engine and gearbox are, they have workshop facilities and we may get the chance to see how restoration work is progressing there.

Second, Easter work camp, this will not be a large Big Dig job, more an attempt to finish off outstanding work prior to the official opening. Work still to be completed as of 1st February includes painting of gates and gear, pointing of lock chambers, dredging and landscaping. Accommodation is arranged from Thursday night to Sunday night, £1.50 per night to cover food etc. Oh yes, anyone fancy volunteering to be cook? Map and any other details, if needed, from me.

Third, as Keith Gibson reported last issue, our success in getting restoration started has left me in particular with a problem. After Uppermill there is not a site, in the short term, on the canal where volunteers can go to. So, we shall be on the lookout for sites on other canals where volunteers can work. Ideas please.

As and when we get a programme together it will be published in future Pennine Links. We shall be trying in the meantime to get another volunteer site on the canal.

*Graham Maskell*

## The Diggle Hotel

**HIGH QUALITY HOME-  
COOKED LUNCHES  
MONDAY-FRIDAY  
EVENING BAR SNACKS  
SATURDAY LUNCHTIME  
BASKET MEALS/SNACKS**

*Yours Hosts:*

**Pam & David Jowett  
Margaret & Clifford Bucknall**

**FREE HOUSE**

**Diggle, nr Oldham.  
Tel: Saddleworth 2741**



As mentioned last month we are returning to the Coach & Horses at Standedge to hold our AGM. As usual the business part of the meeting will be followed by a slide/film review of our activities but this year it will be of 10 years events instead of just the previous year. If you have any suitable, funny, or otherwise (?) slides please let Bob Dewey or myself have them to include in the show. The evening will conclude with a pie and peas supper and disco and I would be grateful if you could let me know before the night if you would like pie and peas so that I can advise the landlord of numbers.

*David Finnis*

## increasing subs

With the A.G.M. looming up, the question of the subscription rates has been discussed in Council. Most of you will have realised that the subscription has been kept very low compared with many other societies and in fact barely covers the cost of providing you with Pennine Link.

This has always been deliberate policy but the Council recommends that, to give a little leeway, the subscription be raised by £1. This will hopefully cover increased printing costs which may be anticipated.

Many of you give more already and for that we are most grateful. Moving forward for the Society is not cheap and there can be no doubt that if the restoration is to keep up the momentum, the costs will be high.

The Council asks you to support the recommendation.

### PRINTING

Tickets, Cards, Notepaper,  
Bazaar Tickets,  
Draw Tickets, Advertising/  
Fund-Raising Pens, Pencils,  
Diaries, etc.  
Notepads.

**Kirkfield Press**

Dewsbury 462875 anytime

### Saddleworth Tree Services

Trees Felled,  
Pruned, Lopped,  
and Planted.

ESTIMATES FREE

**Telephone:**  
**SADDLEWORTH**  
**6448**  
**Anytime**

HUDDERSFIELD CANAL SOCIETY LIMITED

NOTICE IS HEREBY GIVEN THAT THE FOURTH ANNUAL GENERAL MEETING OF THE ABOVE NAMED COMPANY WILL BE HELD AT THE COACH & HORSES PUBLIC HOUSE, STANDEDGE, MARSDEN, HUDDERSFIELD, WEST YORKSHIRE, ON FRIDAY THE 27th APRIL, 1984 AT 8.00 p.m. TO TRANSACT THE FOLLOWING BUSINESS.

- A. To receive and adopt the Accounts for the Company for the year ending 31st December 1983, together with the report of the Council of Management and of the Auditors thereon.
B. To re-elect the Auditors and to authorise the Council of Management to fix their remuneration.
C. To re-elect Trevor Ellis as a member of the Council of Management retiring by rotation.
D. To re-elect Jean Buckley as a member of the Council of Management retiring by rotation.
E. To re-elect Suzanne Andrea Gibson as a member of the Council of Management retiring by rotation.
F. To elect Hazel Maskell as a member of the Council of Management co-opted during the year.
G. To consider any other nominations.
H. Any other business. To consider the recommendation of the Council that ordinary/family membership should be increased to a minimum of £3.50 per annum.

Dated this First day of March 1984

By Order of the Council

[Handwritten signature]

Secretary

Registered Office: Ramsdens, Ramsden Street, Huddersfield.

N.B. A Member entitled to attend and vote at the Meeting is entitled to appoint a proxy to attend and vote on his behalf. A proxy must also be a Member of the Company.

I/WE

form of proxy

of

in the County of

being a Member/Members of

the above-named Society hereby appoint

of

of failing him

of

as my/our proxy to vote for me/us on my/our behalf at the Annual General Meeting of the Society to be held on the 27th day of April 1984 and at any adjournment thereof

SIGNED

this

day of

1984

# PENNINE LINK

SELF-ADHESIVE SIGNS  
· STICKERS ·  
TRANSFERS



Where there's a need for plant equipment, there's a need for Pearlan Decals.

Made to your individual requirements — in tough self-adhesive vinyl. Contact us for a quotation stating size, quantity and number of colours.

**PEARLAN DECALS LTD**  
18 Hereward Rise, Halesowen,  
West Midlands.  
Telephone: 021-560 8116

Equipment  
Supplied by



Now has over 30 crafts including:  
ADVERTISING DESIGN, ART GALLERY, WOODEN TOYS, LEATHER CRAFT, PAINTINGS,  
GLASS CRAFT, CLOTHES DESIGN, SOFT FURNISHINGS, CHINA CRAFT, PICTURE FRAMING,  
WOOD TURNING, MODELLING, KNITTING & CROCHETING, SOFT TOYS, ORNAMENTAL  
BRASS & COPPER, T-SHIRT PRINTING, GARDEN CRAFT, WEAVING, TOY EXCHANGE,  
ANTIQUE BOOKS, CRAFT & HOBBY MATERIALS, WOODCARVING, INTERIOR DESIGN,  
APPLIQUE, POTTERY, FURNITURE RESTORATION, KILT MAKER, PLUS TEAROOM & CAFE.

Open Wednesday — Sunday 10.30-4.30



Please use museum car park

**UPPERMILL**

## Grompton Batteries Ltd

Supply Automotive batteries for car and diesel engine starting, Traction batteries for fork trucks and electric milk floats and of course batteries for electric boats.

Local depots at:

Manchester — 0204 700927/700902

& Leeds — 0632 776457/790639

Quiet, pollution-free transport  
takes to the water...  
The Huddersfield canal electric  
boat is powered by

## CHLORIDE

Chloride Industrial Batteries Ltd., P.O. Box 5,  
Swinton, Manchester M27 2LR, England

## THE LITTLEFORD GALLERY

Specialising in High Quality Paintings and Sculpture  
Original Oil Paintings, Watercolours, Pastels etc  
Artists original and signed limited edition prints.  
Individually made Pottery, ceramics, shipware, glassware and  
woodcraft.

Commissions accepted by established artists specialising in  
Landscape, Portrait and Wildlife.  
Old Paintings bought and valued.  
Exhibitions by selected artists and groups

### OPENING TIMES

WEEKDAYS — 11 a.m.-4.30 p.m.

SAT., SUN. — 11 a.m.-5.30 p.m.

CLOSED TUESDAY

**THE LITTLEFORD GALLERY**  
**ALEXANDRA CRAFT CENTRE,**  
**HIGH ST., UPPERMILL, OLDHAM**

Telephone: Saddleworth 3094

## J. GROWTHER (ROYTON) LTD



### MARINE ENGINEERS

EDEN WORKS, HONEYWELL LANE,  
OLDHAM, LANCOS OL8 2JP.

Tel: 061-652 4234/5

WE DESIGN AND MANUFACTURE PROPELLERS AND STERN  
GEAR TO CUSTOMERS OWN REQUIREMENTS  
PROPELLERS MANUFACTURED UP TO 30" DIAMETER  
AND STERN GEAR UP TO 3"

WE HAVE A REPAIR SERVICE FOR PROPELLERS

WE OFFER PROMPT SERVICE  
FOR ALL DEMANDS SMALL OR LARGE

PUBLICATION OF AN ADVERTISEMENT IN 'PENNINE LINK' SHOULD NOT  
BE TAKEN TO IMPLY HUDDERSFIELD CANAL SOCIETY APPROVAL OR  
RECOGNITION OF THE GOODS OR SERVICES ADVERTISED.



We now have a heating installation in our exhibition centre at Tunnel End, which should make conditions there more pleasant for the volunteers manning the sales counter. The cottages have remained open throughout the bad weather, though of course the number of visitors has fallen. Thanks are due to those who braved the elements to keep things running. More volunteers are still needed to spread the load — if you can spare a Saturday or Sunday every 2-3 months, please give me a ring on Huddersfield 34666.

There is a cloud on the horizon. BWB have announced their intention of starting work on the long-delayed spillway for Tunnel End Reservoir, which has become necessary under recent legislation. This work will result in a very large hole in the ground on the access to the cottages for about twelve months. We are monitoring the situation carefully and I have written expressing our concern about the likely effect on our operations. It seems certain that there will be some effect on visitors as car parking will be much reduced, even if a pedestrian route is maintained. Use of our trip boat from the cottages will be ruled out as the canal is to be drained.

*Trevor Ellis*

## **appeal to whisky drinkers**

There is a certain brand of whisky whose name may ring a Bell with you. When you buy a bottle there is a golden tag hanging round the neck. If you haven't noticed there is the story of a bell on it and there are 42 different ones to collect.

One of our regular meeting places the Diggle Hotel has informed us that if one collects the whole set the manufacturer of the whisky gives away a range of prizes and also gives donations to charities.

If you can help to collect some or part of a set, please forward the tags to Mr R. Stiles, 94 Hindes Road, Harrow, who has kindly agreed to help our Society.

## **new tourism officer for kirklees**

David Wyles, the Kirklees Planning Officer who has been closely associated with work on the canal-towpath improvement works, picnic areas, etc., and most recently the Marsden-Slaithwaite project has been appointed Kirklees Council's Tourism Officer. We wish him well in this new post and hope that the association between him and HCS can continue.

## marsden-slaithwaite project approved by councils

Friday 9th December 1983. Monday 9th January 1984. Historic days for Huddersfield Canal Society and for the Huddersfield Narrow Canal!

On 9th December, Kirklees Council's Development and Technical Services Committee considered a report on the proposed restoration of the canal from Tunnel End, Marsden to the centre of Slaithwaite. On 9th January a similar report was considered by West Yorkshire County Council's Recreation and Arts Committee. Both committees agreed to the proposal. So, that's it: its official! Restoration of the Huddersfield Narrow on a large scale should soon begin.

The project involves the restoration of nearly three miles of canal and 19 locks, here by means of a Manpower Services Commission sponsored Community Programme scheme employing about 50 people on the canal with others working in a workshop where lockgates will be built. The cost to the two Councils will be about £154,000, and the work should take about two years. An engineer from West Yorkshire's Dept. of Planning, Engineering and Transport, Ian Preston, has been seconded to the project.

According to County Councillor John Sully, Chairman of West Yorkshire's Recreation and Arts Committee, it is hoped that work will start in April. Whether that will be possible depends on negotiations between the Councils, the Manpower Services Commission and the British Waterways Board. Apart from such matters as agreement between the Councils and the Waterways Board on the future maintenance of the restored canal and providing the

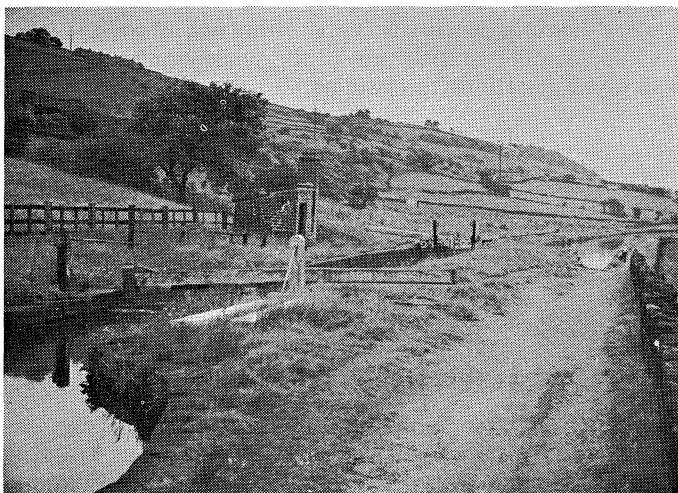


Photo shows a once gated Lock 30E at West Slaithwaite

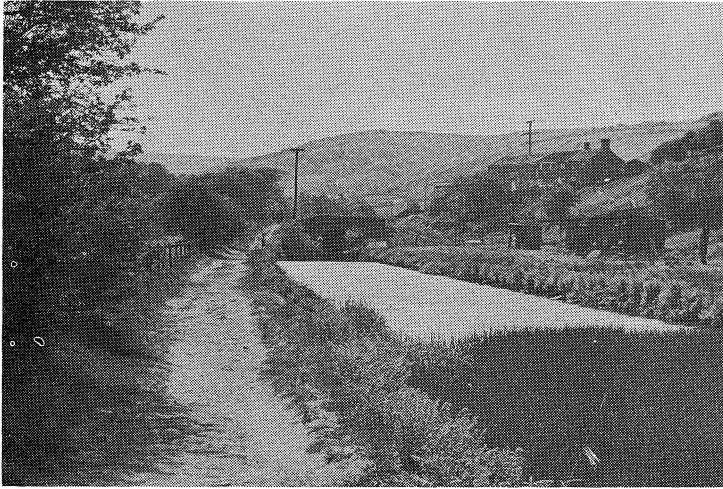


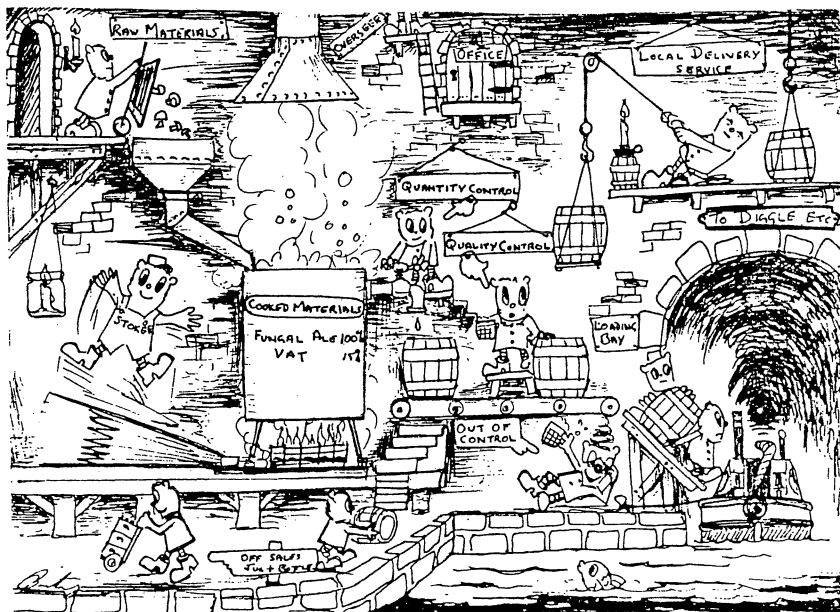
Photo shows canal view looking towards West Slaithwaite. Photo: D. Finnis

lockgate workshop, the final approval of the Manpower Services Commission could prove the biggest obstacle. As I reported in the last issue, there is an embargo nationwide on the approval of new Community Programme projects because the scheme has been so successful that it could exceed its budget. Provided the embargo is lifted and the other matters resolved then work should start soon. Kirklees have instigated negotiations for the lease of suitable premises for a lockgate workshop and are investigating whether grant-aid from other sources can be obtained. Agreement over land for tipping dredgings for the first year of operation has been obtained.

Not only will the project see the restoration of the beautiful rural section of canal between Marsden and Slaithwaite, it has also been extended to include the length of the canal between Queen Street South and Wakefield Road in Huddersfield which we had suggested may be a suitable project for volunteers to restore. This length, about  $\frac{1}{3}$  mile long, alongside and beyond the Polytechnic includes the first two locks on the east side of the canal — so that's a total of 21 locks to be restored.

Although there is still some way to go before we can say work will definitely commence on a specific date it does not seem premature to say that congratulations are due. First of all to the Councillors of Kirklees and West Yorkshire who approved the project, and to their Officers who have done a great deal of work in preparing for it. To British Waterways Board for allowing the work to go ahead and to the various members of this Society who have put a great deal of time and effort into ensuring the success of the project. Also to the other Societies involved with us in first proposing the scheme: Marsden Community Association, Colne Valley Society, Slaithwaite and District Angling Club and Pennine Heritage.

*Keith Gibson*



**THE DIGGLES ARE GETTING READY FOR THE  
DIGGLE BARREL ROLL — ARE YOU?**

**Craft Stalls — Barrel-Rolling and  
Canal Events planned.**

**at SAM ROAD, DIGGLE, 12 noon  
on GOOD FRIDAY, APRIL 20th.**



**organised by the Huddersfield Canal Society**

If you could help organise or run this event please  
'phone Jean Buckley on 061-624 4881 or Peter Freeman  
on Heywood 64468.

## 1984 huddersfield canals festival

5th/6th MAY 1984

Hands up if you remember the last Canal Festival in Huddersfield. You do! — in what year was it? 1980? 1979? Unbelievably it was as far back as 1977. Yes it's seven years since Diggles were sighted rowing the Narrow canal by the Polytechnic, since volunteer workers stood thigh high in mud clearing the chamber of Lock 1, since visiting boats lined the towpath back to the turnbridge from Aspley basin.

"Time there was another" was a comment increasingly heard, and so the Huddersfield Canals Festival 1984 version appeared on the drawing board. Canals — plural — is the operative word, for not only will the Festival add more impetus to the ever-rolling campaign to restore the Narrow, But it will be a Festival with the Broad canal very much in mind too.

Since the Calder Cruisers fleet moved from Aspley basin, visiting boats making their way to Huddersfield are something of a rarity. The Festival will change that. Brighouse Boat Club will be attending in force, and we expect to see craft from further afield too — the Leeds & Liverpool, Aire & Calder, Doncaster, and elsewhere. Aspley basin will once again bustle to the tying ups, casting offs, and swabbing downs of a flotilla of small boats. For many of them Aspley basin will become the starting point of a journey to Hawkesbury junction and the National Rally.

Not all the boats will be that small though, for it is hoped to bring back to Huddersfield one of the few remaining woodencraft (West Country barges) that formerly plied the Calder & Hebble and the Huddersfield Broad in their heyday.

Waterways World plan to carry a feature on the Broad Canal in the May edition as part of the build up to the Festival, and of course we shall be mounting our own press and radio campaign in the fortnight leading up to the festival.

The basin will be the main Festival site — trade show, entertainments, competitions, sideshows, exhibitions will provide all the useful fun of the festival, plus of course Boat trips along the Broad canal, and a few surprises as well.

An enthusiastic team from HCS and the Boat Club are working hard to get the event off the drawing board and make it a reality.

Ample car parks are being made available close by, and we hope the visiting public will be counted in their thousands over the weekend 5th/6th May. You, of course, as a reader of Pennine Link, will be especially welcome. Do come along and enjoy Huddersfield Canals Festival '84.

If you would like further details on any aspect of the Festival contact Dave Finniss who is Festival Chairman on Huddersfield 846087, or Publicity Officer Peter Spence on Halifax 201580.

*Peter Spence*

## **a few reflections on restoration**

It is, perhaps, worthwhile to consider how we have achieved success in persuading Kirklees and West Yorkshire Councils that it is right for them to carry out the Marsden-Slaithwaite and Locks 1 and 2 East restoration project. That we are not just a bunch of oddballs, but a responsible Society proposing something of benefit to the whole community and not just to a few. It is also worth reflecting on why it has taken 10 years to achieve this major breakthrough.

First of all we have to realise that our local councillors and the officers who work for them are generally responsible people who have learnt they cannot accept that what every individual or group wishes them to do is in the best interests of the community. The facts of the case have to be properly presented and proved to them. Dedicated enthusiasm alone is not enough; and that's as it should be — we cannot expect to achieve any success in persuasion unless we are right and can prove it. Secondly, like everyone else these days, they have to work to a very tight budget. Canal restoration is not an essential service like education or emptying the dustbins. There is inevitably tremendous competition for what limited funds are available for anything other than these services. It's easy to see why it's a long term project we have embarked on, particularly as the 1968 Transport Act effectively prohibits the British Waterways Board from allowing any work on the canal unless its future maintenance is underwritten by a body such as the Local Authorities.

A little self congratulations is in order here. As a Society we are so often full of doom. Things don't seem to happen fast enough. There are complaints about spending on glossy reports or the exhibition at Tunnel End rather than on actual restoration work. These things are worthwhile, though. They do bring results, given time. The Society's first priority was to ensure that the canal remained as it was, that no further building was allowed over it, and, to a large extent, that policy has now been adopted by the Local Authorities along the length of the canal. The second priority was to show that restoration was possible and that it was desirable. The Uppermill project and the exhibition centre at Tunnel End have proved that. Only then could the Society begin with any hope of success to persuade the Local Authorities that restoration was not just desirable but essential, and that we desperately needed their help to restore the canal.

So in December 1982 the Society, in association with Marsden Community Association, Colne Valley Society, Slaithwaite and District Angling Club and Pennine Heritage, was able to publish a report proposing the project which has now been given the go ahead. We also produced a report on the job creation potential of a restored Huddersfield Narrow Canal. The validity of the case we put forward then is proved by the fact that in little more than a years time the two Councils have considered our reports and decided to adopt the projects. It sounds easy, but a great deal of work has been involved by the members and officers of the Councils as well as by members of this Society. Both officers and members of the two Councils are now enthusiastic for restoration of the canal, subject, of course, to the financial restraints placed upon them.

---

## PENNINE LINK

---

The Chairman of the two Committees concerned, Councillor George Speight and County Councillor John Sully, and other members and officers of the Councils have seen the canal and the benefits of restoration. They have looked not just at Marsden-Slaithwaite, but at other areas and, in particular, at Standedge Tunnel. Kirklees' Development and Technical Services Committee has formed a separate Canals Working Party, on which members of the County Council also sit. The County Council's Engineering Officers have been asked to find out the cost of a structural survey of the tunnel. So, in general, prospects for the future look good. Not only in Kirklees, but in the Oldham and Tameside Districts too. Progress is slow, but that is only to be expected in view of the nature of what we propose. Kirklees and West Yorkshire have not been slow in responding to our proposals for Marsden-Slaithwaite, or in adding the Locks 1 and 2 East scheme to the project. Other projects should follow.

*Keith Gibson*

### **statement re unicon marine and the huddersfield canal society trip boat**

I am pleased and proud to assist the Huddersfield Canal Society in their exciting venture to restore the Huddersfield Narrow Canal to navigation.

Unicon Marine Limited has acquired a 70' double-ended narrowboat and we are at present refurbishing this boat ready for leasing to the Canal Society for their operation at Uppermill. The boat is being restored at our Whaley Bridge base from where we hire holiday narrowboats under the name 'Peak Line'.

The restoration and amenity use of hitherto derelict waterways involves all sections of the community. Volunteers can clear canals and even reconstruct locks. Local authorities can give support via maintenance commitments and funding. Central government can help with grants and private companies like my own can then provide some of the services to help the public enjoy a recreated amenity. I am certain that this trip boat will fulfil a need in Uppermill and demonstrate to local authorities the value of restored waterways.

*G. H. Wainwright*

## **planning news**

Kirklees Council have published their draft Local Plan for the Colne Valley for public comment. This relates to the part of the valley between the District boundary at Standedge and Milnsbridge, and sets out what the Council believe planning policies for the next ten years or so should be. It contains two major policies relating to the canal on which the Society has been consulted. These show that the importance of the canal has been fully recognised by Kirklees.

Policy CV/L12 states:

The Council supports the progressive improvement and restoration of the Huddersfield Narrow Canal to navigation throughout its length accordingly:

- i) The Council will not permit any further infilling of the canal or any further development on previously infilled sections. In exceptional circumstances development encroaching on the bed of the canal or its towpath may be permitted, provided that either
  - a) provision is made for a clear and appropriate route for the canal and the towpath to bypass the development.
  - b) the development provides for navigational clearance along the present line of the canal and the towpath.
- ii) The council will encourage the removal of obstructions to navigation (e.g. culverted bridges) or clearance of buildings built on the line of the canal.

It is followed by Policy CV/L13 which says that:

The Council will, in conjunction with the County Council, the British Waterways Board and the Canal Society, promote increased recreational use of the Huddersfield Narrow Canal and the River Colne, particularly by:

- i) Environmental improvements within the river and canal corridor, through the reclamation of derelict land, the treatment or bringing into use of vacant land, the clearance of derelict buildings and landscaping, as resources permit.
- ii) The signposting of existing public footpaths to the towing path, footpath improvements, and the creation of new links where necessary.

Effectively, these policies mean that the line of the canal, including parts infilled, should be secured from any form of development preventing its restoration, and that the Council has a clear policy of encouraging the removal of obstructions to navigation and carrying out improvements to encourage recreational use of the canal.

This plan completes the trio of local plans affecting the Narrow Canal within Kirklees (the others being the Huddersfield Local Plan and the Huddersfield Town Centre Plan) all with policies relating to protection and improvement of the canal. Clearly this is strong ammunition in our discussions with Councils on the other side of the hills, where Oldham Borough Council's Local Plan has reached the next stage of the process which councils have to follow in adopting a Local Plan. The Council have put the plan on deposit for the public to make formal objections. If such differences cannot be resolved there has to be a Public Inquiry chaired by an Inspector from the Department of the Environment.

This plan whilst having a policy intended to protect the alignment of the canal through Saddleworth says that any development affecting the canal will not 'normally' be permitted. Whilst that may be satisfactory in theory it does leave a significant loophole for exceptions to the policy and your Society has objected to the policy. The Public Inquiry into the plan is to be held in Oldham from 27th March to 13th April at which we will be represented. Any local members wishing to support the Society's case are requested to seek details from HCS Secretary Bob Dewey.



One of my ambitions is to follow the old boathorse route over Standedge. As those of you who were on the walk in December know, I didn't manage to cover any of the journey. I jumped off a small stone wall onto the canal towpath and ruptured a ligament in my knee. A spell in hospital and six weeks with my leg in plaster saw me through the Mikron 'quiet period'. Now we're hard at it again preparing for our 1984 tours and, I hope, by the time you read this I shall be leaping around like a young gazelle again!!

We shall be spending seven weeks researching, writing and rehearsing our new show which this year is going to be the story of the Manchester Ship Canal (we decided we had to write this now while the canal is still open!) Then, before setting off, we shall work on a new production of *STILL CARRYING*, which tells the story of our own narrowboat, 'Tyseley'.

You'll be pleased to hear that Mark Williams is staying with us for another year. He's been joined by two actresses new to the company, Sue Dyde and Caron Andrews. We shall be on the waterways from April 15th-September 1st travelling over most of the system. We shall, of course, be at the National Waterways Festival in Coventry at the end of August.

Our South Pennines Tour will be from September 24th-November 10th. In addition to *STILL CARRYING* and our Manchester Ship Canal Show you'll get a chance to see *FROM WHERE I STAND*, our production about hilltop farmers. Please come and support us and have a good evening out with a pint or two!

If you would like a copy of our 1984 Waterways itinerary or, later in the year, our South Pennines itinerary, please send a stamped addressed envelope(s) to:

**MIKRON THEATRE COMPANY**  
31 WAREHOUSE HILL, MARSDEN, HUDDERSFIELD HD7 6AB

Finally, on behalf of the rest of the Mikronites, I would like to congratulate HCS on its tenth birthday. The Society is now going from strength to strength and we're certainly looking forward to having 'Tyseley' tied up on the wharf outside our cottage in Marsden. We owe a lot to those few who in 1974 decided that restoration was both desirable and possible.

*Mike Lucas*

## **canal & river tour 1984**

### **APRIL**

#### **Huddersfield Narrow**

Sat. 14 The Railway, Station Road, Marsden 8.00\*\*

#### **Leeds and Liverpool**

Tue. 17 The Railway, Appley Bridge, nr Wigan 8.00\*

Wed. 18 Lathome Slipway, Crabtree Lane, Burscough 8.00\*\*

Thu. 19 Crooke Hall Inn, Crooke, nr Wigan 8.00\*\*

#### **River Weaver**

Sat. 21 Leigh Arms, Little Leigh, nr Weaverham 7.30\*\*

## **dungebooth lock "uppermill"**

We are pleased to announce a remarkable offer that will be attractive to all canal lovers and especially to well-wishers of the H.C.S. We are obtaining a limited edition of 250 full colour prints of a beautiful water-colour painting of Dungebooth Lock, Uppermill, painted within a week of the first lock gates being hung.

The work, which was commissioned by H.C.S. member Mrs. Anne Wright of Dobcross and which is being copied with her kind permission, is by David Ford, who is undoubtedly Saddleworth's most popular water-colour artist and has exhibited at the Royal Academy Summer Exhibition.

The prints, which measure 15" x 11" (380mm x 280mm) can be purchased mounted only (for postal delivery) or mounted and framed in a polished wood frame, overall size 20½" x 16½" (520mm x 420mm) for delivery local to canal or for collection.

Each print will be numbered and signed by the painter and will have a descriptive label on the back, explaining the significance of the painting.

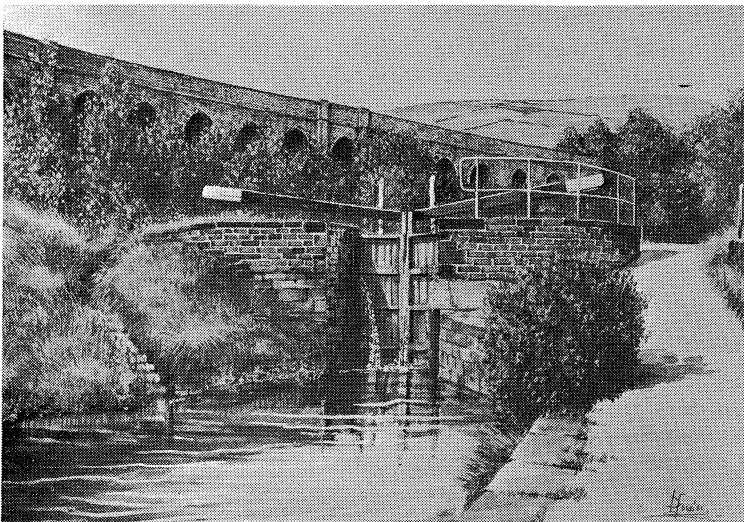
Prices are as follows:—

Print, double mounted in white and dark green in a polished wood/gilt frame, ringed and strung, ready for hanging £12.50

Print, single mounted in dark green, unframed, including packing and postage £8.00

Please send cheque with order to Jean Buckley, 37 Edward Street, Oldham.

By kind permission of the owner, Mrs. Anne Wright of Dobcross, Saddleworth



Photograph by Kedrick Whitehead

Dear Editor, 10 Stanford Terrace HASSOCKS West Sussex BN6 8JF

I had been "umming and arring" for some time, whether to reply to Jean Wrigley's letter about Stalybridge in Pennine Link No.54, when the latest issue of "Waterwitch" complete with Greenway's Grommets, plopped on our doorstep recently. We do seem to have started something! Let me elaborate on what happened when we went to Stalybridge.

During our visit to the town, we attempted to buy our lunch (for twelve of us, including a child) from a fish and chip shop at least 15 minutes before their advertised closing time. It transpired that there wasn't enough for all of us, and they weren't prepared to cook any more, something that rather surprised us. We tried some lighthearted persuasion, to no avail, so eventually we left the shop somewhat disappointed and hungry. As we left, it was rather unpleasant to be told they thought we were a bunch of stuck-up southerners, whose business they were more than happy to be without.

This particular instance was the only time we had this sentiment expressed to our faces, but it was not the only time we encountered total indifference to visitors by traders in Stalybridge. Since it contrasted sharply with our reception elsewhere on our cruise, I don't really believe it is because we are a "bunch of stuck-up southerners".

After your publication of John Greenway's bit in "Pennine Link", the story was then picked up by a local paper under the heading "Cheeky Southerners Slate Stalybridge" — the implication being "how dare anybody from the SOUTH criticise us"! In view of what we went through, I think we had a right to moan about it.

The next thing we see in "Pennine Link" is Jean Wrigley's letter, which gave the impression that various HCS officers, the Local Civic Society, etc., were upset at "our" views on Stalybridge. None of them took the trouble to find out just WHY we got this impression of the town. "Wey-South" have cruised the inland network fairly extensively and nowhere have we come across a similar reaction to tourists.

We hear from various sources that the HCS are making great progress in their discussions with local authorities on community projects to restore the canal. Dare we say some effort should be concentrated on informing the local community on the probable impact of a restored navigation, so that the local traders don't "blow" their reputation at the first sign of a visitor? This is where any benefit from publicising our comments should lie — an encouragement to make sure the next canallers to visit Stalybridge don't get the treatment we did.

Okay, so one day of our holiday (and don't forget it was our holiday) was spoiled by what happened, and we have an unfair advantage in having a platform (via the pages of "Wey-South") to voice our opinions. But, of course, we didn't reckon on Mr John Greenway broadcasting our little tale of Stalybridge! But what's happened to your sense of humour? Look at all those ghastly jokes we have to endure about Bognor Regis, and the famous comment on a British Rail ferry advertisement: "Newhaven for the Continent"

## PENNINE LINK

under which some bright spark had written "Worthing for the incontinent". Then there is Milton Keynes, Wigan Pier, Selly Oak, Croyden, etc. I didn't realise anyone outside Princes Risborough took John Greenway seriously, least of all the man himself! If your Council members are going to throw a wobbler every time a piece of healthy, funny criticism is printed in "Pennine Link", then the Grommet prediction will come true. Don't lose your grip on reality, otherwise all is lost.

Finally, with my tongue firmly planted in my cheek, I reckon this Stalybridge business was all one of David Finnis's little publicity stunts — a remark I'll no doubt be made to pay for some day!

Best Wishes,  
**Sally Thomson**

### Shropshire Union

- Sun. 22 The Boat Museum, Ellesmere Port 3.00\*\*  
Tue. 24 Shady Oak, Tiverton, nr Tarporley 7.30\*  
Wed. 25 Bridge Inn, Audlem 8.00\*\*  
Thu. 26 Talbot Inn, Newcastle Road, Market Drayton 7.30\*  
Fri. 27 The Anchor, Old Lea, High Offley, nr Woodseaves 7.30\*  
Sat. 28 Wild Hollow, Monks Walk, Gnosall 3.00\*\*  
Sun. 29 Wolverhampton Boat Club, Barnhurst Lane, Bilbrook,  
Wolverhampton 2.00\*

\* Still Carrying

\*\* Our new production (as yet untitled)

## THE PEAK AND PENNINE LINE...

narrowboat cruising at its best ...

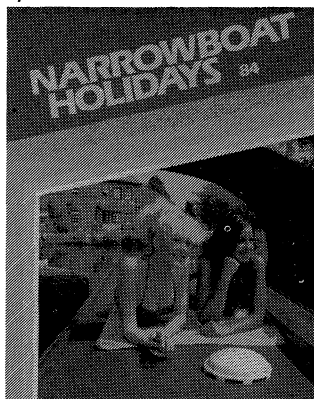
Our canal cruising holidays offer an unrivalled variety of routes, scenery, boats and prices.

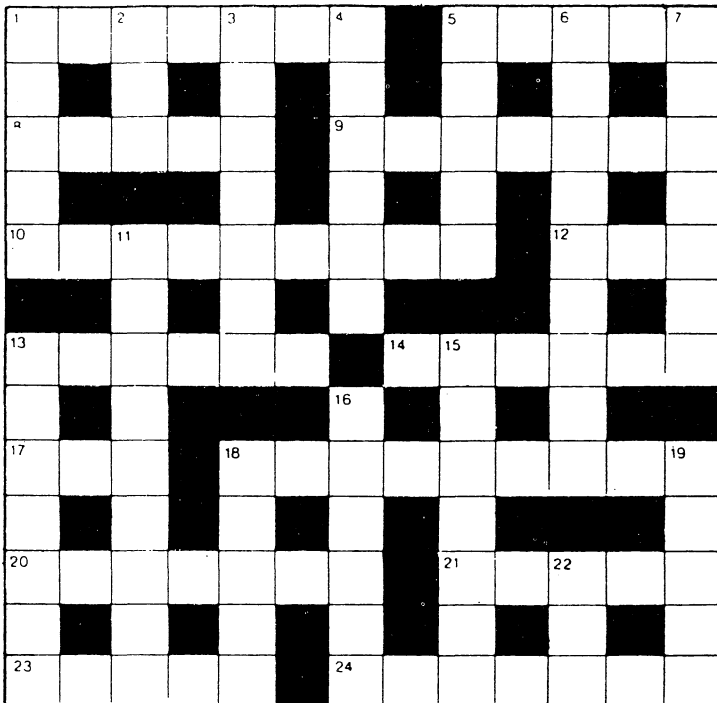
Cruise through the glorious Yorkshire Dales, National Park on the Leeds/Liverpool Canal — enjoy the scenic delights of the Cheshire ring and pretty Peak Forest Canal in Derbyshire.

Free 'Two Base' colour brochure from:

**The Holiday Booking Service,  
21/23 High Street, Gargrave,  
Skipton, North Yorkshire.  
Tel: Gargrave (075 678) 8105**

**'A UNICON MARINE  
PRODUCTION'**





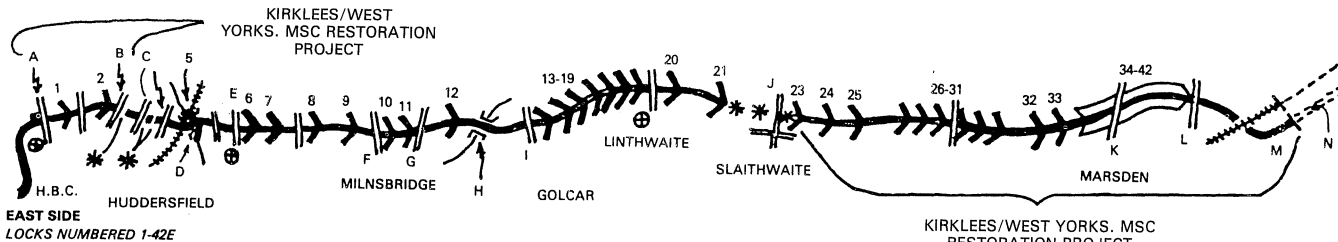
**CLUES ACROSS**

- 1 Bargees for instance (7)
- 5 Wanes (5)
- 8 16th century style (5)
- 9 Watertight chamber (7)
- 10 Child (9)
- 12 First lady! (3)
- 13 Hate (6)
- 14 Landed property (6)
- 17 Tree (3)
- 18 Floating dwelling (9)
- 20 Escape (7)
- 21 Motionless (5)
- 23 Object to (5)
- 24 Tunnel dwellers (7)

**CLUES DOWN**

- 1 Old narrow boat (5)
- 2 Help (3)
- 3 Illusions (7)
- 4 Precise (6)
- 5 Tuck maybe (5)
- 6 Ruffian (9)
- 7 Genuine (7)
- 11 Threat maybe (9)
- 13 Cleared silt (7)
- 15 Doing the meat and veg? (7)
- 16 Tied to a mooring (6)
- 18 Carver (5)
- 19 Carries (5)
- 22 Fish — sort of (3)

Kindly sent in by Mr J. Crosland



The Huddersfield Narrow Canal — built 1793—1811. Engineer: B. Outram. Closed: 1944. Last recorded passage across Summit: 1948. Restoration began 1981. Length: 19 7/8 miles. Summit pound: 645 ft. above sea level through Standedge Tunnel — 3 miles 418 yards long.

H.B.C..... Huddersfield Broad Canal

A.C..... Ashton Canal

A..... Wakefield Road

B..... Queen Street South

C..... Manchester Road

D..... Paddock Foot Aqueduct

E..... Stoney Battery

F..... Market Street

G..... Morley Lane

I..... Golcar Aqueduct

L..... Station Road

M..... Tunnel End Cottages

N..... Standedge Tunnel

O..... Wool Road Warehouse and

Brownhill Visitor Centre

P..... Saddleworth Aqueduct

(old Sag)

Q..... Uppermill Museum

R..... Royal George Aqueduct

S..... Egmont Street

T..... Scout Tunnel

U..... Warehouse Hill

V..... Hartshead Power Station

W..... Mottram Road

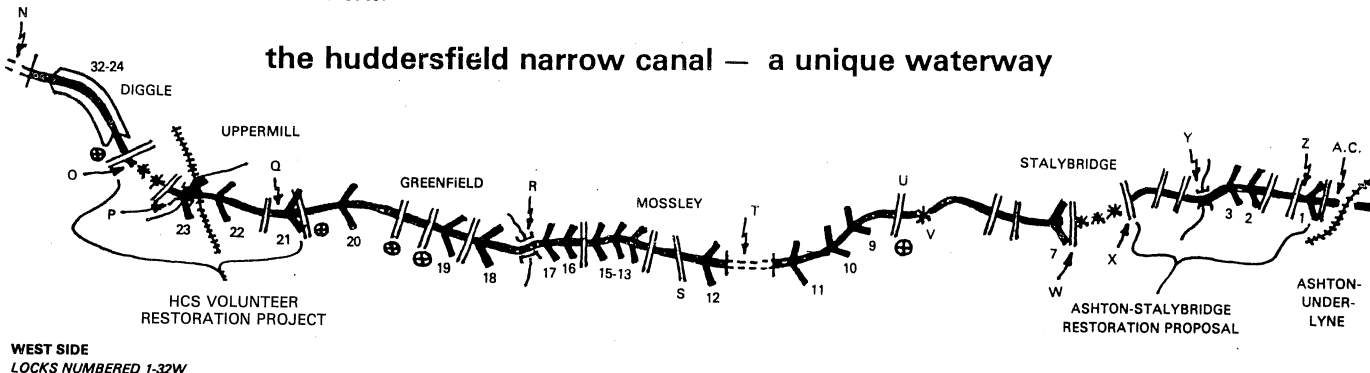
X..... Bayley Street

Y..... Stalybridge Aqueduct

Z..... Whitelands "Tunnel"

\*..... Infilled sections

+..... Culverted or lowered bridges



The Witters of Chester support restoration of the Huddersfield Canal — and would like all Diggles to know that at their canalside factories they make very good canoes, paddles, helmets and trailer towing brackets.

## holiday accommodation

Self-Catering, sleeps 2 alongside Kennet and Avon Canal, Wiltshire/Berkshire border. Tel: 0672 870245.

## pennine link advertising rates

	per issue	6 issues
¼ page	£2.00	£10.00
½ page	£3.50	£17.50
Full page	£6.50	£32.50
Classified ads 5p per word		
Box No. 50p		

## press date

Articles for inclusion in the May/June issue of Pennine Link must be received no later than 1st April.

## deeds of covenant

If you wish to help the Society further by paying your subscription under a deed of covenant then please write to or phone me for details.

*Sue Bradbury*, Treasurer

## press cuttings

If you see anything mentioning the Huddersfield Canal or the Society in newspapers, magazines, etc., please could you cut out and send to Neil Frazer, 84 Broomfield Road, Marsh, Huddersfield. Neil has now taken over as press cuttings officer.

## membership competition

Again there is a chance to take part in the membership competition. All you have to do is enrol a new member to the Society and on the form where it says 'I heard about the Society from...' they must fill in your name to be eligible to enter the competition. The lucky winner receives £5. This issue's lucky winner is Howard Strangeways.

# FRANK BENNETT

T.ENG, M.I.E.C.  
MARINE ENGINEER  
AND SURVEYOR

Tel. 061-303 0466

"Lynwood"

81 Lodge Lane, Dukinfield,  
Cheshire SK16 5JF

**PLEASE NOTE  
WE HAVE MOVED**

and I am now available from the above address and telephone number to undertake the Survey of All Inland Waterways Craft for B.W.B. Certificates of Compliance, Insurance/Damage Reports and Pre-Purchase Reports.

celtic  
canal  
cruisers  
ltd.



If you're hooked on canal boating, why not try a holiday on the Irish waterways. From our base on the Grand Canal you may travel West to the River Shannon or East to the River Barrow, offering a variety of routes. Easy access by car to our base via Holyhead/Dublin car ferry. Our fully equipped Narrowboats are built to high standards in England. For further details write or phone (direct dial) for our brochure. Celtic Canal Cruisers Ltd.,

Tullamore, Co. Offaly, Ireland.  
Tel. 010353506/21861. Telex 33738.



earthworm



services

WE ARE A SMALL FIRM OF GARDENERS WHO CARRY OUT ALL TYPES OF GARDENING WORK, FROM LARGE GRASS CUTTING JOBS DOWN TO SMALL "JUNGLE" CLEARANCES.

OUR SPECIALITY IS REGULAR GARDEN MAINTENANCE WHICH WE UNDERTAKE FOR FIRMS, HOUSES, PUBS, LOCAL AUTHORITIES, AND EVEN THE CHURCH. WE WOULD BE PLEASED TO QUOTE FOR ANY OF YOUR GARDENING NEEDS.

**EARTHWORM SERVICES**

5 PARKFIELD ROAD  
GRASSCROFT  
SADDLEWORTH, OLDHAM  
OL4 4JG  
TEL: SADDLEWORTH 6033

## PAINTINGS

INCLUDING NUMEROUS  
CANAL SCENES BY  
JAMES CROSLAND.

Visit the  
Spend and Save Gallery

**BYRAM STREET**  
Left Below  
**THE PRINCESS CINEMA**  
**HUDDERSFIELD**  
(Opposite New Monday Market)



Although the organisers of Toepath '83 are just about getting over last year's ordeal it is now time to start to consider Toepath '84. Would anyone who is interested in helping to organise this enjoyable fund-raising event please contact Alison Fisher, 46 Woods Avenue, Marsden, Huddersfield. Telephone: Huddersfield 842963.

P.S. If anyone still has not sent their sponsorship money for Toepath '83 would they please do so as soon as possible.



Photo shows cheque for £84.50 for Toepath '83 being presented by the Landlord of The Sair, Linthwaite, Ron Crabtree to Ian Mitchell — the Toepath '83 Publicity Officer with HCS Publicity Officer David Finnis watching on. Photo: Robert Carter

***Uppermill Official Lock Opening***

***Saturday 26th May 1984***

Craft Stalls, Canal Trips

and

Entertainments

For further details or if you can help  
with the event, 'phone Jean Buckley on

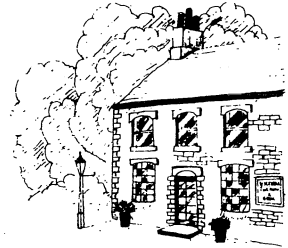
**061-624 4881** or

Peter Freeman on **Heywood 64468**

# Victoriana Tea Room and Grill

23 High st  
Uppermill

LICENSED



Tel. Saddleworth 3589  
after hours 5960

Tea rooms every day 10.00am-5.30pm Restaurant—  
**BISTRO NIGHTS + Weekly special £5.50 for two people +**  
Tuesday-Saturday 6.30pm-10.30pm  
**Sunday lunches and weekend grills**  
Next to Saddleworth Museum and car park!

## JOIN NOW

Your support is needed now. The more members we have, the more effective is our voice. Help to re-open the Huddersfield Narrow with your pen, your spade, your moral support or in any other way you have to offer.

To: The Membership Secretary, Huddersfield Canal Society, 38 Paris Road, Scholes, Holmfirth. Telephone: Holmfirth (048 489) 5022

I/We wish to join the Huddersfield Canal Society.

Name/s .....

Address .....

.....

.....

Postcode ..... Telephone: .....

Occupation .....

Amount enclosed £ ..... Cheque/PO/Cash

I heard about the Society from .....

### MEMBERSHIP RATES

Family membership £2.50. Junior (under 18) £1.00

Associate £5.00 (voluntary societies)

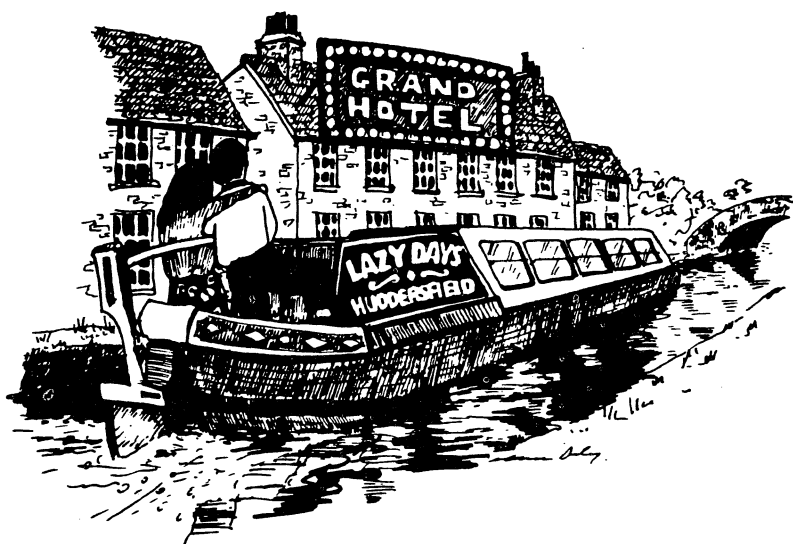
Corporate £10.00 (minimum) Life £50.00

Members receive free copies of 'Pennine Link', the society's bi-monthly magazine.





*Cast off with*  
**ROBINSONS CRUISERS - - -**  
**DEWSBURY**



- - - AND TAKE YOUR  
HOLIDAY HOME  
WITH YOU!

SAVILE TOWN, DEWSBURY  
Telephone: Dewsbury 467976

*Carefree comfortable canalling  
at its enjoyable best*

## **treasure hunt 25th march**

The Treasure Hunt will soon be with us and to date I have only received two entries. Surely you all have not been put off by previous events, or are you just scared at the possible course I might have arranged. I say might have, because at the moment I only have a rough idea as to where you will (or should) be going.

The starting place will be Tunnel End Cottages at Marsden, and weather permitting, the course will be somewhere in the South Pennines, finishing in a pub serving food and real beer. This year will see a slight change in the rules as it will not be the winners who have the task of organising next year's event, but the LOSER'S, that is if they arrive at the end of the course.

PLEASE enter NOW as we are only allowed a maximum of twelve cars, so it has to be on a first entered basis.

*David Finnis*

## **gagg visits the huddersfield**

The well known canal author John Gagg is the guest at our May meeting when he will present one of his illustrated talks about the waterways at the Zetland Hotel in Huddersfield. We would like as many members and friends as possible to turn out for John's talk.

## **burton to visit the huddersfield**

Not satisfied with one famous speaker this year we are also going to have the pleasure of Anthony Burton's company at our July meeting when he will also be presenting one of his infamous illustrated talks. A venue has not been finalised but should have been by the next issue of Pennine Link.

## **coach trip to ellesmere port boat museum on easter sunday 22nd april**

As many 'traditional boat' fans will already know the Ellesmere Port Boat Museum hold a 'Traditional Gathering' at Easter so we thought we would organise a Coach Trip to see the boats. In addition, Mikron Theatre are also scheduled to perform at the Museum sometime during the afternoon so it should certainly be worth the trip. Plans are still a bit 'fluid' at the moment but we intend leaving Huddersfield during the morning, picking up on the way up the Colne Valley and down the Tame Valley to Oldham and then via the motorway to the Museum. The cost has not yet been fixed but we anticipate it will be moderate for a full day's excursion. Further details from Stuart Moreton, Hill Top Farm, Binn Road, Marsden, Huddersfield, or Tel: Hudds. 844105.

## **flag day**

Following the success of last year's flag day when we collected nearly £150 we have now been allocated Saturday 17th November for another flag day this year. Please make a note of this date in your diary as we will need all the assistance possible on the day to ensure we beat last year's total.

## hcs 10th birthday party - 19th april 1984

Plans are underway to hold a birthday party to celebrate 10 years of H.C.S. and it is to be held at the Diggle Hotel, Diggle, where we always receive a warm welcome from the landlords, Pam & David Jowett and Margaret & Clifford Bucknall. Actual arrangements are not yet finalised but we would hope that many members and friends will attend. For the more daring Fancy Dress is optional, spot prizes to be awarded. As the day after is the Diggle Canal and Craft Fair I am sure that if anyone wanted to make a 'night' of the celebrations we may be able to find somewhere to pitch a tent (or two).

## huddersfield canals festival

As I'm sure you now know the Society has arranged a number of Festivals along the length of the canal this year. All of them are going to be very enjoyable I'm certain, but none more than the super fantastic mega-festival to be held at Aspley Basin, Huddersfield, on the 5th and 6th of May.

Among the entertainments planned are:

Brass Bands (including the Huddersfield Youth Brass Ensemble)

Clog Dancing by Marsden Pride ladies clog team and friends

Morris Dancing — Folk Groups — Trip Boats — Police Divers — Canoes — Boater's Quiz — and for the children would you believe a unicycling clown?

I think I can safely say that there will be a good time to be had by all. So come along and enjoy yourselves, it'll be a great weekend.

*Dave Irving*, Festival Entertainments Organiser

## national rally at hawksbury junction

This year's national is to take place during the weekend of 25-27 August at 'Sutton Stop'. Although it may seem a little early to start planning who is going etc., it isn't. If you will be going to the national please could you let us know to enable us to plan duty rotas etc., for our sales and exhibition stands. If anyone is going on a boat and can offer accommodation to our volunteers manning the stands please also let us know.

*David Finnis*

## coffee morning at hudds. town hall

We are holding a fund-raising Coffee Morning at Huddersfield Town Hall on Saturday 21st July, in the Mayor's Reception Room.

We are hoping to have the exhibition stand plus as many stalls as possible, providing we can get the helpers for 3 hours and the goods to sell.

Please give your support to this event, either by making buns, biscuits, cakes etc., or handicrafts or bric-a-brac of decent quality. Raffle gifts will also be welcome. If you can spare 3 hours to sell same, please let me know as soon as possible on Huddersfield 659748 and then we can have some idea of what is coming. Thanks in anticipation of a success.

*Anne Crosland*

We are pleased to welcome the following new members:

- 1144 Mrs Silvia Blagrove, [REDACTED]
- 1145 S. W. Doughty, [REDACTED]
- 1146 Edward G. Cobb, [REDACTED]
- 1147 Mrs Valerie Johnston, [REDACTED]
- 1148 John A. Davies, [REDACTED]
- 1149 Mrs F. Hesketh, [REDACTED]
- 1150 Robert & Shirley Maycock, [REDACTED]
- 1151 Ron Holden, [REDACTED]
- 1152 David Taylor, [REDACTED]
- 1153 S. Leslie Cropper, [REDACTED]
- 1154 Ray Mason, [REDACTED]
- 1155 Bob Burns, [REDACTED]
- 1156 Mr and Mrs S. Holland, [REDACTED]
- 1157 Duncan McKinley Bourne, [REDACTED]
- 1158 Charles Holland, [REDACTED]
- 1159 Mrs M. Burlinson, [REDACTED]
- 1160 Richard J. Cossey, [REDACTED]
- 1161 A. G. Olver, [REDACTED]
- 1162 Andrew G. Brown, [REDACTED]
- 1163 Barry Garthwaite, [REDACTED]
- 1164 Mr and Mrs G. R. Jordan, [REDACTED]
- 1165 Watch House Cruising Club, F. Reynolds (Sec.), [REDACTED]
- 1166 Nicholas & Jane Caunt, [REDACTED]
- 1167 Mr & Mrs Pollitt and Family, [REDACTED]
- 1168 Kevin Hodgson, [REDACTED]
- 1169 Anthony W. Wills, [REDACTED]
- 1170 John Carter, [REDACTED]

*Val Dewey*, Membership Secretary

**SOLUTION TO CROSSWORD NO.16**

ACROSS: 1 & 4—Swing Bridge, 9—Lanyard, 10—Gifts, 11—Etch, 12—Abstain, 13—Pal, 14,16,24—5Rise Locks, 18—Ivy, 20—Misused, 21—Pair, 26—Resist, 27—Pater.

DOWN: 1—Silted, 2—Ionic, 3—Goal, 5—Registry, 6—Defrays, 7—Easing, 8—Ideal, 13—Persists, 15—Insects, 17—Smiler, 18—Ideas, 19—Orator, 22—Apart, 23—Ship.

1st March	8 pm	Illustrated talk on 'Commercial Carrying' by Geoff Wheat at the Four Horseshoes, Milnsbridge, Huddersfield.
14th March	8 pm	Social Meeting at the Farrars Arms, Grasscroft, Oldham.
15th March	8 pm	Audio-visual presentation 'This is our Valley' by Geoff Wilson at Tunnel End Cottages, Marsden.
20th March	8 pm	'Natter and Noggin' at the Diggle Hotel, Diggle.
25th March		Motorised Treasure Hunt. Further details, David Finniss on Hudds. 846087.
28th March	8 pm	'Beer and Chat' at the Hornblower, off West Street, Sheffield.
1st April		Pennine Link press date.
5th April	8 pm	Social Meeting at the Sair, Lane Top, Linthwaite.
11th April	8 pm	Social Meeting at the Black Horse, Manchester Street, Werneth, Oldham.
19th April	8 pm	HCS 10th Birthday Party, Fancy Dress optional at the Diggle Hotel, Diggle.
20th April	12 noon	Diggle Barrel Roll, Canal & Craft Fair, Sam Road, Diggle.
22nd April		Coach trip to Ellesmere Port Museum, with traditional gathering of boats, Mikron Show, and museum visit. Details from Stuart Moreton on Hudds. 844105.
25th April	8 pm	'Beer & Chat' at the Royal Standard, St. Mary's Gate, Sheffield.
27th April	8 pm prompt	4th Annual General Meeting of the HCS Ltd., at the Coach & Horses, Standedge, Huddersfield.
3rd May	8 pm	Illustrated talk by John Gagg at the Zetland Hotel, Huddersfield.
5th/6th May		Huddersfield Canals Festival 1984 at Aspley Basin, Huddersfield.
9th May		Social Meeting at the Farrars Arms, Grasscroft, Oldham.

**WORKING PARTY DATES**

3/4th March  
 31st March/1st April  
 20th/23rd April — Easter Work Camp.

**EDITOR.** The editor holds the right to edit or withhold articles and letters or to retain them for publication at a later date.

© Huddersfield Canal Society Ltd 1984

**ARTICLES** may be reproduced in allied magazines without prior reference providing the source is acknowledged.  
 The Diggles © Huddersfield Canal Society Ltd 1984

